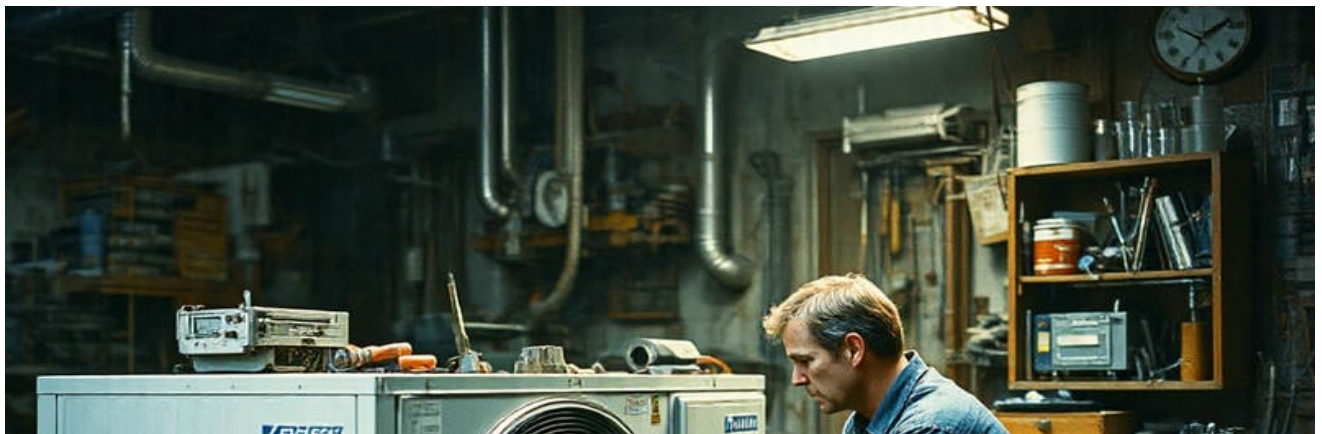




- **News**
- **Evaluating Different Financing Packages for Mobile Home HVAC**  
**Evaluating Different Financing Packages for Mobile Home HVAC** **Budgeting Monthly Payments for Mobile Home Heating Projects** **Reviewing Interest Options for Mobile Home AC Installations** **Setting Up Installment Plans for Mobile Home Furnace Upgrades** **Comparing Credit Requirements for Mobile Home HVAC Financing** **Investigating No Payment Period Deals for Mobile Home Cooling** **Combining Rebates with Financing for Mobile Home AC Purchases** **Checking Eligibility for Income Based Mobile Home HVAC Loans** **Aligning Payment Strategies with Seasonal Needs in Mobile Home Heating** **Exploring Collaboration with Utility Incentive Programs for Mobile Homes** **Scheduling Payments for Large Scale Mobile Home HVAC Replacements** **Simplifying Approval Steps for Mobile Home HVAC Financing**
- **Exploring Major Brands for Mobile Home Furnace Installations**  
**Exploring Major Brands for Mobile Home Furnace Installations** **Aligning System Specifications with Mobile Home AC Requirements** **Evaluating Carrier Options for Mobile Home Air Conditioning** **Navigating Trane Models for Mobile Home Heating** **Selecting Goodman Units for Reliable Mobile Home Climate Control** **Verifying Rheem Specifications in Mobile Home HVAC Retrofits** **Identifying Compatible Parts Across Multiple Mobile Home Brands** **Adapting Different Brand Coils and Compressors for Mobile Home Use** **Maintaining Uniform Performance with Mixed Brand Components** **Comparing Equipment Sizes to Mobile Home Square Footage** **Assessing Future Upgrade Paths for Mobile Home AC Brand Choices** **Checking Warranties Offered by Various Mobile Home HVAC Brands**
- **About Us**



# Combining Rebates with Financing for Mobile Home AC Purchases

Overview of HVAC needs specific to mobile homes

The increasing need for energy efficiency in mobile homes has made the importance of efficient air conditioning (AC) units more pronounced than ever before. Mobile homes, often characterized by their compact living spaces and unique construction materials, can present distinct challenges when it comes to maintaining comfortable indoor temperatures. As the climate continues to change and energy costs rise, ensuring that mobile home residents have access to effective and efficient cooling solutions is crucial.

Outdoor compressor units should be shielded from debris and weather exposure **mobile home hvac systems** wall.

Efficient AC units play a pivotal role in reducing energy consumption while ensuring comfort in mobile homes. These units are designed to operate with lower electricity demands, which not only helps reduce the overall energy bills for residents but also lessens the environmental impact associated with excessive energy use. By optimizing their performance, these systems can maintain desired temperature levels without overworking or wasting power.

One of the key strategies to make these high-efficiency AC units accessible to mobile home residents is by combining rebates with financing options. Rebates offered by utility companies or government programs serve as immediate financial incentives that lower the initial cost of purchasing an efficient AC system. This reduction in upfront expenses makes it easier for homeowners who might otherwise be deterred by high initial costs to invest in better technology.

Coupling these rebates with smart financing plans further enhances affordability. Financing allows residents to spread out payments over time instead of bearing a hefty one-time expense. This approach not only increases purchase feasibility but also aligns monthly costs

more closely with potential savings on electricity bills due to improved efficiency.

Moreover, such financial arrangements often come with attractive terms that take into account the projected savings from reduced energy usage. Lenders or program administrators frequently offer low-interest rates or flexible payment schedules tailored specifically for energy-efficient upgrades, making them especially appealing for fixed-income households commonly found within mobile home communities.

In addition to individual benefits, promoting efficient AC unit installations through rebates and financing has broader positive implications. It supports environmental sustainability efforts by curbing greenhouse gas emissions tied to excessive power production and consumption. Additionally, it stimulates economic activity through increased demand for modern HVAC technologies and installation services.

Overall, integrating rebates with financing solutions forms a comprehensive approach that addresses both financial barriers and promotes long-term benefits associated with efficient AC units in mobile homes. By prioritizing such initiatives, stakeholders can ensure that all individuals have equitable access to comfort while simultaneously advancing collective goals related to fiscal responsibility and ecological stewardship.

As we move forward into an era where sustainability is increasingly prioritized alongside quality of life improvements across all housing types-including mobile homes-embracing innovative approaches like this becomes essential not only for immediate relief but also enduring progress towards a more sustainable future.

# Importance of efficient heating and cooling solutions —

- Overview of HVAC needs specific to mobile homes
- Importance of efficient heating and cooling solutions
- Understanding Financing Options for Mobile Home HVAC
- Explanation of common financing packages available
- Key factors to consider when choosing a financing option
- Personal Loans for HVAC Systems
- Pros and cons of using personal loans for HVAC installation

When considering the investment in a mobile home air conditioning system, many homeowners are concerned not only with the upfront costs but also with maximizing their savings through available rebates and financing options. Understanding how to effectively combine these financial incentives can significantly reduce the overall expenditure and make an AC purchase more manageable.

Rebates are one of the most attractive incentives available for those purchasing new air conditioning units. These are typically offered by manufacturers, utility companies, or government programs aiming to promote energy efficiency and reduce environmental impact. For instance, local utility companies often provide rebates as part of their energy-saving initiatives. The amount can vary depending on the efficiency rating of the unit purchased, with higher rebates offered for models that demonstrate superior energy performance. Additionally, federal or state government programs may offer tax credits for energy-efficient appliance purchases, which further enhance potential savings.

To take full advantage of these rebates, it is essential first to research what's available in your area and understand the eligibility requirements. Most rebate programs require that you purchase a qualifying model from a participating retailer within a specified timeframe. Keeping track of deadlines and ensuring all necessary paperwork is submitted promptly will help avoid missing out on valuable savings.

Combining these rebates with financing options can further ease the financial burden associated with purchasing an air conditioning unit for your mobile home. Many retailers and manufacturers offer special financing deals such as zero-interest loans or extended payment plans that allow you to spread out payments over time without incurring additional interest costs. This approach can be particularly beneficial when paired with rebates since it reduces both immediate financial outlay and long-term cost burdens.

Moreover, some lenders offer green or energy-efficient loans specifically designed to encourage environmentally friendly home improvements like installing an efficient AC system in mobile homes. These loans often come with favorable terms compared to traditional financing options because they align with broader sustainability goals.

When planning your AC purchase, it's crucial to evaluate all available financing options alongside potential rebates. Begin by assessing your budgetary constraints and long-term financial goals; this will guide you in selecting a repayment plan that aligns best with your

circumstances while leveraging any possible reductions through rebates.

In conclusion, purchasing an air conditioning unit for your mobile home doesn't have to be financially daunting if approached strategically by combining available rebates and smart financing solutions. By diligently researching what incentives exist at both local and federal levels-and coupling them wisely with advantageous payment plans-you can minimize costs significantly while enjoying increased comfort within your living space. This careful orchestration not only benefits your wallet but also supports broader efforts towards enhanced environmental stewardship through reduced energy consumption.

## **Affordable Payment Plans for Upgrading Mobile Home AC Systems**

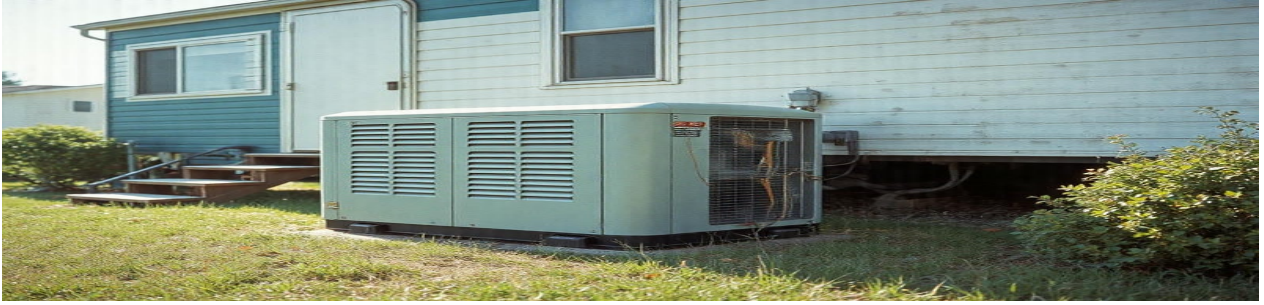


Choosing the right payment plan for upgrading your mobile home AC system is a crucial decision that can significantly impact your financial stability and comfort at home.. With numerous options available, it's essential to consider several factors to ensure you select a plan that aligns with your needs and budget. Firstly, assess your financial situation.

Posted by on 2024-12-30

## **Aligning Equipment Compatibility with Financing Options in Mobile Homes**





In the dynamic world of mobile homes, aligning equipment compatibility with financing options is a crucial element that can significantly impact the success of any project.. The process involves ensuring that the equipment used in mobile home construction or renovation is not only technically suitable but also financially feasible.

Posted by on 2024-12-30

## Benefits of Payment Plans Tailored for Mobile Home HVAC Upgrades



When contemplating upgrades to your mobile home's HVAC system, choosing the right payment plan is as crucial as selecting the equipment itself.. As energy efficiency and comfort become increasingly important, many homeowners are considering tailored payment plans that make these enhancements more accessible.

Posted by on 2024-12-30

# Understanding Financing Options for Mobile Home HVAC

In the pursuit of creating a comfortable and energy-efficient living environment, mobile home owners often face unique challenges when it comes to upgrading essential systems like air conditioning. The cost of purchasing and installing a new AC system can be daunting, but combining available rebates with flexible financing options presents a viable solution for many.

Mobile homes, renowned for their affordability and flexibility, require efficient climate control systems to ensure comfort throughout the year. Investing in a high-quality air conditioning unit not only promises enhanced comfort but also contributes to long-term savings through improved energy efficiency. However, the initial outlay for such an upgrade can be prohibitive for many homeowners. This is where the strategic combination of rebates and financing becomes invaluable.

Rebates are offered by various entities including manufacturers, utility companies, and government programs as incentives to encourage consumers to purchase energy-efficient appliances. These rebates help reduce the upfront cost of new AC units significantly. For mobile home owners looking to replace outdated or inefficient systems, tapping into these rebate programs can make a substantial financial difference.

Once potential rebates have been identified-be it from federal tax credits or local utility discounts-the next step is exploring financing options that align with one's budgetary constraints. Financing provides the flexibility to spread out payments over time rather than making one large up-front payment. Financial institutions often offer specialized loans tailored for home improvements, which could include favorable interest rates or terms specifically designed for energy-efficient upgrades.

The synergy between securing rebates and obtaining suitable financing cannot be overstated. By lowering the initial cost through rebates and spreading remaining expenses over manageable installments via financing, mobile home owners can undertake necessary upgrades without undue financial strain. Additionally, reduced monthly operating costs due to greater energy efficiency translate into savings that can offset installment payments over time.

Moreover, this approach has broader implications beyond individual financial benefit; by opting for more energy-efficient solutions supported by these combined strategies, homeowners contribute positively towards environmental conservation efforts-a crucial consideration in today's world.

In conclusion, as mobile home owners contemplate upgrading their air conditioning systems amidst rising temperatures and fluctuating climates, leveraging both rebate opportunities and flexible financing options emerges as an astute strategy. This dual approach not only mitigates immediate financial burdens but also promotes long-term savings while aligning with sustainable living practices-an outcome beneficial for individuals and communities alike.





# Explanation of common financing packages available

Combining rebates with financing when purchasing air conditioning units for mobile homes can offer significant advantages to homeowners. This dual approach not only helps reduce immediate costs but also makes the long-term investment more manageable and financially beneficial. By exploring the benefits of this strategy, we can better understand its appeal and

practicality for consumers looking to enhance their living conditions without straining their budgets.

One of the most compelling benefits of combining rebates with financing is the immediate reduction in out-of-pocket expenses. Rebates, often provided by manufacturers or government energy efficiency programs, lower the initial purchase price of an AC unit. These incentives encourage homeowners to invest in higher-efficiency models that might otherwise be financially out of reach. By lowering upfront costs, rebates make it easier for consumers to choose better-performing units, which can lead to significant savings on energy bills over time.

In addition to rebates, financing options further alleviate financial pressure by spreading payments over a manageable period. This arrangement allows homeowners to acquire necessary upgrades without waiting until they have saved enough capital. Financing options can include low or zero-interest loans specifically designed for energy-efficient home improvements. When combined with rebates, these financing solutions make upgrading AC systems more accessible and less daunting, especially for those who may not have substantial liquid assets readily available.

Another advantage is that this combination promotes energy efficiency, which has long-term economic and environmental benefits. Energy-efficient AC units consume less power while providing the same level of comfort as older models. This means that even after accounting for the cost of financing, homeowners often experience reduced utility bills due to lower energy consumption. Over time, these savings can offset both the initial purchase price and any interest accrued from financing arrangements.

Moreover, integrating rebates with financing supports broader sustainable living goals by encouraging consumers to opt for environmentally friendly products. As more people take advantage of these combined offerings, there is a collective move towards reducing overall carbon footprints associated with residential cooling needs. The environmental impact becomes a shared responsibility between individuals and institutions offering these incentives.

Finally, this strategy provides flexibility and peace of mind for mobile home owners who might otherwise feel constrained by budget limitations or hesitant about making large purchases upfront. It offers them a viable pathway to improve their homes' comfort and efficiency standards without compromising financial stability.

In conclusion, combining rebates with financing presents an attractive option for those looking to purchase air conditioning systems for mobile homes. It reduces immediate costs through direct discounts while easing financial burdens through structured payment plans-ultimately leading to greater energy efficiency and sustainability at a personal level as well as within wider communities. For homeowners eager to upgrade their living spaces affordably and responsibly, this approach represents both a smart economic decision and a commitment to future-proofing their lifestyles against rising energy demands and environmental concerns.

## Key factors to consider when choosing a financing option

Purchasing a mobile home air conditioning (AC) unit is a significant investment that can greatly improve comfort and quality of life, especially in warmer climates. However, the cost of such units can be daunting for many homeowners. Fortunately, there are financial strategies available that can make this process more affordable and accessible. Combining rebates with financing options is one such strategy that can significantly reduce costs and ease the financial burden.

The first step in this process is to conduct thorough research on available rebates. Many utility companies, manufacturers, and government programs offer rebates for purchasing energy-efficient AC units. These rebates not only encourage environmentally friendly practices but also provide substantial savings to consumers. To find applicable rebates, homeowners should start by checking with their local utility company. Often, they will list current promotions or incentives on their website or through customer service channels.

Once potential rebates have been identified, it's crucial to understand the eligibility requirements and application deadlines associated with each one. This may involve purchasing specific models of AC units or having them installed by certified professionals. Keeping detailed records of purchase receipts and installation documents will be necessary when applying for these rebates.

Simultaneously exploring financing options is the next vital step in making an AC purchase more manageable. Retailers often partner with financial institutions to offer attractive financing deals to customers buying high-ticket items like AC units. These deals might include zero-interest loans if paid off within a certain period or low monthly payments spread over several years.

Homeowners should also consider personal loans from banks or credit unions as another viable financing avenue. Before settling on any loan product, it's important to compare interest rates, terms, and conditions from multiple lenders to ensure that you're getting the best deal possible.

After identifying both potential rebates and suitable financing options, it's time to coordinate these two elements effectively. Begin by securing pre-approval for any necessary loans; this will provide clarity on your budget limitations when selecting an AC unit eligible for rebate programs.

When ready to make a purchase, confirm that the chosen unit qualifies for all applicable rebates before finalizing any transactions-this ensures no surprises after purchase regarding eligibility criteria being unmet.

Finally-and perhaps most importantly-complete all required paperwork promptly after installation: submit rebate applications along with supporting documentation while adhering strictly to deadlines imposed by rebate providers so as not miss out due benefit opportunities!

In conclusion combining rebates with strategic financing plans offers smart way alleviate cost pressures associated buying mobile home AC systems without compromising quality choice! By following outlined steps conducting diligent research into both realms securing necessary approvals submitting timely applications individuals stand position enjoy comfortable living spaces reduced financial strain simultaneously contributing towards greater environmental sustainability through energy-efficient technology adoption .





# Personal Loans for HVAC Systems

Combining rebates with financing for mobile home air conditioning (AC) purchases presents an innovative strategy to make these systems more affordable and accessible. However, as with any financial arrangement, this approach is not without its potential challenges. By identifying and addressing these challenges, consumers can maximize their benefits and ensure a smoother purchasing experience.

One of the primary challenges is navigating the complexity of rebate programs. Rebates often come with specific eligibility requirements, application processes, and deadlines that can overwhelm potential buyers. Consumers may struggle to understand which rebates they qualify for or how to apply them effectively towards their purchase. To overcome this challenge, it is crucial to conduct thorough research before making a purchase. Buyers should consult with manufacturers or authorized dealers who are familiar with available rebate programs and can provide guidance on how to meet the necessary criteria. Additionally, leveraging online resources or contacting local utility companies can offer further insights into available rebates.

Another significant challenge lies in managing the financing aspect of the purchase. Financing options vary widely in terms of interest rates, repayment periods, and terms and conditions. Consumers may find it difficult to assess which financing package best suits their financial situation and future plans. To address this issue, prospective buyers should first evaluate their budget and credit score to understand what financing options are realistically available to them. It's advisable to shop around for multiple offers from different lenders or financial institutions before committing to one option.

Furthermore, combining rebates with financing requires careful coordination between different entities-manufacturers offering rebates, financial institutions providing loans, and retailers selling AC units. Miscommunication or delays in one part of this process could lead to complications that negate potential savings from either the rebate or favorable loan terms. To mitigate such risks, consumers should maintain clear communication channels with all parties involved throughout the transaction process.

Lastly, there is a risk that individuals might prioritize immediate savings over long-term efficiency gains when selecting an AC unit under these arrangements. While initial cost reductions via rebates and affordable financing are attractive, it's vital not to overlook the importance of energy efficiency ratings that impact future utility costs significantly.

In conclusion, while combining rebates with financing offers an appealing pathway toward affordability for mobile home AC purchases, understanding its intricacies is essential for maximizing benefits effectively without incurring unforeseen obstacles along the way-



researching thoroughly beforehand will help alleviate many potential pitfalls related both directly (complexity) & indirectly (long-term efficiency).

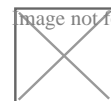
## About Sick building syndrome



**This article may have misleading content.** Please help clarify the content. (November 2022)




This article **needs more reliable medical references for verification or relies too heavily on primary sources.** Please review the contents of the article and add the appropriate references if you can. Unsourced or poorly sourced material may be challenged and removed. *Find sources:* "Sick building syndrome" – news · newspapers · books · scholar · JSTOR (November 2022)



**This article has multiple issues.** Please help **improve it** or discuss these issues on the **talk page**. (*Learn how and when to remove these messages*)

(*Learn how and when to remove this message*)

### Sick building syndrome

**Specialty** Environmental medicine, immunology  [Edit this on Wikidata](#)

**Sick building syndrome (SBS)** is a condition in which people develop symptoms of illness or become infected with chronic disease from the building in which they work or reside.<sup>[1]</sup> In scientific literature, SBS is also known as **building-related illness (BRI)**, **building-related symptoms (BRS)**, or **idiopathic environmental intolerance (IEI)**.

The main identifying observation is an increased incidence of complaints of such symptoms as headache, eye, nose, and throat irritation, fatigue, dizziness, and nausea. The 1989 Oxford English Dictionary defines SBS in that way.<sup>[2]</sup> The World Health Organization created a 484-page tome on indoor air quality 1984, when SBS was attributed only to non-organic causes, and suggested that the book might form a basis for legislation or litigation.<sup>[3]</sup>

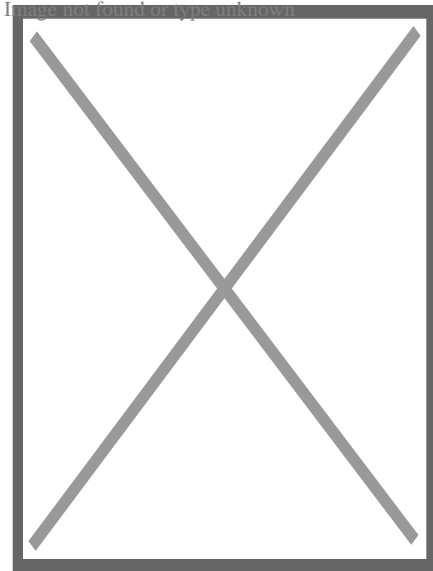
The outbreaks may or may not be a direct result of inadequate or inappropriate cleaning.<sup>[2]</sup> SBS has also been used to describe staff concerns in post-war buildings with faulty building aerodynamics, construction materials, construction process, and maintenance.<sup>[2]</sup> Some symptoms tend to increase in severity with the time people spend in the building, often improving or even disappearing when people are away from the building.<sup>[2][4]</sup> The term *SBS* is also used interchangeably with "**building-related symptoms**", which orients the name of the condition around patients' symptoms rather than a "sick" building.<sup>[5]</sup>

Attempts have been made to connect sick building syndrome to various causes, such as contaminants produced by outgassing of some building materials, volatile organic compounds (VOC), improper exhaust ventilation of ozone (produced by the operation of

some office machines), light industrial chemicals used within, and insufficient fresh-air intake or air filtration (see "Minimum efficiency reporting value").<sup>[2]</sup> Sick building syndrome has also been attributed to heating, ventilation, and air conditioning (HVAC) systems, an attribution about which there are inconsistent findings.<sup>[6]</sup>

## Signs and symptoms

[edit]



An air quality monitor

Human exposure to aerosols has a variety of adverse health effects.<sup>[7]</sup> Building occupants complain of symptoms such as sensory irritation of the eyes, nose, or throat; neurotoxic or general health problems; skin irritation; nonspecific hypersensitivity reactions; infectious diseases;<sup>[8]</sup> and odor and taste sensations.<sup>[9]</sup> Poor lighting has caused general malaise.<sup>[10]</sup>

Extrinsic allergic alveolitis has been associated with the presence of fungi and bacteria in the moist air of residential houses and commercial offices.<sup>[11]</sup> A study in 2017 correlated several inflammatory diseases of the respiratory tract with objective evidence of damp-caused damage in homes.<sup>[12]</sup>

The WHO has classified the reported symptoms into broad categories, including mucous-membrane irritation (eye, nose, and throat irritation), neurotoxic effects (headaches, fatigue, and irritability), asthma and asthma-like symptoms (chest tightness and wheezing), skin dryness and irritation, and gastrointestinal complaints.<sup>[13]</sup>

Several sick occupants may report individual symptoms that do not seem connected. The key to discovery is the increased incidence of illnesses in general with onset or exacerbation in a short period, usually weeks. In most cases, SBS symptoms are relieved soon after the occupants leave the particular room or zone.<sup>[14]</sup> However, there can be

lingering effects of various neurotoxins, which may not clear up when the occupant leaves the building. In some cases, including those of sensitive people, there are long-term health effects.[<sup>15</sup>]

## Cause

[edit]

ASHRAE has recognized that polluted urban air, designated within the United States Environmental Protection Agency (EPA)'s air quality ratings as unacceptable, requires the installation of treatment such as filtration for which the HVAC practitioners generally apply carbon-impregnated filters and their likes. Different toxins will aggravate the human body in different ways. Some people are more allergic to mold, while others are highly sensitive to dust. Inadequate ventilation will exaggerate small problems (such as deteriorating fiberglass insulation or cooking fumes) into a much more serious indoor air quality problem.[<sup>10</sup>]

Common products such as paint, insulation, rigid foam, particle board, plywood, duct liners, exhaust fumes and other chemical contaminants from indoor or outdoor sources, and biological contaminants can be trapped inside by the HVAC AC system. As this air is recycled using fan coils the overall oxygenation ratio drops and becomes harmful. When combined with other stress factors such as traffic noise and poor lighting, inhabitants of buildings located in a polluted urban area can quickly become ill as their immune system is overwhelmed.[<sup>10</sup>]

Certain VOCs, considered toxic chemical contaminants to humans, are used as adhesives in many common building construction products. These aromatic carbon rings / VOCs can cause acute and chronic health effects in the occupants of a building, including cancer, paralysis, lung failure, and others. Bacterial spores, fungal spores, mold spores, pollen, and viruses are types of biological contaminants and can all cause allergic reactions or illness described as SBS. In addition, pollution from outdoors, such as motor vehicle exhaust, can enter buildings, worsen indoor air quality, and increase the indoor concentration of carbon monoxide and carbon dioxide.[<sup>16</sup>] Adult SBS symptoms were associated with a history of allergic rhinitis, eczema and asthma.[<sup>17</sup>]

A 2015 study concerning the association of SBS and indoor air pollutants in office buildings in Iran found that, as carbon dioxide increased in a building, nausea, headaches, nasal irritation, dyspnea, and throat dryness also rose.[<sup>10</sup>] Some work conditions have been correlated with specific symptoms: brighter light, for example was significantly related to skin dryness, eye pain, and malaise.[<sup>10</sup>] Higher temperature is correlated with sneezing, skin redness, itchy eyes, and headache; lower relative humidity has been associated with sneezing, skin redness, and eye pain.[<sup>10</sup>]

In 1973, in response to the oil crisis and conservation concerns, ASHRAE Standards 62-73 and 62-81 reduced required ventilation from 10 cubic feet per minute (4.7 L/s) per

person to 5 cubic feet per minute (2.4 L/s) per person, but this was found to be a contributing factor to sick building syndrome.<sup>[18]</sup> As of the 2016 revision, ASHRAE ventilation standards call for 5 to 10 cubic feet per minute of ventilation per occupant (depending on the occupancy type) in addition to ventilation based on the zone floor area delivered to the breathing zone.<sup>[19]</sup>

## Workplace

[edit]

Excessive work stress or dissatisfaction, poor interpersonal relationships and poor communication are often seen to be associated with SBS, recent<sup>[when?]</sup> studies show that a combination of environmental sensitivity and stress can greatly contribute to sick building syndrome.<sup>[15]</sup><sup>[citation needed]</sup>

Greater effects were found with features of the psycho-social work environment including high job demands and low support. The report concluded that the physical environment of office buildings appears to be less important than features of the psycho-social work environment in explaining differences in the prevalence of symptoms. However, there is still a relationship between sick building syndrome and symptoms of workers regardless of workplace stress.<sup>[20]</sup>

Specific work-related stressors are related with specific SBS symptoms. Workload and work conflict are significantly associated with general symptoms (headache, abnormal tiredness, sensation of cold or nausea). While crowded workspaces and low work satisfaction are associated with upper respiratory symptoms.<sup>[21]</sup> Work productivity has been associated with ventilation rates, a contributing factor to SBS, and there's a significant increase in production as ventilation rates increase, by 1.7% for every two-fold increase of ventilation rate.<sup>[22]</sup> Printer effluent, released into the office air as ultra-fine particles (UFPs) as toner is burned during the printing process, may lead to certain SBS symptoms.<sup>[23]</sup><sup>[24]</sup> Printer effluent may contain a variety of toxins to which a subset of office workers are sensitive, triggering SBS symptoms.<sup>[25]</sup>

Specific careers are also associated with specific SBS symptoms. Transport, communication, healthcare, and social workers have highest prevalence of general symptoms. Skin symptoms such as eczema, itching, and rashes on hands and face are associated with technical work. Forestry, agriculture, and sales workers have the lowest rates of sick building syndrome symptoms.<sup>[26]</sup>

From the assessment done by Fisk and Mudarri, 21% of asthma cases in the United States were caused by wet environments with mold that exist in all indoor environments, such as schools, office buildings, houses and apartments. Fisk and Berkeley Laboratory colleagues also found that the exposure to the mold increases the chances of respiratory

issues by 30 to 50 percent.<sup>[27]</sup> Additionally, studies showing that health effects with dampness and mold in indoor environments found that increased risk of adverse health effects occurs with dampness or visible mold environments.<sup>[28]</sup>

Milton et al. determined the cost of sick leave specific for one business was an estimated \$480 per employee, and about five days of sick leave per year could be attributed to low ventilation rates. When comparing low ventilation rate areas of the building to higher ventilation rate areas, the relative risk of short-term sick leave was 1.53 times greater in the low ventilation areas.<sup>[29]</sup>

## Home

[edit]

Sick building syndrome can be caused by one's home. Laminate flooring may release more SBS-causing chemicals than do stone, tile, and concrete floors.<sup>[17]</sup> Recent redecorating and new furnishings within the last year are associated with increased symptoms; so are dampness and related factors, having pets, and cockroaches.<sup>[17]</sup> Mosquitoes are related to more symptoms, but it is unclear whether the immediate cause of the symptoms is the mosquitoes or the repellents used against them.<sup>[17]</sup>

## Mold

[edit]

Main article: Mold health issues

Sick building syndrome may be associated with indoor mold or mycotoxin contamination. However, the attribution of sick building syndrome to mold is controversial and supported by little evidence.<sup>[30]</sup><sup>[31]</sup><sup>[32]</sup>

## Indoor temperature

[edit]

Main article: Room temperature § Health effects

Indoor temperature under 18 °C (64 °F) has been shown to be associated with increased respiratory and cardiovascular diseases, increased blood levels, and increased hospitalization.<sup>[33]</sup>

## Diagnosis

[edit]

While sick building syndrome (SBS) encompasses a multitude of non-specific symptoms, building-related illness (BRI) comprises specific, diagnosable symptoms caused by certain agents (chemicals, bacteria, fungi, etc.). These can typically be identified, measured, and quantified.<sup>[34]</sup> There are usually four causal agents in BRI: immunologic, infectious, toxic, and irritant.<sup>[34]</sup> For instance, Legionnaire's disease, usually caused by *Legionella pneumophila*, involves a specific organism which could be ascertained through clinical findings as the source of contamination within a building.<sup>[34]</sup>

## Prevention

[edit]

- Reduction of time spent in the building
- If living in the building, moving to a new place
- Fixing any deteriorated paint or concrete deterioration
- Regular inspections to indicate for presence of mold or other toxins
- Adequate maintenance of all building mechanical systems
- Toxin-absorbing plants, such as sansevieria<sup>[35][36][37][38][39][40][41]</sup><sup>[excessive citations]</sup>
- Roof shingle non-pressure cleaning for removal of algae, mold, and *Gloeocapsa magma*
- Using ozone to eliminate the many sources, such as VOCs, molds, mildews, bacteria, viruses, and even odors. However, numerous studies identify high-ozone shock treatment as ineffective despite commercial popularity and popular belief.
- Replacement of water-stained ceiling tiles and carpeting
- Only using paints, adhesives, solvents, and pesticides in well-ventilated areas or only using these pollutant sources during periods of non-occupancy
- Increasing the number of air exchanges; the American Society of Heating, Refrigeration and Air-Conditioning Engineers recommend a minimum of 8.4 air exchanges per 24-hour period
- Increased ventilation rates that are above the minimum guidelines<sup>[22]</sup>
- Proper and frequent maintenance of HVAC systems
- UV-C light in the HVAC plenum
- Installation of HVAC air cleaning systems or devices to remove VOCs and bioeffluents (people odors)
- Central vacuums that completely remove all particles from the house including the ultrafine particles (UFPs) which are less than 0.1 μm
- Regular vacuuming with a HEPA filter vacuum cleaner to collect and retain 99.97% of particles down to and including 0.3 micrometers
- Placing bedding in sunshine, which is related to a study done in a high-humidity area where damp bedding was common and associated with SBS<sup>[17]</sup>
- Lighting in the workplace should be designed to give individuals control, and be natural when possible<sup>[42]</sup>



- Relocating office printers outside the air conditioning boundary, perhaps to another building
- Replacing current office printers with lower emission rate printers<sup>[43]</sup>
- Identification and removal of products containing harmful ingredients

## Management

[edit]

SBS, as a non-specific blanket term, does not have any specific cause or cure. Any known cure would be associated with the specific eventual disease that was caused by exposure to known contaminants. In all cases, alleviation consists of removing the affected person from the building associated. BRI, on the other hand, utilizes treatment appropriate for the contaminant identified within the building (e.g., antibiotics for Legionnaire's disease).<sup>[citation needed]</sup>

Improving the indoor air quality (IAQ) of a particular building can attenuate, or even eliminate, the continued exposure to toxins. However, a Cochrane review of 12 mold and dampness remediation studies in private homes, workplaces and schools by two independent authors were deemed to be very low to moderate quality of evidence in reducing adult asthma symptoms and results were inconsistent among children.<sup>[44]</sup> For the individual, the recovery may be a process involved with targeting the acute symptoms of a specific illness, as in the case of mold toxins.<sup>[45]</sup> Treating various building-related illnesses is vital to the overall understanding of SBS. Careful analysis by certified building professionals and physicians can help to identify the exact cause of the BRI, and help to illustrate a causal path to infection. With this knowledge one can, theoretically, remediate a building of contaminants and rebuild the structure with new materials. Office BRI may more likely than not be explained by three events: "Wide range in the threshold of response in any population (susceptibility), a spectrum of response to any given agent, or variability in exposure within large office buildings."<sup>[46]</sup>

Isolating any one of the three aspects of office BRI can be a great challenge, which is why those who find themselves with BRI should take three steps, history, examinations, and interventions. History describes the action of continually monitoring and recording the health of workers experiencing BRI, as well as obtaining records of previous building alterations or related activity. Examinations go hand in hand with monitoring employee health. This step is done by physically examining the entire workspace and evaluating possible threats to health status among employees. Interventions follow accordingly based on the results of the Examination and History report.<sup>[46]</sup>

## Epidemiology

[edit]

Some studies have found that women have higher reports of SBS symptoms than men.<sup>[17]</sup> <sup>[10]</sup> It is not entirely clear, however, if this is due to biological, social, or occupational

factors.

A 2001 study published in the *Journal Indoor Air*, gathered 1464 office-working participants to increase the scientific understanding of gender differences under the Sick Building Syndrome phenomenon.<sup>[47]</sup> Using questionnaires, ergonomic investigations, building evaluations, as well as physical, biological, and chemical variables, the investigators obtained results that compare with past studies of SBS and gender. The study team found that across most test variables, prevalence rates were different in most areas, but there was also a deep stratification of working conditions between genders as well. For example, men's workplaces tend to be significantly larger and have all-around better job characteristics. Secondly, there was a noticeable difference in reporting rates, specifically that women have higher rates of reporting roughly 20% higher than men. This information was similar to that found in previous studies, thus indicating a potential difference in willingness to report.<sup>[47]</sup>

There might be a gender difference in reporting rates of sick building syndrome, because women tend to report more symptoms than men do. Along with this, some studies have found that women have a more responsive immune system and are more prone to mucosal dryness and facial erythema. Also, women are alleged by some to be more exposed to indoor environmental factors because they have a greater tendency to have clerical jobs, wherein they are exposed to unique office equipment and materials (example: blueprint machines, toner-based printers), whereas men often have jobs based outside of offices.<sup>[48]</sup>

## History

[edit]



This section **possibly contains original research**. Please improve it by verifying the claims made and adding inline citations. Statements consisting only of original research should be removed. *(August 2017) (Learn how and when to remove this message)*

In the late 1970s, it was noted that nonspecific symptoms were reported by tenants in newly constructed homes, offices, and nurseries. In media it was called "office illness". The term "sick building syndrome" was coined by the WHO in 1986, when they also estimated that 10–30% of newly built office buildings in the West had indoor air problems. Early Danish and British studies reported symptoms.

Poor indoor environments attracted attention. The Swedish allergy study (SOU 1989:76) designated "sick building" as a cause of the allergy epidemic as was feared. In the 1990s, therefore, extensive research into "sick building" was carried out. Various physical and chemical factors in the buildings were examined on a broad front.

The problem was highlighted increasingly in media and was described as a "ticking time bomb". Many studies were performed in individual buildings.

In the 1990s "sick buildings" were contrasted against "healthy buildings". The chemical contents of building materials were highlighted. Many building material manufacturers were actively working to gain control of the chemical content and to replace criticized additives. The ventilation industry advocated above all more well-functioning ventilation. Others perceived ecological construction, natural materials, and simple techniques as a solution.

At the end of the 1990s came an increased distrust of the concept of "sick building". A dissertation at the Karolinska Institute in Stockholm 1999 questioned the methodology of previous research, and a Danish study from 2005 showed these flaws experimentally. It was suggested that sick building syndrome was not really a coherent syndrome and was not a disease to be individually diagnosed, but a collection of as many as a dozen semi-related diseases. In 2006 the Swedish National Board of Health and Welfare recommended in the medical journal *Läkartidningen* that "sick building syndrome" should not be used as a clinical diagnosis. Thereafter, it has become increasingly less common to use terms such as *sick buildings* and *sick building syndrome* in research. However, the concept remains alive in popular culture and is used to designate the set of symptoms related to poor home or work environment engineering. *Sick building* is therefore an expression used especially in the context of workplace health.

Sick building syndrome made a rapid journey from media to courtroom where professional engineers and architects became named defendants and were represented by their respective professional practice insurers. Proceedings invariably relied on expert witnesses, medical and technical experts along with building managers, contractors and manufacturers of finishes and furnishings, testifying as to cause and effect. Most of these actions resulted in sealed settlement agreements, none of these being dramatic. The insurers needed a defense based upon Standards of Professional Practice to meet a court decision that declared that in a modern, essentially sealed building, the HVAC systems must produce breathing air for suitable human consumption. ASHRAE (American Society of Heating, Refrigeration and Air Conditioning Engineers, currently with over 50,000 international members) undertook the task of codifying its indoor air quality (IAQ) standard.

ASHRAE empirical research determined that "acceptability" was a function of outdoor (fresh air) ventilation rate and used carbon dioxide as an accurate measurement of occupant presence and activity. Building odors and contaminants would be suitably controlled by this dilution methodology. ASHRAE codified a level of 1,000 ppm of carbon dioxide and specified the use of widely available sense-and-control equipment to assure compliance. The 1989 issue of ASHRAE 62.1-1989 published the whys and wherefores and overrode the 1981 requirements that were aimed at a ventilation level of 5,000 ppm of carbon dioxide (the OSHA workplace limit), federally set to minimize HVAC system energy consumption. This apparently ended the SBS epidemic.

Over time, building materials changed with respect to emissions potential. Smoking vanished and dramatic improvements in ambient air quality, coupled with code compliant ventilation and maintenance, per ASHRAE standards have all contributed to the

acceptability of the indoor air environment.[<sup>49</sup>][<sup>50</sup>]

## See also

[edit]

- Aerotoxic syndrome
- Air purifier
- Asthmagen
- Cleanroom
- Electromagnetic hypersensitivity
- Havana syndrome
- Healthy building
- Indoor air quality
- Lead paint
- Multiple chemical sensitivity
- NASA Clean Air Study
- Nosocomial infection
- Particulates
- Power tools
- Renovation
- Somatization disorder
- Fan death

## References

[edit]

1. ^ "Sick Building Syndrome" (PDF). World Health Organization. n.d.
2. ^ **a b c d e** Passarelli, Giuseppe Ryan (2009). "Sick building syndrome: An overview to raise awareness". *Journal of Building Appraisal*. **5**: 55–66. doi:10.1057/jba.2009.20 .
3. ^ European Centre for Environment and Health, WHO (1983). *WHO guidelines for indoor air quality: selected pollutants (PDF)*. EURO Reports and Studies, no 78. Bonn Germany Office: WHO Regional Office for Europe (Copenhagen).
4. ^ Stolwijk, J A (1991-11-01). "Sick-building syndrome". *Environmental Health Perspectives*. **95**: 99–100. doi:10.1289/ehp.919599. ISSN 0091-6765. PMC 1568418 . PMID 1821387.
5. ^ *Indoor Air Pollution: An Introduction for Health Professionals (PDF)*. Indoor Air Division (6609J): U.S. Environmental Protection Agency. c. 2015.cite book: CS1 maint: location (link)
6. ^ Shahzad, Sally S.; Brennan, John; Theodossopoulos, Dimitris; Hughes, Ben; Calautit, John Kaiser (2016-04-06). "Building-Related Symptoms, Energy, and Thermal Control in the Workplace: Personal and Open Plan Offices". *Sustainability*. **8** (4): 331. doi:10.3390/su8040331. hdl:20.500.11820/03eb7043-814e-437d-b920-4a38bb88742c.

7. ^ Sundell, J; Lindval, T; Berndt, S (1994). "Association between type of ventilation and airflow rates in office buildings and the risk of SBS-symptoms among occupants". *Environ. Int.* **20** (2): 239–251. Bibcode:1994EnInt..20..239S. doi:10.1016/0160-4120(94)90141-4.
8. ^ Rylander, R (1997). "Investigation of the relationship between disease and airborne (1P3)-b-D-glucan in buildings". *Med. Of Inflamm.* **6** (4): 275–277. doi:10.1080/09629359791613. PMC 2365865. PMID 18472858.
9. ^ Godish, Thad (2001). *Indoor Environmental Quality*. New York: CRC Press. pp. 196–197. ISBN 1-56670-402-2
10. ^ **a b c d e f g** Jafari, Mohammad Javad; Khajevandi, Ali Asghar; Mousavi Najarkola, Seyed Ali; Yekaninejad, Mir Saeed; Pourhoseingholi, Mohammad Amin; Omidi, Leila; Kalantary, Saba (2015-01-01). "Association of Sick Building Syndrome with Indoor Air Parameters". *Tanaffos.* **14** (1): 55–62. ISSN 1735-0344. PMC 4515331. PMID 26221153.
11. ^ Teculescu, D. B. (1998). "Sick Building Symptoms in office workers in northern France: a pilot study". *Int. Arch. Occup. Environ. Health.* **71** (5): 353–356. doi:10.1007/s004200050292. PMID 9749975. S2CID 25095874.
12. ^ Pind C. Ahlroth (2017). "Patient-reported signs of dampness at home may be a risk factor for chronic rhinosinusitis: A cross-sectional study". *Clinical & Experimental Allergy.* **47** (11): 1383–1389. doi:10.1111/cea.12976. PMID 28695715. S2CID 40807627.
13. ^ Apter, A (1994). "Epidemiology of the sick building syndrome". *J. Allergy Clin. Immunol.* **94** (2): 277–288. doi:10.1053/ai.1994.v94.a56006. PMID 8077580.
14. ^ "Sick Building Syndrome". NSC.org. National Safety Council. 2009. Retrieved April 27, 2009.
15. ^ **a b** Joshi, Sumedha M. (August 2008). "The sick building syndrome". *Indian Journal of Occupational and Environmental Medicine.* **12** (2): 61–64. doi:10.4103/0019-5278.43262. ISSN 0973-2284. PMC 2796751. PMID 20040980.
16. ^ "Indoor Air Facts No.4: Sick Building Syndrome" (PDF). United States Environmental Protection Agency (EPA). 1991. Retrieved 2009-02-19.
17. ^ **a b c d e f** Wang, Juan; Li, BaiZhan; Yang, Qin; Wang, Han; Norback, Dan; Sundell, Jan (2013-12-01). "Sick building syndrome among parents of preschool children in relation to home environment in Chongqing, China". *Chinese Science Bulletin.* **58** (34): 4267–4276. Bibcode:2013ChSBu..58.4267W. doi:10.1007/s11434-013-5814-2. ISSN 1001-6538.
18. ^ Joshi S. M. (2008). "The sick building syndrome". *Indian J. Occup. Environ. Med.* **12** (2): 61–4. doi:10.4103/0019-5278.43262. PMC 2796751. PMID 20040980. in section 3 "Inadequate ventilation".
19. ^ ANSI/ASHRAE Standard 62.1-2016.
20. ^ Bauer R. M., Greve K. W., Besch E. L., Schramke C. J., Crouch J., Hicks A., Lyles W. B. (1992). "The role of psychological factors in the report of building-related symptoms in sick building syndrome". *Journal of Consulting and Clinical Psychology.* **60** (2): 213–219. doi:10.1037/0022-006x.60.2.213. PMID 1592950.cite journal: CS1 maint: multiple names: authors list (link)

21. ^ Azuma K., Ikeda K., Kagi N., Yanagi U., Osawa H. (2014). "Prevalence and risk factors associated with nonspecific building-related symptoms in office employees in Japan: Relationships between work environment, Indoor Air Quality, and occupational stress". *Indoor Air*. **25** (5): 499–511. doi:10.1111/ina.12158. PMID 25244340.cite journal: CS1 maint: multiple names: authors list (link)
22. ^ a b Wargocki P., Wyon D. P., Sundell J., Clausen G., Fanger P. O. (2000). "The Effects of Outdoor Air Supply Rate in an Office on Perceived Air Quality, Sick Building Syndrome (SBS) Symptoms and Productivity". *Indoor Air*. **10** (4): 222–236. Bibcode:2000InAir..10..222W. doi:10.1034/j.1600-0668.2000.010004222.x. PMID 11089327.cite journal: CS1 maint: multiple names: authors list (link)
23. ^ Morimoto, Yasuo; Ogami, Akira; Kochi, Isamu; Uchiyama, Tetsuro; Ide, Reiko; Myojo, Toshihiko; Higashi, Toshiaki (2010). "[Continuing investigation of effect of toner and its by-product on human health and occupational health management of toner]". *Sangyo Eiseigaku Zasshi = Journal of Occupational Health*. **52** (5): 201–208. doi:10.1539/sangyoeisei.a10002. ISSN 1349-533X. PMID 20595787.
24. ^ Pirela, Sandra Vanessa; Martin, John; Bello, Dhimiter; Demokritou, Philip (September 2017). "Nanoparticle exposures from nano-enabled toner-based printing equipment and human health: state of science and future research needs". *Critical Reviews in Toxicology*. **47** (8): 678–704. doi:10.1080/10408444.2017.1318354. ISSN 1547-6898. PMC 5857386. PMID 28524743.
25. ^ McKone, Thomas, et al. "Indoor Pollutant Emissions from Electronic Office Equipment, California Air Resources Board Air Pollution Seminar Series". Presented January 7, 2009. <https://www.arb.ca.gov/research/seminars/mckone/mckone.pdf> Archived 2017-02-07 at the Wayback Machine
26. ^ Norback D., Edling C. (1991). "Environmental, occupational, and personal factors related to the prevalence of sick building syndrome in the general population". *Occupational and Environmental Medicine*. **48** (7): 451–462. doi:10.1136/oem.48.7.451. PMC 1035398. PMID 1854648.
27. ^ Weinhold, Bob (2007-06-01). "A Spreading Concern: Inhalational Health Effects of Mold". *Environmental Health Perspectives*. **115** (6): A300–A305. doi:10.1289/ehp.115-a300. PMC 1892134. PMID 17589582.
28. ^ Mudarri, D.; Fisk, W. J. (June 2007). "Public health and economic impact of dampness and mold". *Indoor Air*. **17** (3): 226–235. Bibcode:2007InAir..17..226M. doi:10.1111/j.1600-0668.2007.00474.x. ISSN 0905-6947. PMID 17542835. S2CID 21709547.
29. ^ Milton D. K., Glencross P. M., Walters M. D. (2000). "Risk of Sick Leave Associated with Outdoor Air Supply Rate, Humidification, and Occupant Complaints". *Indoor Air*. **10** (4): 212–221. Bibcode:2000InAir..10..212M. doi:10.1034/j.1600-0668.2000.010004212.x. PMID 11089326.cite journal: CS1 maint: multiple names: authors list (link)
30. ^ Straus, David C. (2009). "Molds, mycotoxins, and sick building syndrome". *Toxicology and Industrial Health*. **25** (9–10): 617–635. Bibcode:2009ToxIH..25..617S. doi:10.1177/0748233709348287. PMID 19854820. S2CID 30720328.
31. ^ Terr, Abba I. (2009). "Sick Building Syndrome: Is mould the cause?". *Medical Mycology*. **47**: S217–S222. doi:10.1080/13693780802510216. PMID 19255924.



32. ^ Norbäck, Dan; Zock, Jan-Paul; Plana, Estel; Heinrich, Joachim; Svanes, Cecilie; Sunyer, Jordi; Künzli, Nino; Villani, Simona; Olivieri, Mario; Soon, Argo; Jarvis, Deborah (2011-05-01). "Lung function decline in relation to mould and dampness in the home: the longitudinal European Community Respiratory Health Survey ECRHS II". *Thorax*. **66** (5): 396–401. doi:10.1136/thx.2010.146613. ISSN 0040-6376. PMID 21325663. S2CID 318027.
33. ^ WHO Housing and health guidelines. World Health Organization. 2018. pp. 34, 47–48. ISBN 978-92-4-155037-6.
34. ^ **a b c** Seltzer, J. M. (1994-08-01). "Building-related illnesses". *The Journal of Allergy and Clinical Immunology*. **94** (2 Pt 2): 351–361. doi:10.1016/0091-6749(94)90096-5. ISSN 0091-6749. PMID 8077589.
35. ^ nasa techdoc 19930072988
36. ^ "Sick Building Syndrome: How indoor plants can help clear the air | University of Technology Sydney".
37. ^ Wolverton, B. C.; Johnson, Anne; Bounds, Keith (15 September 1989). *Interior Landscape Plants for Indoor Air Pollution Abatement (PDF) (Report)*.
38. ^ Joshi, S. M (2008). "The sick building syndrome". *Indian Journal of Occupational and Environmental Medicine*. **12** (2): 61–64. doi:10.4103/0019-5278.43262. PMC 2796751. PMID 20040980.
39. ^ "Benefits of Office Plants – Tove Fjeld (Agri. Uni. Of Norway)". 2018-05-13.
40. ^ "NASA: 18 Plants Purify Air, Sick Building Syndrome". 2016-09-20. Archived from the original on 2020-10-26.
41. ^ "Sick Building Syndrome – How Plants Can Help".
42. ^ How to deal with sick building syndrome: Guidance for employers, building owners and building managers. (1995). Sudbury: The Executive.
43. ^ Scungio, Mauro; Vitanza, Tania; Stabile, Luca; Buonanno, Giorgio; Morawska, Lidia (2017-05-15). "Characterization of particle emission from laser printers" (PDF). *Science of the Total Environment*. **586**: 623–630. Bibcode:2017ScTEn.586..623S. doi:10.1016/j.scitotenv.2017.02.030. ISSN 0048-9697. PMID 28196755.
44. ^ Sauni, Riitta; Verbeek, Jos H; Uitti, Jukka; Jauhiainen, Merja; Kreiss, Kathleen; Sigsgaard, Torben (2015-02-25). *Cochrane Acute Respiratory Infections Group (ed.)*. "Remediating buildings damaged by dampness and mould for preventing or reducing respiratory tract symptoms, infections and asthma". *Cochrane Database of Systematic Reviews*. **2015** (2): CD007897. doi:10.1002/14651858.CD007897.pub3. PMC 6769180. PMID 25715323.
45. ^ Indoor Air Facts No. 4 (revised) Sick building syndrome. Available from: [1].
46. ^ **a b** Menzies, Dick; Bourbeau, Jean (1997-11-20). "Building-Related Illnesses". *New England Journal of Medicine*. **337** (21): 1524–1531. doi:10.1056/NEJM199711203372107. ISSN 0028-4793. PMID 9366585.
47. ^ **a b** Brasche, S.; Bullinger, M.; Morfeld, M.; Gebhardt, H. J.; Bischof, W. (2001-12-01). "Why do women suffer from sick building syndrome more often than men?-- subjective higher sensitivity versus objective causes". *Indoor Air*. **11** (4): 217–222. Bibcode:2001InAir..11..217B. doi:10.1034/j.1600-0668.2001.110402.x. ISSN 0905-6947. PMID 11761596. S2CID 21579339.

48. ^ Godish, Thad (2001). *Indoor Environmental quality*. New York: CRC Press. pp. 196–197. ISBN 1-56670-402-2
49. ^ "Sick Building Syndrome – Fact Sheet" (PDF). *United States Environmental Protection Agency*. Retrieved 2013-06-06.
50. ^ "Sick Building Syndrome". *National Health Service, England*. Retrieved 2013-06-06

## Further reading

[edit]

- o Martín-Gil J., Yanguas M. C., San José J. F., Rey-Martínez and Martín-Gil F. J. "Outcomes of research into a sick hospital". *Hospital Management International*, 1997, pp. 80–82. Sterling Publications Limited.
- o Åke Thörn, *The Emergence and preservation of sick building syndrome*, KI 1999.
- o Charlotte Brauer, *The sick building syndrome revisited*, Copenhagen 2005.
- o Michelle Murphy, *Sick Building Syndrome and the Problem of Uncertainty*, 2006.
- o Johan Carlson, "Gemensam förklaringsmodell för sjukdomar kopplade till inomhusmiljön finns inte" [Unified explanation for diseases related to indoor environment not found]. *Läkartidningen* 2006/12.
- o Bulletin of the Transilvania University of Braşov, Series I: *Engineering Sciences* • Vol. 5 (54) No. 1 2012 "Impact of Indoor Environment Quality on Sick Building Syndrome in Indian Leed Certified Buildings". by Jagannathan Mohan

## External links

[edit]

- o Best Practices for Indoor Air Quality when Remodeling Your Home, US EPA
- o Renovation and Repair, Part of Indoor Air Quality Design Tools for Schools, US EPA
- o Addressing Indoor Environmental Concerns During Remodeling, US EPA
- o Dust FAQs, UK HSE Archived 2023-03-20 at the Wayback Machine
- o CCOHS: Welding - Fumes And Gases | Health Effect of Welding Fumes

<b>Classification</b>	o <b>MeSH:</b> D018877	D
<b>External resources</b>	o <b>Patient UK:</b> Sick building syndrome	

- o v
- o t
- o e

Heating, ventilation, and air conditioning

**Fundamental  
concepts**

- Air changes per hour
- Bake-out
- Building envelope
- Convection
- Dilution
- Domestic energy consumption
- Enthalpy
- Fluid dynamics
- Gas compressor
- Heat pump and refrigeration cycle
- Heat transfer
- Humidity
- Infiltration
- Latent heat
- Noise control
- Outgassing
- Particulates
- Psychrometrics
- Sensible heat
- Stack effect
- Thermal comfort
- Thermal destratification
- Thermal mass
- Thermodynamics
- Vapour pressure of water

## Technology

- Absorption-compression heat pump
- Absorption refrigerator
- Air barrier
- Air conditioning
- Antifreeze
- Automobile air conditioning
- Autonomous building
- Building insulation materials
- Central heating
- Central solar heating
- Chilled beam
- Chilled water
- Constant air volume (CAV)
- Coolant
- Cross ventilation
- Dedicated outdoor air system (DOAS)
- Deep water source cooling
- Demand controlled ventilation (DCV)
- Displacement ventilation
- District cooling
- District heating
- Electric heating
- Energy recovery ventilation (ERV)
- Firestop
- Forced-air
- Forced-air gas
- Free cooling
- Heat recovery ventilation (HRV)
- Hybrid heat
- Hydronics
- Ice storage air conditioning
- Kitchen ventilation
- Mixed-mode ventilation
- Microgeneration
- Passive cooling
- Passive daytime radiative cooling
- Passive house
- Passive ventilation
- Radiant heating and cooling
- Radiant cooling
- Radiant heating
- Radon mitigation
- Refrigeration
- Renewable heat
- Room air distribution
- Solar air heat
- Solar combisystem
- Solar cooling
- Solar heating
- Thermal insulation

- Air conditioner inverter
- Air door
- Air filter
- Air handler
- Air ionizer
- Air-mixing plenum
- Air purifier
- Air source heat pump
- Attic fan
- Automatic balancing valve
- Back boiler
- Barrier pipe
- Blast damper
- Boiler
- Centrifugal fan
- Ceramic heater
- Chiller
- Condensate pump
- Condenser
- Condensing boiler
- Convection heater
- Compressor
- Cooling tower
- Damper
- Dehumidifier
- Duct
- Economizer
- Electrostatic precipitator
- Evaporative cooler
- Evaporator
- Exhaust hood
- Expansion tank
- Fan
- Fan coil unit
- Fan filter unit
- Fan heater
- Fire damper
- Fireplace
- Fireplace insert
- Freeze stat
- Flue
- Freon
- Fume hood
- Furnace
- Gas compressor
- Gas heater
- Gasoline heater
- Grease duct
- Grille
- Ground-coupled heat exchanger

## **Components**

**Measurement  
and control**

- Air flow meter
- Aquastat
- BACnet
- Blower door
- Building automation
- Carbon dioxide sensor
- Clean air delivery rate (CADR)
- Control valve
- Gas detector
- Home energy monitor
- Humidistat
- HVAC control system
- Infrared thermometer
- Intelligent buildings
- LonWorks
- Minimum efficiency reporting value (MERV)
- Normal temperature and pressure (NTP)
- OpenTherm
- Programmable communicating thermostat
- Programmable thermostat
- Psychrometrics
- Room temperature
- Smart thermostat
- Standard temperature and pressure (STP)
- Thermographic camera
- Thermostat
- Thermostatic radiator valve
- Architectural acoustics
- Architectural engineering
- Architectural technologist
- Building services engineering
- Building information modeling (BIM)
- Deep energy retrofit

**Professions,  
trades,  
and services**

- Duct cleaning
- Duct leakage testing
- Environmental engineering
- Hydronic balancing
- Kitchen exhaust cleaning
- Mechanical engineering
- Mechanical, electrical, and plumbing
- Mold growth, assessment, and remediation
- Refrigerant reclamation
- Testing, adjusting, balancing

**Industry  
organizations**

- AHRI
- AMCA
- ASHRAE
- ASTM International
- BRE
- BSRIA
- CIBSE
- Institute of Refrigeration
- IIR
- LEED
- SMACNA
- UMC

**Health and safety**

- Indoor air quality (IAQ)
- Passive smoking
- Sick building syndrome (SBS)
- Volatile organic compound (VOC)
- ASHRAE Handbook
- Building science
- Fireproofing

**See also**

- Glossary of HVAC terms
- Warm Spaces
- World Refrigeration Day
- Template:Home automation
- Template:Solar energy

- v
- t
- e

Employment

## **Classifications**

- Academic tenure
- Casual
- Contingent work
- Full-time job
- Gig worker
- Job sharing
- Part-time job
- Self-employment
- Side job
- Skilled worker
  - Journeyman
  - Technician
  - Tradesperson
- Independent contractor
- Labour hire
- Temporary work
- Laborer
- Wage labour



## **Hiring**

- Application
- Background check
- Business networking
- Cover letter
- Curriculum vitae
- Drug testing
- Employment contract
- Employment counsellor
- Executive search
  - list
- Induction programme
- Job fair
- Job fraud
- Job hunting
- Job interview
- Letter of recommendation
- Onboarding
- Overqualification
- Person–environment fit
- Personality–job fit theory
- Personality hire
- Probation
- Realistic job preview
- Recruitment
- Résumé
- Simultaneous recruiting of new graduates
- Underemployment
- Work-at-home scheme
- Cooperative
- Employee
- Employer
- Internship

## **Roles**

- Job
- Labour hire
- Permanent employment
- Supervisor
- Volunteering

## **Working class**

- Blue-collar
- Green-collar
- Grey-collar
- Pink-collar
- Precariat
- White-collar
- Red-collar
- New-collar
- No-collar
- Orange-collar
- Scarlet-collar
- Black-collar
- Gold-collar

- Apprenticeship
- Artisan
  - Master craftsman
- Avocation
- Career assessment
- Career counseling
- Career development
- Coaching
- Creative class
- Education
  - Continuing education
  - E-learning
  - Employability
  - Further education
  - Graduate school
  - Induction training
  - Knowledge worker
  - Licensure
  - Lifelong learning
  - Overspecialization
  - Practice-based professional learning
  - Professional association
  - Professional certification
  - Professional development
  - Professional school
  - Reflective practice
  - Retraining
  - Vocational education
  - Vocational school
  - Vocational university
- Mentorship
- Occupational Outlook Handbook
- Practice firm
- Profession
  - Operator
  - Professional
- Tradesman
- Vocation

## **Career and training**

## **Attendance**

- Break
- Break room
- Career break
- Furlough
- Gap year
- Leave of absence
- Long service leave
- No call, no show
- Sabbatical
- Sick leave
- Time clock
- 35-hour workweek
- Four-day week
- Eight-hour day
- 996 working hour system

## **Schedules**

- Flextime
- On-call
- Overtime
- Remote work
- Six-hour day
- Shift work
- Working time
- Workweek and weekend
- Income bracket
- Income tax
- Living wage
- Maximum wage
- National average salary
  - World
  - Europe
- Minimum wage
  - Canada
  - Hong Kong
  - Europe
  - United States

## **Wages and salaries**

- Progressive wage
  - Singapore
- Overtime rate
- Paid time off
- Performance-related pay
- Salary cap
- Wage compression
- Working poor

## **Benefits**

- Annual leave
- Casual Friday
- Child care
- Disability insurance
- Health insurance
- Life insurance
- Marriage leave
- Parental leave
- Pension
- Sick leave
  - United States
- Take-home vehicle
- Crunch
- Epilepsy and employment
- Human factors and ergonomics
- Karoshi
- List of countries by rate of fatal workplace accidents
- Occupational burnout
- Occupational disease
- Occupational exposure limit
- Occupational health psychology

## **Safety and health**

- Occupational injury
- Occupational noise
- Occupational stress
- Personal protective equipment
- Repetitive strain injury
- Right to sit
  - United States
- Sick building syndrome
- Work accident
  - Occupational fatality
- Workers' compensation
- Workers' right to access the toilet
- Workplace health promotion
- Workplace phobia
- Workplace wellness
- Affirmative action

## **Equal opportunity**

- Equal pay for equal work
- Gender pay gap
- Glass ceiling

## **Infractions**

- Corporate collapses and scandals
  - Accounting scandals
  - Control fraud
  - Corporate behaviour
  - Corporate crime
- Discrimination
- Exploitation of labour
- Dress code
- Employee handbook
- Employee monitoring
- Evaluation
- Labour law
- Sexual harassment
- Sleeping while on duty
- Wage theft
- Whistleblower
- Workplace bullying
- Workplace harassment
- Workplace incivility
- Boreout
- Careerism
- Civil conscription
- Conscription
- Critique of work
- Dead-end job
- Job satisfaction
- McJob
- Organizational commitment
- Refusal of work
- Slavery

## **Willingness**

- Bonded labour
- Human trafficking
- Labour camp
- Penal labour
- Peonage
- Truck wages
- Unfree labour
- Wage slavery
- Work ethic
- Work–life interface
  - Downshifting
  - Slow living
- Workaholic

## **Termination**

- At-will employment
- Dismissal
  - Banishment room
  - Constructive dismissal
  - Wrongful dismissal
- Employee offboarding
- Exit interview
- Layoff
- Notice period
- Pink slip
- Resignation
  - Letter of resignation
- Restructuring
- Retirement
  - Mandatory retirement
  - Retirement age
  - Retirement planning
- Severance package
  - Golden handshake
  - Golden parachute
- Turnover

## Unemployment

- Barriers to entry
- Discouraged worker
- Economic depression
  - Great Depression
  - Long Depression
- Frictional unemployment
- Full employment
- Graduate unemployment
- Involuntary unemployment
- Jobless recovery
- Phillips curve
- Recession
  - Great Recession
  - Job losses caused by the Great Recession
  - Lists of recessions
  - Recession-proof job
- Reserve army of labour
- Structural unemployment
- Technological unemployment
- Types of unemployment
- Unemployment benefits
- Unemployment Convention, 1919
- Unemployment extension
- List of countries by unemployment rate
- Employment-to-population ratio
  - List
- Wage curve
- Youth unemployment
- Workfare
- Unemployment insurance
- Make-work job
- Job creation program
- Job creation index
- Job guarantee
- Employer of last resort
- Guaranteed minimum income
- Right to work
- *Historical:*
- *U.S.A.:*
- Civil Works Administration
- Works Progress Administration

## Public programs

Comprehensive Employment and Training Act



- Bullshit job
- Busy work
- Credentialism and educational inflation
- Emotional labor
- Evil corporation
- Going postal
- Kiss up kick down
- Labor rights
- Make-work job
- Narcissism in the workplace
- Post-work society
- Presenteeism
- Psychopathy in the workplace
- Sunday scaries
- Slow movement (culture)
- Toxic leader
- Toxic workplace
- Workhouse

## See also

## See also templates

- Aspects of corporations
- Aspects of jobs
- Aspects of occupations
- Aspects of organizations
- Aspects of workplaces
- Corporate titles
- Critique of work
- Organized labor

**Authority control databases:** National            **Or**            **Edit this at Wikidata**

- Japan

- Israel

## About Durham Supply Inc

### Photo

Image not found or type unknown

### Photo

Image not found or type unknown

## Photo

Image not found or type unknown

## Photo

Image not found or type unknown

## Things To Do in Tulsa County

---

### Photo

Image not found or type unknown

### Center of the Universe

**4.4 (4471)**

### Photo

Image not found or type unknown

### The Cave House

**4.6 (249)**

### Photo

## **The Outsiders House Museum**

**4.7 (885)**

**Photo**

Image not found or type unknown

## **Streetwalker Tours**

**0 (0)**

**Photo**

Image not found or type unknown

## **Guthrie Green**

**4.7 (3055)**

**Photo**

**Philbrook Museum of Art**

**4.8 (3790)**

## **Driving Directions in Tulsa County**

---

**Driving Directions From Waffle House to Durham Supply Inc**

**Driving Directions From Dollar General to Durham Supply Inc**

**Driving Directions From Best Western Airport to Durham Supply Inc**

**Driving Directions From East Central High School to Durham Supply Inc**

**Driving Directions From Church on the Move Tulsa to Durham Supply Inc**

**Driving Directions From Brookhaven Hospitales to Durham Supply Inc**

**[Heating contractor](#)**

**[HVAC contractor](#)**

**[Mobile Home Furnace Installation](#)**

**[Mobile Home Air Conditioning Installation Services](#)**

**[Mobile Home Hvac Repair](#)**

**[Mobile Home Hvac Service](#)**

**Driving Directions From The Blue Dome to Durham Supply Inc**

**Driving Directions From Philbrook Museum of Art to Durham Supply Inc**

**Driving Directions From Gathering Place to Durham Supply Inc**

**Driving Directions From OkieTundra to Durham Supply Inc**

**Driving Directions From Tulsa Air and Space Museum & Planetarium to Durham Supply Inc**

**Driving Directions From The Cave House to Durham Supply Inc**

**Mobile home supply store**

**Air conditioning repair service**

**Air conditioning store**

**Air conditioning system supplier**

**Furnace repair service**

**Reviews for Durham Supply Inc**

---

**Durham Supply Inc**

Image not found or type unknown

**Gerald Clifford Brewster**

**(5)**

We will see, the storm door I bought says on the tag it's 36x80, but it's 34x80. If they return it.....they had no problems returning it. And it was no fault of there's, you measure a mobile home door different than a standard door!

## Durham Supply Inc

Image not found or type unknown

**B Mann**

**(5)**

I was in need of some items for a double wide that I am remodeling and this place is the only place in town that had what I needed ( I didn't even try the other rude place )while I was there I learned the other place that was in Tulsa that also sold mobile home supplies went out of business (no wonder the last time I was in there they were VERY RUDE and high priced) I like the way Dunham does business they answered all my questions and got me the supplies I needed, very friendly, I will be back to purchase the rest of my items when the time comes.

## Durham Supply Inc

Image not found or type unknown

**Ty Spears**

**(5)**

Bought a door/storm door combo. Turns out it was the wrong size. They swapped it out, quick and easy no problems. Very helpful in explaining the size differences from standard door sizes.

## Durham Supply Inc

Image not found or type unknown

**Dennis Champion**

**(5)**

Durham supply and Royal supply seems to find the most helpful and friendly people to work in their stores, we are based out of Kansas City out here for a few remodels and these guys treated us like we've gone there for years.

## Durham Supply Inc

Image not found or type unknown

**Ethel Schiller**

**(5)**

This place is really neat, if they don't have it they can order it from another of their stores and have it there overnight in most cases. Even hard to find items for a trailer! I definitely recommend this place to everyone! O and the prices is awesome too!

## Frequently Asked Questions

**Can I combine manufacturer rebates with financing options when purchasing an HVAC system for a mobile home?**

Yes, you can often combine manufacturer rebates with financing options. Many HVAC retailers and manufacturers offer promotions that allow you to apply for rebates while also opting for installment payment plans. It's important to check the specific terms and conditions of each rebate program and financing option to ensure they are compatible.

**What should I consider when choosing between different financing options for an HVAC purchase?**

When selecting a financing option, consider interest rates, loan terms, monthly payments, and any fees associated with the financing plan. Look for 0% interest or low-interest promotional offers if available, and calculate the total cost over time compared to upfront payments. Additionally, assess your budget to determine what monthly payment is manageable without financial strain.

**How do I find available rebates for mobile home AC systems?**

To find available rebates, start by checking the websites of HVAC manufacturers as they often list current promotions and rebate offers. Local utility companies might also provide incentives for energy-efficient installations. Additionally, some government programs offer tax credits or rebates for eco-friendly upgrades; it's advisable to consult their websites or

customer service representatives for more information on eligibility and application processes.

Royal Supply Inc

Phone : +16362969959

City : Oklahoma City

State : OK

Zip : 73149

Address : Unknown Address

### **Google Business Profile**

Company Website : <https://royal-durhamsupply.com/locations/oklahoma-city-oklahoma/>

### **Sitemap**

### **Privacy Policy**

### **About Us**

Follow us