

evolution of garage door



- **News**
- **Exploring Differences Among Sectional and Roller Doors**
Exploring Differences Among Sectional and Roller Doors Distinguishing Features of Modern and Traditional Styles Characteristics of Carriage House Style Garage Doors Identifying Unique Aspects of Contemporary Designs Understanding Factors that Influence Style Selection Visual Aspects of Window Inserts in Door Designs Suitability of Certain Styles for Various Home Exteriors Evaluating Popular Configurations for Residential Use Common Considerations for Matching Door Styles Exploring Minimalist Influences in Garage Door Aesthetics Approaches to Integrating Garage Door Style with Architecture Factors Affecting Long Term Satisfaction with Chosen Style
- **Key Functions of Smart Enabled Garage Door Openers**
Key Functions of Smart Enabled Garage Door Openers Connecting Garage Doors to Home Automation Systems Steps for Integrating Smartphone Access Controls Evaluating Compatibility with Wifi Enabled Devices Reviewing Basic Security Features in Smart Openers Adjusting Remote Settings for Personalized Access Understanding Software Updates for Connected Systems Options for Voice Controlled Garage Door Operation Methods for Troubleshooting

Connectivity Issues Exploring Timers and Scheduling Functions Ensuring Privacy and Data Security in Smart Door Systems Adapting Traditional Doors for Modern Automation

- **About Us**



door devices, one crucial factor to consider is their compatibility with WiFi-enabled devices. Emergency garage door repair services are often available 24/7 **liftmaster garage door repair** debris. Understanding the key features that facilitate this compatibility can help consumers make well-informed decisions.

At the forefront of compatibility considerations is seamless connectivity. A smart garage door device should effortlessly connect to a home's existing WiFi network

without causing disruptions to other devices. This involves support for both 2.4 GHz and 5 GHz bands, ensuring stable connections across various network environments. Devices that automatically detect and switch between these bands provide an added layer of reliability, especially in homes with complex network setups.

Another essential feature is integration capability with other smart home systems and platforms. A truly compatible smart garage door device should work harmoniously with major voice assistants like Amazon Alexa, Google Assistant, or Apple's Siri. This enables users to control their garage doors through simple voice commands or via unified apps that manage multiple smart home functions. Additionally, compatibility with IFTTT (If This Then That) expands automation possibilities by allowing users to create custom triggers and actions based on specific conditions.

Security cannot be overlooked when discussing WiFi-enabled compatibility in smart garage door devices. Features such as encrypted communications and secure user authentication are vital to protect against unauthorized access or cyber threats. Devices that offer two-factor authentication provide an extra layer of security by requiring users to verify their identity through a secondary method before gaining access.

User-friendly mobile applications also play a critical role in enhancing device compatibility with WiFi-enabled systems. These apps should be intuitive and accessible across different operating systems such as iOS and Android, offering

real-time alerts and remote control capabilities from virtually anywhere in the world. Moreover, user-friendly interfaces make it easier for homeowners to set up schedules, monitor usage logs, and receive notifications about any unusual activity.

Firmware updates are another important consideration when assessing compatibility features for smart garage door devices. Regular updates ensure that the device remains secure against evolving threats while also introducing new functionalities or improving existing ones. Devices that support over-the-air (OTA) updates allow for hassle-free upgrades without requiring physical intervention from the user.

Finally, energy efficiency is an often-overlooked aspect that contributes to overall system harmony within a connected home environment. Smart garage door openers designed with efficient power consumption minimize strain on household energy resources while providing uninterrupted service even during peak usage times.

In conclusion, evaluating the key features of smart garage door devices concerning their compatibility with WiFi-enabled systems involves examining connectivity options, integration capabilities with other platforms, robust security measures, user-friendly applications, regular firmware updates, and energy efficiency considerations. By focusing on these aspects during selection processes or product comparisons—homeowners can ensure they invest in reliable technology tailored specifically towards enhancing their modern living experiences seamlessly integrated into today's digital age landscape.

In the age of smart technology, the integration of WiFi-enabled devices into various aspects of our daily lives has become increasingly prevalent. One area where this integration is particularly noteworthy is within garage infrastructure. Assessing compatibility with existing garage setups poses both opportunities and challenges, as it requires a nuanced understanding of both technological capabilities and practical considerations.

At the core of evaluating compatibility lies the need to understand the existing garage infrastructure. Traditional garages have primarily been designed for mechanical storage and protection of vehicles, without much thought given to connectivity or digital integration. Therefore, retrofitting these spaces with smart technology involves careful consideration of several factors.

Firstly, there is the issue of physical space and layout. Many garages were not initially built with wiring or network setups conducive to supporting WiFi-enabled devices such as smart garage door openers, lighting systems, or security cameras. Assessing whether there is adequate space for additional wiring or if wireless solutions can be effectively employed without interference from physical barriers like walls is crucial.

Secondly, power supply becomes an important factor in assessing compatibility. Traditional garages might not have sufficient power outlets positioned conveniently for new devices that require constant electricity supply. Ensuring that there are enough outlets—and importantly, safe ones—can determine how easily new

technology can be integrated into a traditional setup.

Another critical consideration is network strength and reliability. Garages are often located on the periphery of home WiFi networks, which means they might suffer from weak signal strength or spotty connections. Before integrating any smart devices that rely on strong connectivity, it is essential to test and possibly enhance network coverage in these areas through boosters or strategic placement of routers.

Moreover, assessing compatibility involves understanding user interaction and convenience. The goal of adding WiFi-enabled devices should be to enhance usability rather than complicate everyday tasks. Therefore, it's essential to ensure that any new technology introduced can be easily operated by all potential users without requiring substantial technical know-how or frequent troubleshooting.

Furthermore, security cannot be overlooked when discussing compatibility with WiFi-enabled devices in garages. As more connected devices are introduced into personal spaces like garages—which may contain valuable items—not only does it raise concerns about hacking but also about privacy breaches. Ensuring robust security measures are in place when integrating these technologies is paramount to maintaining trust and safeguarding personal assets.

Lastly, cost considerations play a significant role in determining the feasibility of upgrading a garage's infrastructure to support WiFi-enabled devices. While initial

investments might seem daunting due to costs associated with purchasing new equipment and possibly hiring professionals for installation, it's vital to weigh these against long-term benefits such as increased property value and enhanced convenience.

In conclusion, while integrating WiFi-enabled devices into existing garage infrastructures offers exciting possibilities for enhanced functionality and convenience, it requires thorough assessment across multiple dimensions including physical layout, power supply adequacy, network strength and reliability, user interaction ease-of-use concerns, security measures, and cost-effectiveness. By carefully evaluating each aspect before proceeding with integration efforts homeowners can make informed decisions that lead towards creating smarter more efficient living environments tailored specifically their needs.

More about us:

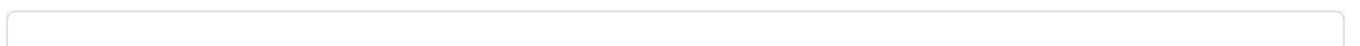
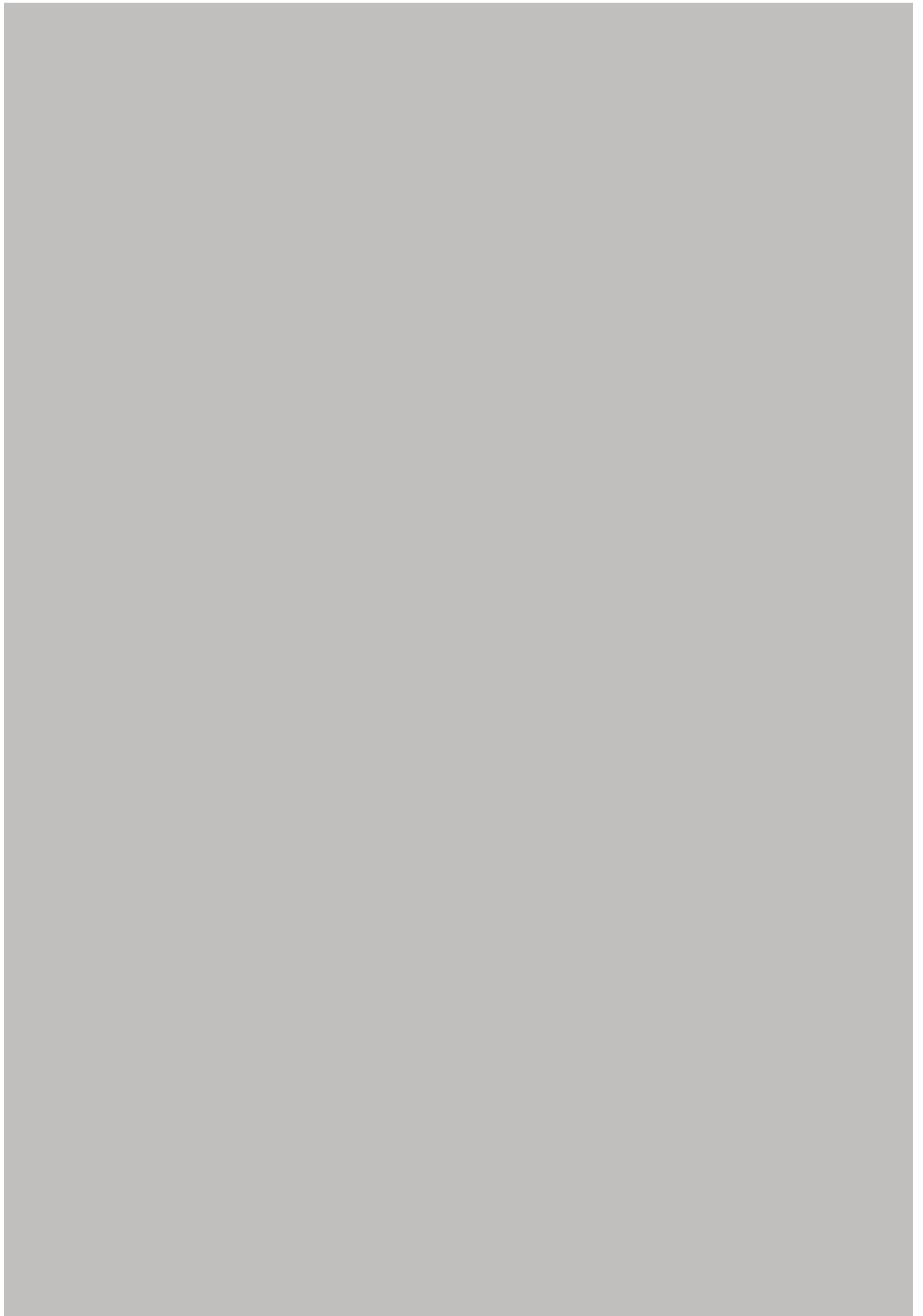
<https://lawsdraws.tumblr.com/post/771484140912705536/as-we-charge-into-2025-garage-doors-are-no-longer>

Social Media About us:

emergency garage door repair

How to reach us:

24 hour garage door repair



Addressing repair needs for sectional versus roller garage doors

When it comes to addressing repair needs for garage doors, homeowners often find themselves at a crossroads when deciding between sectional and roller door systems.. Both types have their unique characteristics and serve specific purposes, making the selection of professional services an essential step in ensuring efficient repairs. Sectional garage doors are composed of horizontal panels that are connected by hinges.



Posted by on 2025-01-01

Balancing aesthetics and functionality in garage door style repairs

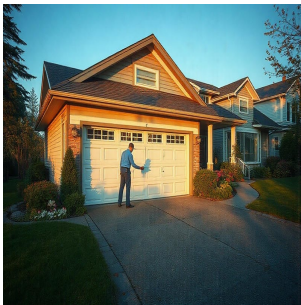
In the realm of garage door design and repair, the future is being shaped by an increasing emphasis on balancing aesthetics with functionality.. As homeowners seek to enhance curb appeal while ensuring practicality, this dual focus is reshaping how we think about garage doors. Traditionally, garage doors were viewed primarily as utilitarian structures—meant to secure vehicles and storage items from external elements.



Posted by on 2025-01-01

Common repair issues with traditional garage door styles

Garage doors, often overlooked yet crucial elements of our homes, serve not only as entry points but also as vital components of our property's aesthetic and security.. Traditional garage door styles, such as those made from wood or steel panels, are renowned for their classic appeal and robustness.



Posted by on 2025-01-01

How automation systems simplify garage door repair processes

As we stand on the brink of an era where technology seamlessly integrates into every aspect of our lives, the evolution of automated garage door systems presents a fascinating glimpse into the future.. The traditional manual operations of garage doors are rapidly being replaced by sophisticated automation systems that promise to simplify repair processes and redefine convenience for homeowners.



Posted by on 2025-01-01

Material Choices and Durability: Discussion on common materials used for each type of door, their durability, maintenance

requirements, and impact on longevity.

In today's fast-paced digital world, the seamless operation of WiFi-enabled devices is crucial for both personal and professional environments. As technology evolves, so do the network requirements needed to support a plethora of devices ranging from smartphones and laptops to smart home gadgets and IoT equipment. Evaluating network requirements for optimal performance necessitates a thorough understanding of compatibility issues that may arise with WiFi-enabled devices.

The first step in this evaluation is recognizing the diversity of devices that will be connected to the network. Each device may have different specifications, such as WiFi standards (e.g., 802.11a/b/g/n/ac/ax), frequency bands (2.4 GHz vs. 5 GHz), and bandwidth needs. For instance, while older devices might only support 2.4 GHz frequencies, newer gadgets are often equipped to handle 5 GHz or even dual-band capabilities, offering faster speeds and reduced interference.

Compatibility also extends beyond frequency bands; it involves ensuring that the router's firmware is up-to-date and capable of supporting the latest standards and security protocols like WPA3. An outdated router may not only limit performance but also pose security risks to all connected devices.

Another critical factor in evaluating network requirements is understanding the coverage area versus device location dynamics. A well-designed network must account for physical barriers such as walls and floors that can impede signal strength. Conducting a site survey helps identify dead zones where connectivity drops off significantly, allowing for strategic placement of routers or additional access points to ensure consistent coverage throughout an environment.

Moreover, simultaneous connections play a significant role in determining optimal network performance. With an increasing number of smart home devices relying on constant connectivity – from thermostats to security cameras – networks must be evaluated on their ability to handle numerous connections without degrading speed or reliability.

Finally, it's essential to anticipate future needs by considering scalability options within your current infrastructure. As more advanced WiFi technologies emerge, such as WiFi 6E operating on the newly available 6 GHz band, networks should be assessed for their capacity to integrate these advancements seamlessly when required.

In conclusion, evaluating compatibility with WiFi-enabled devices involves a multifaceted approach that includes understanding device specifications, maintaining up-to-date hardware and software configurations, optimizing physical coverage areas, managing device density efficiently, and planning for future technological integrations. By thoroughly assessing these aspects, one can achieve a robust network setup that ensures optimal performance across all connected devices now and into the foreseeable future.



Insulation and Energy Efficiency: Evaluating the

insulation properties of sectional and roller doors and how they affect energy efficiency in a home or commercial setting.

In today's rapidly evolving technological landscape, the proliferation of connected devices has become a defining feature of our digital age. From smart refrigerators to intelligent thermostats, these devices promise unprecedented convenience and functionality. However, with this burgeoning connectivity comes a host of security concerns that warrant careful consideration, particularly when evaluating compatibility with WiFi-enabled devices.

At the heart of understanding security concerns with connected devices is the recognition that each device represents a potential entry point for cyber threats. As these devices communicate over WiFi networks, they can inadvertently expose sensitive information if not adequately secured. This risk is compounded by the fact

that many connected devices are designed with convenience in mind rather than robust security measures. Consequently, they may lack critical features like encryption or strong authentication protocols, making them attractive targets for malicious actors.

When evaluating compatibility with WiFi-enabled devices, it is crucial to consider both functional and security aspects. Compatibility ensures that a device can seamlessly integrate into an existing network without causing disruptions or conflicts. However, achieving this compatibility should not come at the expense of security. Devices should be scrutinized for their ability to support secure communication standards such as WPA3 encryption and should ideally offer regular firmware updates to address emerging vulnerabilities.

Furthermore, users must be mindful of how their data is managed by these smart devices. Connected gadgets often collect vast amounts of personal data to function effectively—whether it's usage patterns or location information—and this data must be protected from unauthorized access or misuse. Therefore, transparency in data handling practices and user control over privacy settings are essential considerations during the evaluation process.

To mitigate risks associated with connecting new devices to a WiFi network, users can adopt several best practices. Implementing strong passwords for network access points and enabling guest networks can help isolate IoT devices from critical systems within a home or business infrastructure. Additionally, maintaining awareness about device-specific vulnerabilities through reputable sources can

empower users to take proactive steps in securing their digital environments.

In conclusion, while the integration of connected devices into our daily lives holds immense promise for enhancing efficiency and comfort, it also necessitates a vigilant approach to security concerns. Evaluating compatibility with WiFi-enabled devices requires more than just ensuring operational harmony; it demands an understanding of potential risks and implementing strategies to safeguard against them. By prioritizing security alongside functionality, we can enjoy the benefits of connectivity without compromising our digital safety.

Security Features: Analyzing the security features inherent to sectional versus roller doors, including locking mechanisms and

resistance to forced entry.

Evaluating the compatibility of WiFi-enabled devices involves a nuanced understanding of both the installation process and various technical considerations. As we continue to embrace an increasingly interconnected world, ensuring that our devices seamlessly communicate with one another has become crucial. This essay delves into these aspects to provide a comprehensive overview.

The installation process for WiFi-enabled devices often begins with basic setup procedures, such as connecting the device to a power source and configuring it through either an app or web interface. However, this seemingly straightforward task can quickly become complex, depending on the device's requirements and the existing network infrastructure. For instance, some devices may require specific firmware updates or a particular version of operating system software to function optimally. Additionally, factors such as proximity to the router and potential interference from other electronic devices can significantly impact performance during installation.

A critical technical consideration when evaluating compatibility is network specifications. Not all WiFi-enabled devices support every frequency band; some might only connect via 2.4 GHz while others are compatible with 5 GHz bands. The choice between these depends largely on the environment: 2.4 GHz offers broader coverage but is more susceptible to interference, whereas 5 GHz provides faster

speeds but over shorter distances. Understanding these differences can help determine which band's characteristics align best with a given device's intended use.

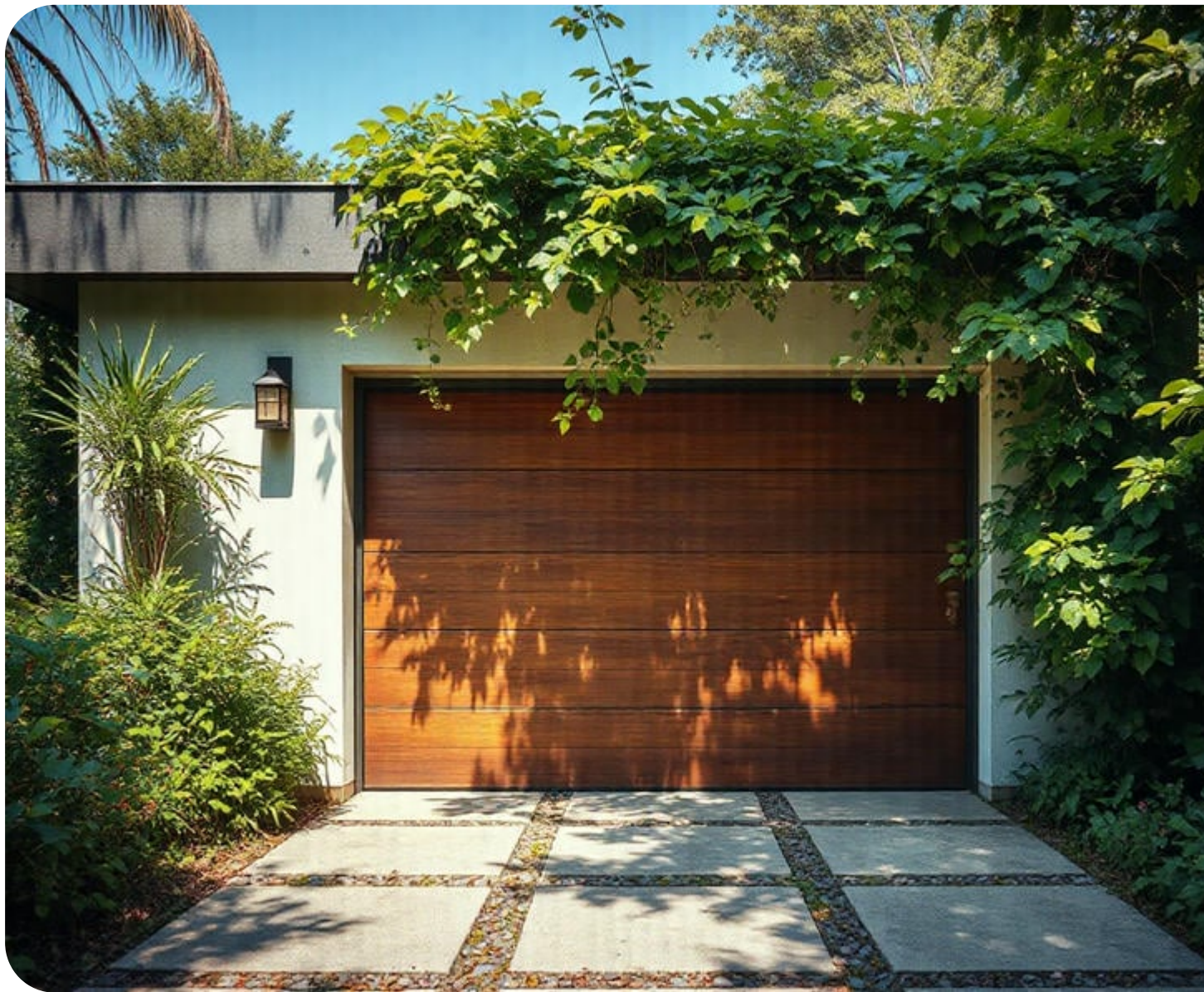
Security protocols also play a vital role in compatibility evaluation. WPA3 represents the latest standard in wireless security, offering robust protection against unauthorized access. However, not all older devices support WPA3, necessitating either updates or alternative security measures like WPA2-Personal for harmonious integration into existing networks.

Interoperability is another significant factor; many modern homes feature devices from multiple manufacturers that need to work together without hitches. Ensuring compatibility often involves checking whether a device adheres to universal standards like IEEE 802.11ac or newer iterations such as 802.11ax (Wi-Fi 6), which promise improved performance and efficiency.

Furthermore, smart home ecosystems like Apple HomeKit, Google Assistant, or Amazon Alexa add layers of complexity since each has its own set of requirements for integration and functionality. Devices must be evaluated based on their ability to interact with these platforms if users wish to leverage voice control or automated routines effectively.

In conclusion, evaluating compatibility with WiFi-enabled devices requires careful consideration of both installation processes and technical features such as network specifications, security protocols, interoperability standards, and ecosystem

integration capabilities. By understanding these elements thoroughly before purchasing or installing new equipment, users can ensure smoother operation within their digital environments while maximizing their investment in technology.





**Cost Comparison: Breaking
down the initial costs, long-**

term value, maintenance expenses, and potential return on investment for each door type.

In today's increasingly digital world, maintaining a reliable internet connection is crucial for both personal and professional activities. As we become more reliant on WiFi-enabled devices—ranging from smartphones and laptops to smart home appliances and IoT gadgets—it is essential to ensure that these devices are compatible with our wireless networks. Troubleshooting connectivity issues often starts with evaluating compatibility, which can prevent many common problems before they even arise.

To begin with, understanding the specifications of both your WiFi network and the devices you wish to connect is key. Different devices support different wireless standards such as 802.11n, 802.11ac, or the newer 802.11ax (Wi-Fi 6). Ensuring that your router and device are operating on compatible standards can alleviate many potential connectivity hiccups. For instance, an older device might not support the

latest protocols offered by a new router, leading to dropped connections or poor performance.

Another critical aspect of compatibility is frequency bands. Most modern routers operate on dual-band frequencies: 2.4 GHz and 5 GHz. Each has its advantages; 2.4 GHz covers a wider area but offers slower speeds, while 5 GHz provides faster speeds over shorter distances. Devices must be able to recognize and connect to these frequencies to function optimally within a network environment. Ensuring your device supports both bands can offer flexibility in managing connections based on proximity to the router or desired speed.

Security settings also play a significant role in compatibility evaluation. WiFi networks protected by security protocols like WPA3 provide enhanced security but may not be supported by older devices that only recognize WPA2 or even WEP encryption standards. In such cases, updating device firmware or adjusting router settings might resolve connectivity issues without compromising security.

Furthermore, the physical environment impacts compatibility as well—interference from walls, electronic appliances, or other WiFi networks can degrade signal quality and affect how well devices communicate with your network infrastructure. Performing site surveys using apps designed for WiFi analysis can help identify dead zones and sources of interference within your space.

Lastly, it's important not to overlook software factors when troubleshooting connectivity issues related to compatibility. Outdated drivers or operating systems can create unnecessary barriers between your device and network access points. Regularly updating software ensures that all components of communication are optimized for modern networking environments.

In summary, evaluating compatibility between Wifi-enabled devices and networks involves checking hardware specs like wireless standards and frequency band support while also considering software updates and environmental influences that could impede performance quality if left unaddressed during setup processes involving newer models alongside legacy systems already present at homes/offices today! By taking proactive steps towards understanding these elements ahead-of-time users stand better prepared when facing unexpected disruptions down road thereby minimizing frustration associated otherwise inevitable downtime resulting ultimately smoother seamless experiences overall!

About warranty

The examples and perspective in this article **deal primarily with the United States and do not represent a worldwide view of the subject**

 **icon.**

Image not found or type unknown

You may improve this article, discuss the issue on the talk page, or create a new article, as appropriate. *(September 2010)* *(Learn how and when to remove this message)*

This article's lead section **may be too technical for most readers to**



understand. Please help improve it to make it understandable to non-experts, without removing the technical details. *(March 2021)* *(Learn how and when to remove this message)*

In law, a **warranty** is an expressed or implied promise or assurance of some kind. The term's meaning varies across legal subjects.^[1] In property law, it refers to a covenant by the grantor of a deed.^[2] In insurance law, it refers to a promise by the purchaser of an insurance about the thing or person to be insured.^[3]

In contract law, a warranty is a contractual assurance given, typically, by a seller to a buyer,^[4] for example confirming that the seller is the owner of the property being sold.^[5] A warranty is a term of a contract, but not usually a condition of the contract or an innominate term, meaning that it is a term "not going to the root of the contract",^[6] and therefore only entitles the innocent party to damages if it is breached,^[6] i.e. if the warranty is not true or the defaulting party does not perform the contract in accordance with the terms of the warranty. A warranty is not a guarantee: it is a mere promise. It may be enforced if it is breached by an award for the legal remedy of damages.

Depending on the terms of the contract, a product warranty may cover a product such that a manufacturer provides a warranty to a consumer with whom the manufacturer has no direct contractual relationship because it is purchased via an intermediary.

A warranty may be express or implied. An express warranty is expressly stated (typically, written); whether or not a term will be implied into a contract depends on the particular contract law of the country in question. Warranties may also state that a particular fact is true at a point in time, or that the fact will continue into the future (a "continuing warranty").

Express warranty

[edit]

Main article: Express warranties

Express warranties are created when the seller makes a guarantee to the buyer that the product or service being offered has certain qualities. For there to exist an express warranty, a statement regarding the product or service must be made to the buyer and the statement must play a role in the buyer's decision to purchase the product or service. If, after purchase, the buyer feels that the given statement was a misrepresentation of the actual product or service, the buyer can file for breach of express warranty.^[7]

Implied warranty

[edit]

Main article: Implied warranty

Implied warranties are unwritten promises that arise from the nature of the transaction, and the inherent understanding by the buyer, rather than from the express representations of the seller.

Sale of goods

[edit]

Main article: Sale of goods

Warranties provided in the sale of goods (tangible products) vary according to jurisdiction, but commonly new goods are sold with implied warranty that the goods are as advertised. Used products, however, may be sold "as is" with no warranties. Each country, however, defines its own parameters with regard

to implied conditions or implied warranties. The rules regarding warranties are largely standardised; i.e., the concepts of *offer*, *acceptance*, *consideration*, *capacity to contract* and *intention to create legal relations*. Those are the five elements to create a legally binding contract in the United States (all 50 states), England and Wales, Scotland and Northern Ireland, each of the seven states of Australia, and all other common law countries. Countries with civil law systems, however, recognise legally binding contracts which are not supported by consideration.^[citation needed]

United States

[edit]

In the United States, various laws apply, including provisions in the Uniform Commercial Code which provide for implied warranties.^[8] However, these implied warranties were often limited by disclaimers. In 1975 the Magnuson–Moss Warranty Act was passed to strengthen warranties on consumer goods.^[9] Among other things, under the law implied warranties cannot be disclaimed if an express warranty is offered, and attorney fees may be recovered.^[9] In some states, statutory warranties are required on new home construction, and "lemon laws" apply to motor vehicles.

Article 2 of the Uniform Commercial Code, which has been adopted with variations in each state, provides that the following two warranties are implied unless they are explicitly disclaimed (such as an "as is" statement):

- The **warranty of merchantability** is implied unless expressly disclaimed by name, or the sale is identified with the phrase "as is" or "with all faults." To be "merchantable", the goods must reasonably conform to an ordinary

buyer's expectations. For example, a fruit that looks and smells good but has hidden defects may violate the warranty if its quality does not meet the standards for such fruit "as passes ordinarily in the trade". In most states, products inherently come with implied warranty of merchantability; however, in states like Massachusetts under consumer protection law, it is illegal to disclaim this warranty on household goods sold to consumers. (Massachusetts General Laws, Chapter 106: Section 2-316A)

- The **warranty of fitness for a particular purpose** is implied unless disclaimed when a buyer relies upon the seller to select the goods to fit a specific request. For example, this warranty is violated when a buyer asks a mechanic to provide tires for use on snowy roads and receives tires that are unsafe to use in snow.

Defects In Materials and Workmanship

[edit]

A common kind of warranty on goods is a warranty that the product is free from material defects in materials and workmanship. This simply promises that the manufacturer properly constructed the product, out of proper materials. This implies that the product is not defective for the purposes for which it was made.

Warranties may be time limited, thus limiting the time the buyer has to make a claim for breach of warranty. For example, a typical 90-day warranty on a television gives the buyer 90 days from the date of purchase to claim that the television was improperly constructed. Should the television fail after 91 days of normal usage, which because televisions customarily last longer than 91 days

means there was a defect in the materials or workmanship of the television, the buyer nonetheless may not collect on the warranty because it is too late to file a claim. Consumer protection laws implemented by statute, however, provide additional remedies as it is not usually expected that a television will last for only 90 days.

Time-limited warranties are often confused with performance warranties. A 90-day performance warranty would promise that the television would work for 90 days, which is fundamentally different from promising that it was delivered free of defects and limiting the time the buyer has to prove otherwise. But because the usual evidence that a product was delivered defective is that it later breaks, the effect is very similar.

One situation in which the effect of a time-limited warranty is different from the effect of a performance warranty is where the time limit exceeds a normal lifetime of the product. If a coat is designed to last two years, but has a 10-year limited warranty against defects in materials and workmanship, a buyer who wears the coat for 3 years and then finds it worn out would not be able to collect on the warranty. But it is different from a 2-year warranty because if the buyer starts wearing the coat 5 years after buying it, and finds it wears out a year later, the buyer would have a warranty claim in Year 6. On the other hand, a 10-year performance warranty would promise that the coat would last 10 years.

Satisfaction guarantee

[edit]

In the United States, the Magnuson–Moss Warranty Act of 1976 provides for enforcement of a satisfaction guarantee warranty. In these cases, the advertiser must refund the full purchase price regardless of the reason for dissatisfaction.^[10]

Lifetime warranty

[edit]

A lifetime warranty is usually a warranty against defects in materials and workmanship that has no time limit to make a claim, rather than a warranty that the product will perform for the lifetime of the buyer.^[11] The actual time that product can be expected to perform is normally determined by the custom for products of its kind used the way the buyer uses it.

If a product has been discontinued and is no longer available, the warranty may last a limited period longer. For example:

- the Cisco Limited Lifetime Warranty currently lasts for five years after the product has been discontinued, but only if you know where you bought it from as the seller is responsible for administering it.^[12]
- HP Networking product lifetime warranties last for as long as one owns the product.^[13]

Limited warranty

[edit]

A warranty may be limited in duration (as above) and/or in scope. In *Avrora Fine Arts v Christie, Manson and Woods* (a UK High Court case), the

auctioneers had issued a "limited warranty" that a certain painting sold at auction had been painted by the Russian painter Boris Kustodiev, which experts subsequently stated was not the case. The sale was cancelled and the buyer was reimbursed, but further claims of negligence and misrepresentation were denied because they fell outside the warranty's scope.^[14]

Breach of warranty

[edit]

Warranties are breached when the promise is not performed at all, or not performed in accordance with the contract. The seller may honor the warranty by making a refund or a replacement. The statute of limitations depends on the jurisdiction and contractual agreements. In the United States, the Uniform Commercial Code § 2-725 provides for a four-year time limit, which can be limited to one year by contract, starting from the date of delivery or if future performance is guaranteed from the date of discovery. Refusing to honor the warranty may be an unfair business practice. In the United States, breach of warranty lawsuits may be distinct from revocation of contract suits; in the case of the breach of warranty, the buyer's item is repaired or replaced while breach of contract involves returning the item to the seller.^[15]

Warranty label on top of a hard disk

Image not found or type unknown

Warranty label on top
of a hard disk

Warranty label lifted. The word "VOID" is shown multiple times

Image not found or type unknown

Warranty label lifted.

The word "VOID" is
shown multiple times.

Some warranties require that repairs be undertaken by an authorized service provider. In such cases, service by non-authorized personnel or company may void (nullify) the warranty. However, according to the Magnuson-Moss Act (a U.S. Federal law that governs warranties, which was passed in 1975), if the warranty does not provide full or partial payment of labor (to repair the device or system), it is the owner's choice who will provide the labor, including the possibility of DIY ("Do It Yourself") repairs, in which case the device or system owner will pay zero dollars for labor, yet the company that provided the warranty must still provide all the parts needed for the repair at absolutely no charge to the owner.

If the defective product causes injury, this may be a cause of action for a product liability lawsuit (tort). Strict liability may be applied.

Extended warranty

[edit]

In addition to standard warranties on new items, third parties or manufacturers may sell or offer extended warranties (also called service contracts).^[16] These extend the warranty for a further length of time. However,

these warranties have terms and conditions which may not match the original terms and conditions. For example, these may not cover anything other than mechanical failure from normal usage. Exclusions may include commercial use, "acts of God", owner abuse, and malicious destruction. They may also exclude parts that normally wear out such as tires and lubrication on a vehicle.

These types of warranties are provided for various products, but automobiles and electronics are common examples. Warranties which are sold through retailers such as Best Buy may include significant commission for the retailer as a result of reverse competition.^[17] For instance, an auto warranty from a car dealership may be subcontracted and vehicle repairs may be at a lower rate which could compromise the quality of service. At the time of repair, out-of-pocket expenses may be charged for unexpected services provided outside of the warranty terms or uncovered parts. Extended Warranties are mostly back to back underwritten by underwriters, who are the actual bearer of the risk.

Representations versus warranties

[edit]

Further information: Misrepresentation

Statements of fact in a contract or in obtaining the contract are considered to be either warranties or representations. Traditionally, warranties are factual promises which are enforced through a contract legal action, regardless of materiality, intent, or reliance.^[18] Representations are traditionally *pre*contractual statements which allow for a tort-based action if the misrepresentation is innocent, negligent or fraudulent.^[19] In U.S. law, the

distinction between the two is somewhat unclear;^[18] warranties are viewed as primarily contract-based legal action while negligent or fraudulent misrepresentations are tort-based, but there is a confusing mix of case law in the United States.^[18] In modern English law, sellers often avoid using the term 'represents' in order to avoid claims under the Misrepresentation Act 1967 (although English law will look to the substance rather than the form of the representation to decide what it is), while in America 'warrants and represents' is relatively common.^[20] Some modern commentators suggest avoiding the words and substituting 'state' or 'agree', and some model forms do not use the words;^[19] however, others disagree.^[21]

Product types

[edit]

Appliance warranty

[edit]

Canada and United States

[edit]

Written warranties on new major appliances, such as refrigerators, kitchen stoves and dishwashers, usually cover the cost of parts and labor to repair defects in materials or workmanship which appear under normal home use.

Warranties often cover defects up to a year after purchase or delivery.^[22]

However some exclude new owners when a house or appliance is sold within the year (Frigidaire,^[23] LG,^[24] Samsung^[25]). Others do let warranties

transfer to new buyers (Amana,^[26] General Electric,^[27] Whirlpool). Some manufacturers cover refrigerators' sealed parts (compressors, tubing, etc.) for five years (General Electric,^[27] Samsung,^[28] Whirlpool)^[25] or seven years (LG^[24]) or ten years (KitchenAid^[29]).

Warranties on water heaters cover parts for 5 to 12 years in single family residences, one year otherwise. They do not cover new owners when a house or heater is sold; nor do they cover the original owner if the heater is moved to a second location.^[30]^[31]^[32]^[33]^[34] Tank models from A. O. Smith do not allow heating elements to be replaced with lower (or higher) wattages, and do not cover renter-occupied single family. They end if the unit is flooded or ever uses desalinated or deionized water, such as municipal desalination plants or reverse osmosis filters.^[32]^[33] Smith's tank models for manufactured housing do not provide coverage if a whirlpool or hot tub is connected.^[33]

Tank water heater warranties exclude labor, liability for water damage, and shipping cost to return the old heater or parts. Tankless warranties do not exclude water damage; they cover labor for a year, and Ruud/Rheem covers return shipping on tankless models.^[31]^[34] Smith's tankless water heaters do not restrict coverage to a single family, and require professional installation.^[34]

Implied warranties under US law could extend for longer periods. However, most states allow the written warranties to include clauses which limit these implied warranties to the same time period as the written warranty.^[35]

Car warranty

[edit]

United States

[edit]

New car factory warranties commonly range from one year to five years and in some cases extend even 10 years, with typically a mileage limit as well. Car warranties can be extended by the manufacturer or other companies with a renewal fee.

Used car warranties are usually 3 months and 3,000 miles.

United Kingdom

[edit]

In the United Kingdom, types of warranties have been classified as either an:

1. original manufacturer warranty,
2. insurance warranty underwritten and regulated as insurance or
3. obligor warranty, typically written by a car dealership or garage.

In the United Kingdom, the Financial Conduct Authority (FCA), which began to regulate insurance contracts in this context in 2005, determined that additional warranties sold by car dealerships are "unlikely to be insurance".^[36] Insurance warranties may offer greater protection to the consumer.

Home Warranty

[edit]

Main article: Home warranty

A home warranty protects against the costs of home and appliance repair by offering home warranty coverage for houses, townhomes, condominiums, mobile homes, and new construction homes. When a problem occurs with a covered appliance or mechanical system such as an air conditioning unit or furnace, a service technician repairs or replaces it. The homeowner may have to pay for a service call fee and the home warranty company pays the balance for the repair or replacement of the covered item.

Intellectual property right warranty

[edit]

An intellectual property right (IPR) warranty provides contractual protection against breach of rights in software development and other fields where IPR is protected. Increasing reluctance on the part of suppliers to offer an IPR warranty or indemnity has been noted in recent years.^[37]

Warranty data

[edit]

Warranty data consists of claims data and supplementary data. Claims data are the data collected during the servicing of claims under warranty and supplementary data are additional data such as production and marketing data.^[38] This data can help determine product reliability and plan for future modifications.^[38]

See also

[edit]

- Business law
- Collateral TORT
- Consumer protection
- Due diligence
- Extended warranty
- Magnuson-Moss Warranty Act
- Surety
- Warranty deed
- Warranty tolling

References

[edit]

1. **^** *Gilmore, Grant; Black, Jr., Charles L. (1975). The Law of Admiralty. Foundation Press. p. 63. ISBN 0882774093.*
2. **^** *Black's Law Dictionary (15 ed.). Thomson Reuters West. 2015. p. 1344. ISBN 9780314642721.*
3. **^** *Black's Law Dictionary (15 ed.). Thomson Reuters West. 2015. p. 1345. ISBN 9780314642721.*
4. **^** Gordons Partnership Solicitors, Guarantees, Warranties and Indemnities – Spot the Difference, accessed 2 February 2023
5. **^** Johnson, M., Warranties in share purchase agreements, *Rocket Lawyer*, accessed 2 February 2023
6. **^** **a b** Hogg M. (2011). *Promises and Contract Law: Comparative Perspectives*, p. 48, Cambridge University Press.
7. **^** *Bagley, Constance; Dauchy, Craig (2018). The Entrepreneur's Guide to Law and Strategy (Fifth ed.). Boston, MA: Cengage Learning, Inc. pp. 313–315. ISBN 978-1-*

285-42849-9.

8. ▲ Warranties in Sales of Goods. LexisNexis Study Outlines.
9. ▲ **a b** 12 Reasons to Love the Magnuson–Moss Act. *Journal of Texas Consumer Law*. Reprinted with permission from the National Consumer Law Center.
10. ▲ Andreoni J. (2005). Trust, Reciprocity, and Contract Enforcement: Experiments on Satisfaction Guaranteed.
11. ▲ Lifetime Warranties. *Warranty Week*. WebCite Archive.
12. ▲ "Cisco Limited Lifetime Hardware Warranty Terms". Retrieved 2008-09-10.
13. ▲ "HP Networking warranty information". Retrieved 2011-08-26.
14. ▲ Maitland Chambers, AVRORA FINE ARTS INVESTMENT LTD V CHRISTIE, MANSON & WOODS LTD (2012), accessed 23 December 2022
15. ▲ Davis T. (2009). UCC Breach of Warranty and Contract Claims: Clarifying the Distinction. *Baylor Law Review*.
16. ▲ "Appliances - 247 Home Rescue". *247 Home Rescue*. Retrieved 26 June 2015.
17. ▲ Baker T, Siegelman P. (2013). Protecting Consumers from Add-On Insurance Products: New Lessons for Insurance Regulation.
18. ▲ **a b c** West G D, Lewis W B. (2009). Contracting to Avoid Extra-Contractual Liability—Can Your Contractual Deal Ever Really Be the "Entire" Deal? *The Business Lawyer*.
19. ▲ **a b** Primack MA. (2009), and it was relied upon by a party to enter into the contract. Representations, Warranties and Covenants: Back to the Basics in Contracts, and do not form part of the contract. *National Law Review*.
20. ▲ Ferara L N, Philips J, Runnicles J. (2007). Some Differences in Law and Practice Between U.K. and U.S. Stock Purchase Agreements Archived 2013-05-14 at the Wayback Machine. *Jones Day Publications*.
21. ▲ Telman J. (2012). Representations and Warranties. ContractsProf Blog.

22. ^ Moor, Tom (2016). "Are Extended Warranties on Appliances Worth It?". *Angies' List* (published 2016-07-22). Retrieved 16 January 2017. "Most manufacturers offer warranties for appliances that last from three months to up to one year."
23. ^ "Frigidaire, All about the Use & Care of your Refrigerator" (PDF). Electrolux. p. 20 . Retrieved 11 September 2016.
24. ^ **a b** "LG OWNER'S MANUAL FRENCH DOOR REFRIGERATOR". LG. pp. 55–58 . Retrieved 11 September 2016.
25. ^ **a b** "WHIRLPOOL® REFRIGERATOR WARRANTY" (PDF). Whirlpool. Archived from the original (PDF) on 20 December 2016. Retrieved 11 September 2016.
26. ^ "AMANA® MAJOR APPLIANCE WARRANTY" (PDF). Amana. Archived from the original (PDF) on 20 September 2016. Retrieved 11 September 2016.
27. ^ **a b** "GE Appliances, Refrigerators, Owner's Manual" (PDF). General Electric. p. 11. Retrieved 11 September 2016.
28. ^ "Refrigerator Product Info". Samsung. Retrieved 11 September 2016.
29. ^ "KITCHENAID® REFRIGERATOR WARRANTY" (PDF). KitchenAid. Archived from the original (PDF) on 20 December 2016. Retrieved 23 September 2016.
30. ^ "Certificate of Limited Warranty, Rheem and Ruud Water Heaters". ruud.com/product/ruud-residential-electric-water-heaters-professional-achiever-series-standard-electric/#specs-docs. 2014-09-01. Retrieved 2017-10-13.
31. ^ **a b** "Rheem Limited Warranty For the RHEEM®, RUUD®, Richmond®, Paloma®, and Sure Comfort® Residential Tankless Gas Water Heaters". ruud.com/product/ruud-condensing-tankless-professional-ultra-series-96-direct-vent-indoor/#specs-docs. Retrieved 2017-10-13.
32. ^ **a b** AO Smith (2017-08-01). "Limited Warranty [nor manufactured housing]" (PDF). hotwater.com/resources/product-literature/warranty-sheets/residential-electric/. Retrieved 2017-10-13.
33. ^ **a b c** "AO Smith Water Heaters, Residential Electric Warranty [Manufactured Housing]" (PDF). hotwater.com/resources/product-literature/warranty-sheets/residential-electric/. Retrieved 2017-10-13.
34. ^ **a b c** A. O. Smith. "Warranty" (PDF). hotwater.com/resources/product-literature/warranty-sheets/tankless/. Retrieved 2017-10-13.
35. ^ "What you need to know about warranty laws". Consumer Reports. 2013 Retrieved 11 September 2016.

- 36. [^] **Λ** What is a contract of insurance? Archived 2012-10-06 at the Wayback Machine. Financial Services Authority.
- 37. [^] **Λ** Simon Halberstam LLP, Difference between an IPR indemnity and an IPR warranty, published 2009, accessed 27 December 2022
- 38. [^] **a b** Wu S. (2012). Warranty Data Analysis: A Review. *Quality and Reliability Engineering International*.

External links

[edit]

- Federal Trade Commission: Warranty Information (United States)

Authority control databases Image not found or type unknown
Edit this at Wikidata

National

- Germany
- Czech Republic

Other

- Encyclopedia of Modern Ukraine

About Overhead Door Company of Joliet

Photo

Image not found or type unknown

Photo

Image not found or type unknown

Photo

Image not found or type unknown

Photo

Image not found or type unknown

Photo

Image not found or type unknown

Photo

Image not found or type unknown

Photo

Image not found or type unknown

Things To Do in Will County

Photo

Image not found or type unknown

Lake Renwick Heron Rookery Nature Preserve

4.6 (87)

Photo

Image not found or type unknown

Route 66 Experience Sign

3.7 (3)

Photo

Image not found or type unknown

Gemini Giant

3.4 (26)

Photo

Image not found or type unknown

Will County Historical Museum and Research Center

4.6 (23)

Photo

Fox Museum

4.6 (22)

Photo

Image not found or type unknown

Joliet Area Historical Museum

4.6 (679)

Photo

Image not found or type unknown

Pilcher Park Nature Center

4.7 (727)

Driving Directions in Will County

Driving Directions From Al's Steak House Restaurant to Overhead Door Company of Joliet

Driving Directions From Will County Law Library to Overhead Door Company of Joliet

Driving Directions From Clarion Hotel & Convention Center Joliet to Overhead Door Company of Joliet

Driving Directions From The Haley Mansion to Overhead Door Company of Joliet

https://www.google.com/maps/dir/Will+County+Law+Library/Overhead+Door+Company+of+Joliet,+Illinois/88.0843686,14z/data=!3m1!4b1!4m14!4m13!1m5!1m1!1sChIJ4ykaz7dmDogR54wls8!2m2!1d-88.0843686!2d41.5249227!1m5!1m1!1sChIJLWV_oV9hDogRGyjUaaoTEjk!2m2!1d-88.106331!2d41.5069115!3e0

https://www.google.com/maps/dir/Rockdale/Overhead+Door+Company+of+Joliet,+Illinois/88.1145036,14z/data=!3m1!4b1!4m14!4m13!1m5!1m1!1sChIJpaS5F9RjDogRcfaE!2m2!1d-88.1145036!2d41.5061419!1m5!1m1!1sChIJLWV_oV9hDogRGyjUaaoTEjk!2m2!1d-88.106331!2d41.5069115!3e2

https://www.google.com/maps/dir/First+American+Bank/Overhead+Door+Company+Joliet+IL+61701/88.1263608,14z/data=!3m1!4b1!4m14!4m13!1m5!1m1!1sChIJnV0USXRhDogRS488.1263608!2d41.5223227!1m5!1m1!1sChIJLWV_oV9hDogRGyjUaaoTEjk!2m2!1d-88.106331!2d41.5069115!3e1

https://www.google.com/maps/dir/Al%27s+Steak+House+Restaurant/Overhead+Door+Company+Joliet+IL+61701/88.1306966,14z/data=!3m1!4b1!4m14!4m13!1m5!1m1!1sChIJmbH_IJ5hDogR7v88.1306966!2d41.5218385!1m5!1m1!1sChIJLWV_oV9hDogRGyjUaaoTEjk!2m2!1d-88.106331!2d41.5069115!3e3

https://www.google.com/maps/dir/MainStay+Suites+Joliet+IL+61701/Overhead+Door+Company+of+Joliet/@41.519399,-88.126183,14z/data=!3m1!4b1!4m14!4m13!1m5!1m1!1sChIJL5w_8HZhDogRRDw88.126183!2d41.519399!1m5!1m1!1sChIJLWV_oV9hDogRGyjUaaoTEjk!2m2!1d-88.106331!2d41.5069115!3e0

Driving Directions From Gemini Giant to Overhead Door Company of Joliet

Driving Directions From Lockport Prairie Nature Preserve to Overhead Door Company of Joliet

Driving Directions From Joliet Area Historical Museum to Overhead Door Company of Joliet

Driving Directions From Joliet Iron Works Park to Overhead Door Company of Joliet

Driving Directions From Route 66 Park to Overhead Door Company of Joliet

Driving Directions From Joliet Iron Works Park to Overhead Door Company of Joliet

Driving Directions From Gemini Giant to Overhead Door Company of Joliet

https://www.google.com/maps/dir/Blues+Brothers+Copmobile/Overhead+Door+Company+of+Joliet,+IL+61701/88.0806,14z/data=!3m1!4b1!4m14!4m13!1m5!1m1!1sunknown!2m2!1d-88.0806!2d41.479953!1m5!1m1!1sChIJLWV_oV9hDogRGyjUaaoTEjk!2m2!1d-88.106331!2d41.5069115!3e0

https://www.google.com/maps/dir/Pilcher+Park+Nature+Center/Overhead+Door+Company+of+Joliet,+IL+61701/88.0219707,14z/data=!3m1!4b1!4m14!4m13!1m5!1m1!1sunknown!2m2!1d-88.0219707!2d41.5329846!1m5!1m1!1sChIJLWV_oV9hDogRGyjUaaoTEjk!2m2!1d-88.106331!2d41.5069115!3e2

https://www.google.com/maps/dir/Pilcher+Park+Nature+Center/Overhead+Door+Company+of+Joliet,+IL+61701/88.0219707,14z/data=!3m1!4b1!4m14!4m13!1m5!1m1!1sunknown!2m2!1d-88.0219707!2d41.5329846!1m5!1m1!1sChIJLWV_oV9hDogRGyjUaaoTEjk!2m2!1d-88.106331!2d41.5069115!3e1

https://www.google.com/maps/dir/Lincoln+Landing/Overhead+Door+Company+of+Joliet/@41.588497,-88.0583755,14z/data=!3m1!4b1!4m14!4m13!1m5!1m1!1sunknown!2m2!1d-88.0583755!2d41.5902263!1m5!1m1!1sChIJLWV_oV9hDogRGyjUaaoTEjk!2m2!1d-88.106331!2d41.5069115!3e3

https://www.google.com/maps/dir/Illinois+State+Museum-Lockport+Gallery/Overhead+Door+Company+of+Joliet/@41.588497,-88.0590432,14z/data=!3m1!4b1!4m14!4m13!1m5!1m1!1sunknown!2m2!1d-88.0590432!2d41.588497!1m5!1m1!1sChIJLWV_oV9hDogRGyjUaaoTEjk!2m2!1d-88.106331!2d41.5069115!3e0

https://www.google.com/maps/dir/Isle+A+La+Cache+Museum+Pavilion/Overhead+Door+Company+of+Joliet/@41.6396606,-88.0699946,14z/data=!3m1!4b1!4m14!4m13!1m5!1m1!1sunknown!2m2!1d-88.0699946!2d41.6396606!1m5!1m1!1sChIJLWV_oV9hDogRGyjUaaoTEjk!2m2!1d-88.106331!2d41.5069115!3e2

Reviews for Overhead Door Company of Joliet

Overhead Door Company of Joliet

Image not found or type unknown

Hector Melero

(5)

Had a really great experience with Middleton Overhead Doors. My door started to bow and after several attempts on me fixing it I just couldn't get it. I didn't want to pay on something I knew I could fix. Well, I gave up and they came out and made it look easy. I know what they are doing not to mention they called me before hand to confirm my appointment and they

showed up at there scheduled appointment. I highly recommend Middleton Overhead Doors on any work that needs to be done

Overhead Door Company of Joliet

Image not found or type unknown

Kelley Jansa

(5)

We used Middleton Door to upgrade our garage door. We had three different companies come out to quote the job and across the board Middleton was better. They were professional, had plenty of different options and priced appropriately. The door we ordered came with a small dent and they handled getting a new panel ordered and reinstalled very quickly.

Overhead Door Company of Joliet

Image not found or type unknown

Andrea Nitsche

(4)

Scheduling was easy, job was done quickly. Little disappointed that they gave me a quote over email (which they confirmed was for labor and materials), but when they finished it was just over \$30 more. Not a huge deal, but when I asked why, I was told they gave me an approx cost and it depends on what is needed. I get that in general, however, they installed the door and I gave them my address and pics of the existing prior to getting a quote. I feel like they could have been more upfront with pricing. And just a heads up, it was pricey... Had them change the weather stripping, from ringing my doorbell to pulling out my driveway when done was literally 20 mins, cost was just over \$260

Overhead Door Company of Joliet

Image not found or type unknown

Owen McCarthy

(5)

I called the office just by chance to see if there was an available opening for a service call to repair a busted spring. Unfortunately I didn't catch the name of the person who answered, but she couldn't have been more pleasant and polite. She was able to get a tech to my house in an hour. I believe the tech's name was Mike and he too was amazing. He quickly resolved my issue and even corrected a couple of things that he saw that weren't quite right. I would recommend to anyone and will definitely call on Middleton for any future needs. Thank you all for your great service.

Overhead Door Company of Joliet

Image not found or type unknown

Jim Chuporak

(5)

Received a notice the morning of telling me when to expect the men to come and put the door in. he was on time, answered all my questions, worked diligently in the cold. And did an absolutely awesome job. Everything was cleaned up, hauled away from the old door. I am extremely happy with the service I received from the first phone call I made through having the door put in. My wife and I are very, very happy with the door.

Evaluating Compatibility with Wifi Enabled Devices [View GBP](#)

Frequently Asked Questions

Will my existing garage door opener work with a Wi-Fi-enabled system?

It depends on the model of your current garage door opener. Many modern openers have built-in Wi-Fi or can be upgraded with compatible smart controllers. Check the manufacturer's specifications for compatibility.

What should I consider when choosing a Wi-Fi-enabled garage door opener?

Consider factors like ease of installation, app functionality, integration with other smart home devices, security features, and the range of connectivity offered by the system.

How do I ensure that my Wi-Fi signal reaches my garage for reliable operation?

You may need to extend your home's Wi-Fi network using extenders or mesh systems if your router is too far from the garage. A strong and stable connection is crucial for seamless operation.

Are there any security concerns with using a Wi-Fi-enabled garage door system?

Yes, security is important. Ensure that you use strong passwords, enable encryption settings on your network, and regularly update both your app and device firmware to protect against vulnerabilities.

Overhead Door Company of Joliet

Phone : +18157256077

City : Joliet

State : IL

Zip : 60436

Address : Unknown Address

Google Business Profile

Company Website : [**https://overheaddoorjoliet.com/garage-door-repair-romeoville.aspx**](https://overheaddoorjoliet.com/garage-door-repair-romeoville.aspx)

Sitemap

Privacy Policy

About Us