

20 Which of the following most of it consists of water?
 (a) Cell wall. (b) Mitochondria. (c) Nucleus. (d) Cytoplasm.

21 Which of the following structures has a transport function inside the living cell?
(a) Endoplasmic reticulum. (b) Mitochondria.
 (c) Chloroplast. (d) Sap vacuole.

22 Which of the following cells contains a large sap vacuole?
(a) A cell in bean plant. (b) Bacterial cell. (c) Fungal cell. (d) Hepatic cell.

23 Which of the following organelles has a storage function inside the living cell?
 (a) Mitochondria. (b) Vacuole.
 (c) Chloroplast. (d) Endoplasmic reticulum.

24 The opposite figure shows a plant cell, study it, then answer:

(1) Which of the following represents the energy-production centers in the cell?

- (a) (1). (b) (2).
(c) (3). (d) (4).

(2) Which of the following structures contains the genetic material?

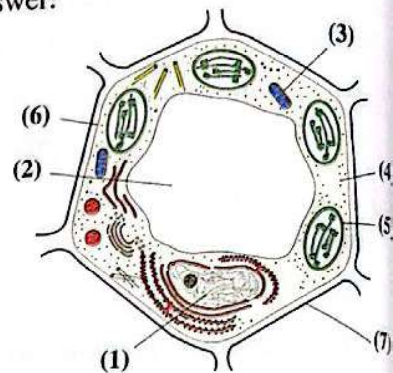
- (a) (1). (b) (2).
 (c) (1) & (6). (d) (2) & (4).

(3) Which of the following structures regulates the passage of substances from and to the cell?

- (a) (2). (b) (5). (c) (6). (d) (7).

(4) Which structure is considered a gel-like substance in the cell?

- (a) (1). (b) (4). (c) (5). (d) (7).



25 The figure in front of you illustrates an animal cell, study it, then answer:

(1) * Which of the following structures whose number decreases in the plant cell?

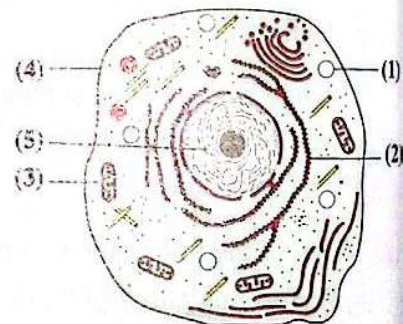
- (a) (1). (b) (2).
 (c) (4). (d) (5).

(2) Which of the following structures consists of a group of membranes?

- (a) (1). (b) (2).
 (c) (3). (d) (4).

(3) Which of the following structures controls the living cell activities?

- (a) (1). (b) (2). (c) (3). (d) (5).



- 26 Which of the following structures is usually located at the center of the animal cell?
(a) Nucleus. (b) Vacuole. (c) Mitochondria. (d) Plastid.

Water in living cells

- 27 From the inorganic molecules is/are
(a) carbohydrates (b) water (c) proteins (d) lipids
- 28 In mammals, the percentage of water is about % of the organism's body mass.
(a) 23 (b) 47 (c) 70 (d) 90
- 29 The percentage of water in blood plasma and other body fluids in mammals is about % of the body mass.
(a) 23 (b) 47 (c) 70 (d) 83
- 30 The percentage of water inside the mammal cells is about % of the organism's body mass.
(a) 23 (b) 47 (c) 60 (d) 80
- 31 Which of the following directly participate(s) in all the metabolic processes?
(a) Mineral salts. (b) Water.
(c) Lipids. (d) Carbohydrates.

Metabolism

- 32 Which of the following statements expresses a characteristic feature of the catabolic process ?
(a) It aims to store energy inside the cell till using it.
(b) It takes place in plant cells, but it doesn't take place in animal cells.
(c) The energy required for performing the vital functions of the cell is obtained through it.
(d) It takes place in animal cells, but it doesn't take place in plant cells.
- 33 Which of the following is applied to anabolic and catabolic processes respectively?
(a) Oxidation process / Reduction process.
(b) Consuming energy / Producing energy.
(c) Producing energy / Consuming energy.
(d) Breaking down of chemical bonds / Formation of chemical bonds.
- 34 Glucose sugar is broken down inside the cell through a process called
(a) excretion (b) digestion
(c) cellular respiration (d) photosynthesis