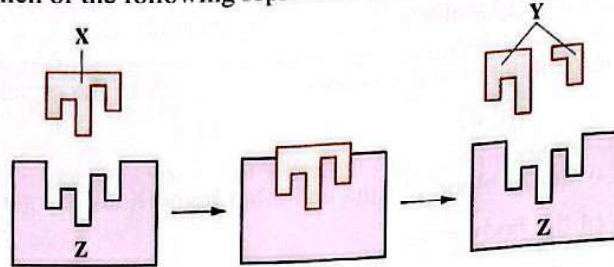


35 Which of the following are from the products of the glucose breakdown?

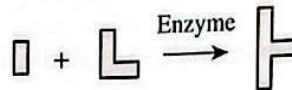
- (a) O₂ & Energy.
- (b) O₂ & Water.
- (c) CO₂ & O₂
- (d) Water & CO₂

36 The following figures represent a model for the action mechanism of an enzyme inside the human body, which of the following represents letters (X), (Y) and (Z) respectively?



- (a) Enzyme / Products / Substrate.
- (b) Enzyme / Substrate / Products.
- (c) Substrate / Enzyme / Products.
- (d) Substrate / Products / Enzyme.

37 The following figures represent a chemical reaction:



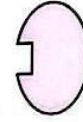
Which of the following figures represents the enzyme in this reaction?



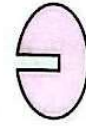
(a)



(b)

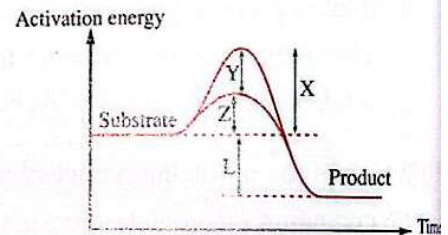


(c)



(d)

38 * From the opposite graph that shows the effect of the enzyme on the activation energy of a chemical reaction. Which of the following represents the arrow that illustrates the reduction in the activation energy, due to the addition of an enzyme?



- (a) X
- (b) Y
- (c) Z
- (d) L

39 The opposite figure represents one of the enzyme's properties, what is this?

- (a) Participating in the reactions without being consumed.
- (b) Increasing the reaction speed.
- (c) Specializing in the combination with a certain substance.
- (d) Decreasing the activation energy.

