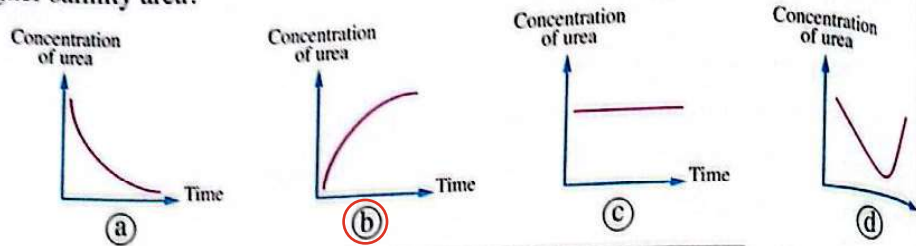


45 * Which of the following represents a similarity between *Paramecium* and Nile tilapia (bolti) fish?

- (a) The presence of contractile vacuole.
- (b) The evolution degree.
- (c) The ability to get rid of the excess water.
- (d) The method of getting rid of the excess water.

46 Which of the following graphs illustrates the change in urea concentration in the blood of a shark fish when it moves between two saltwater areas from a lower salinity area to a higher salinity area?



47 The osmotic pressure in the bodies of saltwater fish regarding the water they live in is

- (a) low, causing loss of water from their bodies
- (b) high, causing loss of water from their bodies
- (c) low, causing the entry of water to their bodies
- (d) high, causing the entry of water to their bodies

48 Why shark fish have a higher concentration of urea than freshwater fish?

- (a) Because urea is used as an energy source in their cells.
- (b) Because they swallow large amounts of seawater to compensate the water loss.
- (c) Because they need to excrete large amounts of salts through the gills.
- (d) Because urea helps in the osmotic pressure balance inside their bodies.

49 Which of the following expresses the correct arrangement for osmotic pressure?

- (a) Fresh water < Solutions inside saltwater fish < Solutions inside freshwater fish < Seawater
- (b) Fresh water < Solutions inside freshwater fish < Solutions inside saltwater fish < Seawater
- (c) Seawater < Solutions inside freshwater fish < Solutions inside saltwater fish < Fresh water
- (d) Seawater < Solutions inside saltwater fish < Solutions inside freshwater fish < Fresh water

50 The contractile vacuole in *Amoeba*, *Paramecium* and *Euglena* is an example for

- (a) functional adaptation
- (b) behavioral and structural adaptations
- (c) anatomical adaptation
- (d) osmotic and behavioral adaptations