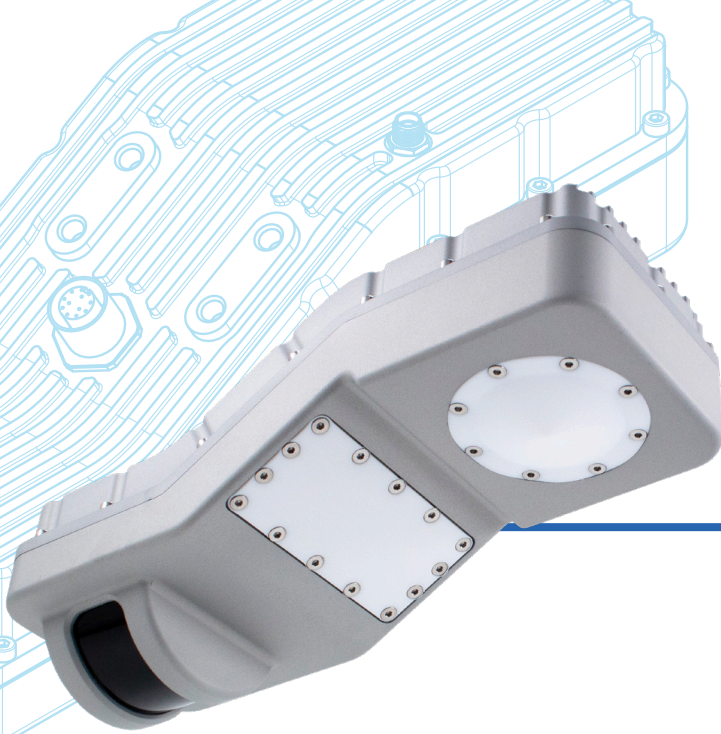


NON-CONTACT OPEN CHANNEL FLOW VELOCITY & LEVEL METER + LIDAR CHANNEL SCANNER FX200



Applications

- Early flood warning systems
- Flow monitoring in irrigation channels
- Accurate discharge monitoring in rivers
- Sewage and waste water discharge measurement

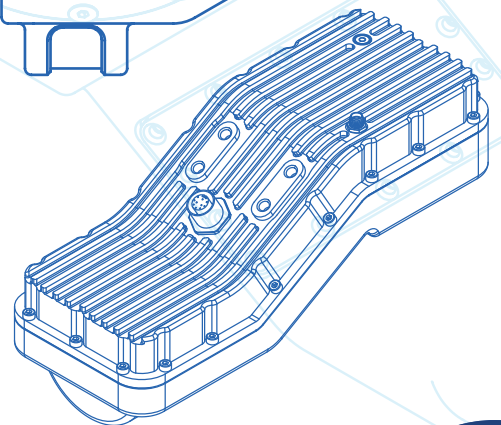
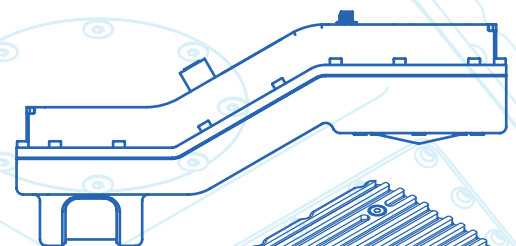
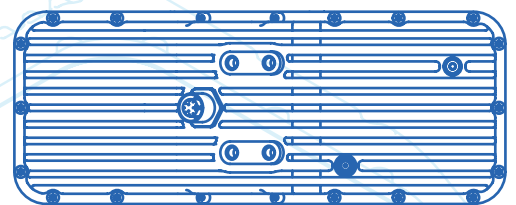
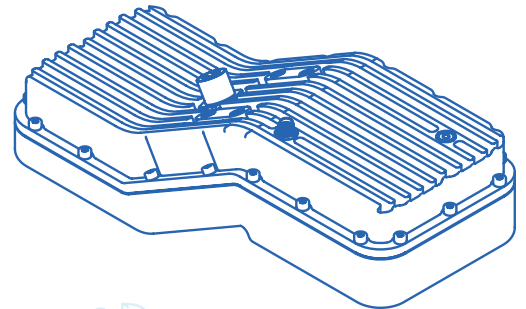
Product Description

The Geolux FX200 is an integrated instrument utilizing advanced FMCW 4D surface velocity radar and FMCW water level radar meter, and a LiDAR-based river channel scanner. Designed for non-contact measurement applications, the FX200 enables rapid deployment above water surfaces while minimizing maintenance requirements.

The FX200 is based on the advanced 4D radar processing that delivers superior performance compared to conventional Doppler-based surface velocity radars. While traditional Doppler sensors are susceptible to measurement degradation from ambient interference, precipitation, and structural vibration, the FX200's signal processing architecture ensures consistent, high-accuracy velocity measurements under all environmental conditions.

Calculation of the total flow discharge is internally implemented within the instrument by combining surface velocity measurement, water level measurement, and a the configured cross-section of the river or channel. The cross-section of the river or channel can be automatically determined and updated by an on-board LiDAR scanner, eliminating the need for manual measurements of the channel cross-section.

- Contactless measurement of surface velocity, water level and river channel profile
- Integrated discharge (flowrate) calculation
- 4D radar processing increases sensitivity while eliminating environmental disturbances
- Robust, compact, IP68 aluminium or stainless steel enclosure



FX200

Detailed Specifications

Detection Distance	15 m / 30 m / 35 m
Speed Range	0.02 m/s to 16 m/s
Speed Resolution	0.001 m/s
Speed Accuracy	1% of measured value (in full measurement range)
Level Resolution	1 mm
Level Accuracy	± 2 mm
Sampling Rate	1 sps
IP Rating	IP68
Interfaces	RS-232 / NMEA RS-485 / Modbus RTU SDI-12
Connector	M12 circular 12-pin
Input Voltage	9 to 27 VDC
Power Consumption	1100 mW operational 30 mW standby
Maximal Current	< 750 mA
Operating Temperature Range	-40°C to +85°C
Operating Humidity Range	0 – 100% RH

FCC & CE **APPROVED**
MADE IN **EU**

