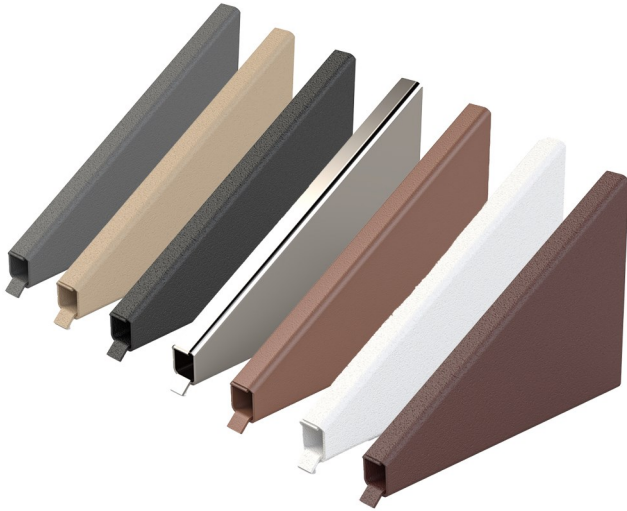


Technical Data Sheet

Non-combustible Metal Weep Vent

April 2023

PRODUCT



INSTALLATION

- Wall weep vents should be used whenever water could collect inside a cavity wall, such as over external lintels or whenever a cavity or chimney tray is installed.
- Weep vents should be placed directly on top of the base of a cavity tray or DPC or on the front flange of the lintel.
- Weep vents fit perpendicular between brick or block course vertically
- Care should be taken to ensure the wall weep vent is kept clear of mortar and does not become blocked. This is particularly important at the back of the weep which could be blocked by mortar dropping from above.

USES

- For use in external walls
- For use with high rise buildings
- Provides drainage for cavity
- For use with ICON cavity & chimney trays

FEATURES & BENEFITS

- A1 non-combustible stainless steel weep
- Integral 4mm concealed outlet minimising ingress of nesting insects
- Provides ventilation and drainage
- Used in new or refurbishment work
- Quick and easy to install
- Available in stainless steel or non organic baked on colours, buff, terracotta, black, rust brown, white & anthracite
- Typically installed at not greater than 900mm c/c
- Suitable for high rise buildings requiring non combustible materials
- Complies with all relevant Building Regulations

Product Details

Size	H15-65xL100xW10mm
Material	Natural mill finish stainless steel
Colour	Stainless steel, buff, terracotta, black, rust brown, white & anthracite

