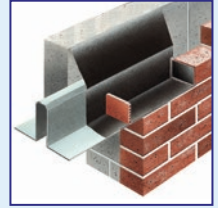


# Special Cavity Trays

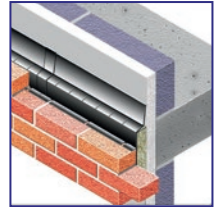
## Lintel Cavity Trays

- For use over steel lintels in external cavity walls
- Fully self supported cavity tray system
- Build independently from inner leaf
- Full range of cut to length sizes available
- No waste, no site fabrication, easy to handle and install
- Must be combined with stopends and weep holes



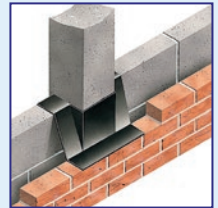
## Acoustray Perimeter Cavity Stop

- To prevent the transmission of flanking noise between floor levels and external wall junctions
- Can be used as a fire stop with integrated cavity tray
- Saves installation problems as it can be installed independently of Internal walls
- No break in insulation, no cold bridging, no secondary fixings
- Ideal for refurbishment work as only outside leaf requires removal



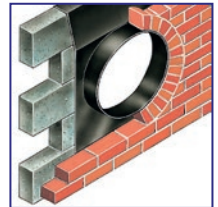
## Purpose Made Cavity Trays

- To substitute the cutting, moulding and sealing of a DPC when forming cavity trays, angles, stop ends and column cloaks
- One piece seamless moulding eliminates the need for site fabrication to prevent errors through poor workmanship
- Manufactured to suit exact customer requirements
- Easy to handle, flexible, tough, durable and puncture resistance



## Door and Window Cavity Trays

- Used around the openings of an external door or window with an arched top or circular external window
- On external walls built from brick, block or stone as well as timber frame construction of any thickness and any cavity width
- One piece seamless moulding eliminates the need for site fabrication
- Manufactured to suit the exact customers requirements
- Any size type of radius can be fabricated



## Masonry Support System

- Direct fit over masonry support systems to form DPC cavity trays
- Can be tailored to suit all types of masonry support systems
- Supplied in 20m rolls to reduce jointing and available in a range of pre creased roll widths 450mm, 600mm and 1000mm
- Once the cavity tray has been folded it maintains its profile, but still has the flexibility of a traditional system

