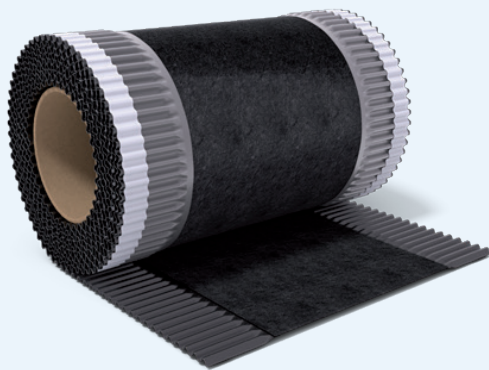


# Dry Ridge System

## FIXING INSTRUCTIONS

- ✓ mechanical fixing system
- ✓ secures ridge tiles to the roof
- ✓ suitable for both new and refurbished roofs
- ✓ quick and easy to install
- ✓ compatible with most roof tiles and ridges
- ✓ provides 5000mm<sup>2</sup> ventilation

### Box contents



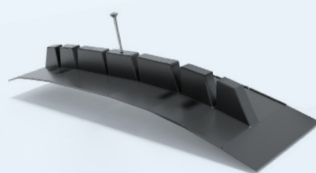
6m x 320mm ventilated ridge roll  
providing 5000mm<sup>2</sup>/m airflow



10 No. batten  
support brackets



13 No. 100mm fixing screws  
and ridge union clips

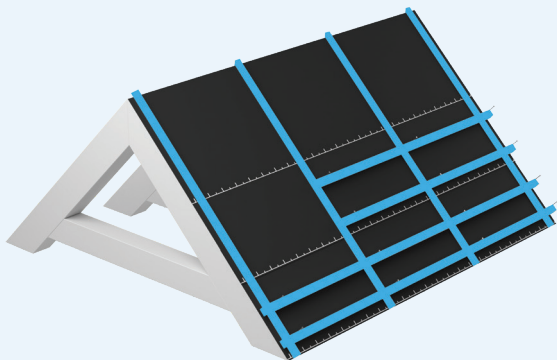


13 No. universal ridge union pieces

Tested to BS 8612: 2018: Dry fixed ridge, hip, and verge systems for slating and tiling

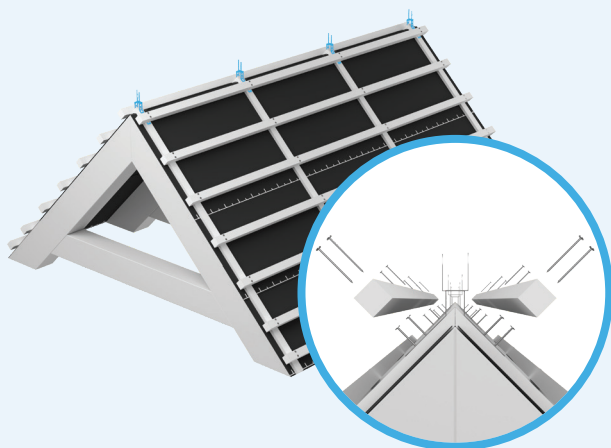
# 1

Install the roof underlay and battens in accordance with manufacturers instructions. Leave underlay short at the ridge on both sides by 5-30mm. Do not fix top tiling batten at this point.



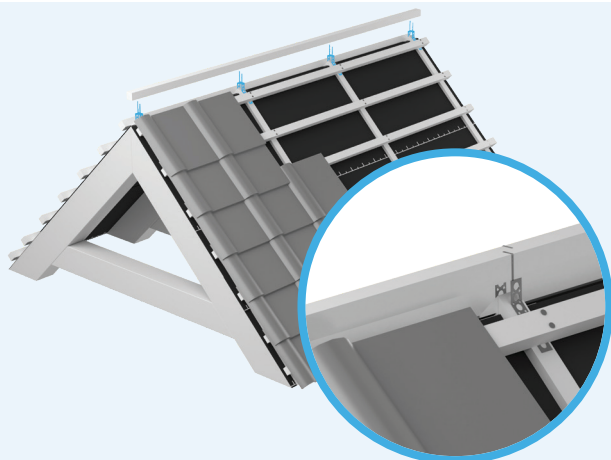
# 2

Attach the ridge batten bracket to the rafters or trusses with appropriate fixing nails. Build up the ridge batten to required height and install between the bracket using 25mm thick battens. Fix the top tiling batten as normal leaving a 10mm gap at the top for air movement.



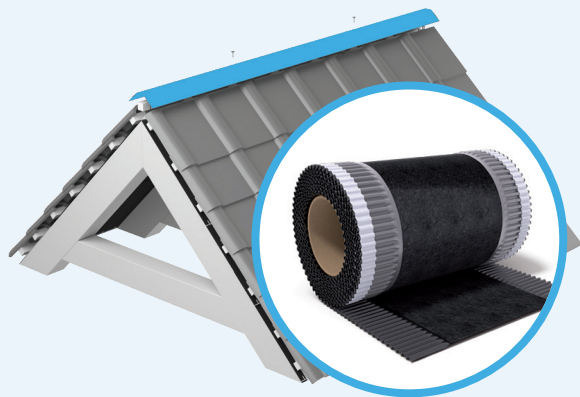
# 3

Bend the batten support bracket over the ridge batten and secure using appropriate nails/screws. Complete the tiling or slating as normal and in accordance with manufacturers recommendations.



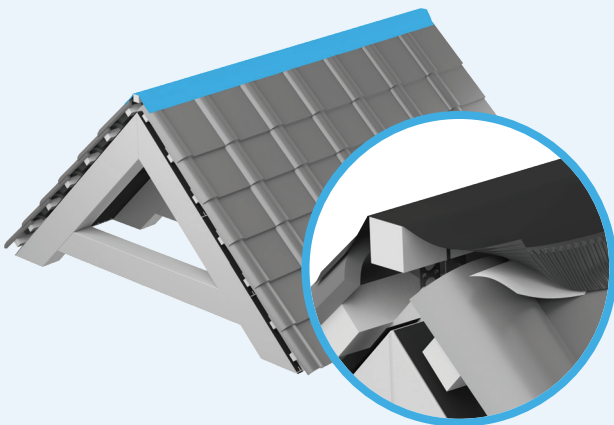
# 4

Roll out ventilated ridge roll centrally across the length of the ridge batten and secure using nails or staples every 1m. All joints in the ridge roll must be overlapped by min. 75mm.



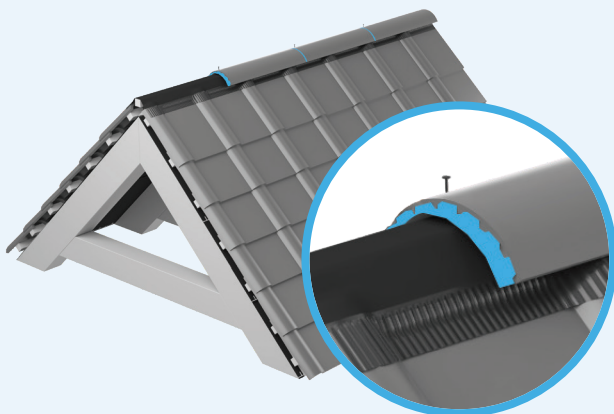
# 5

Tiles must be clean and dry before removing the release paper for the butyl adhesive strip. Peel off the protective tape from adhesive strip and press firmly down into the tile or slate surface. Repeat on both sides of the roof.



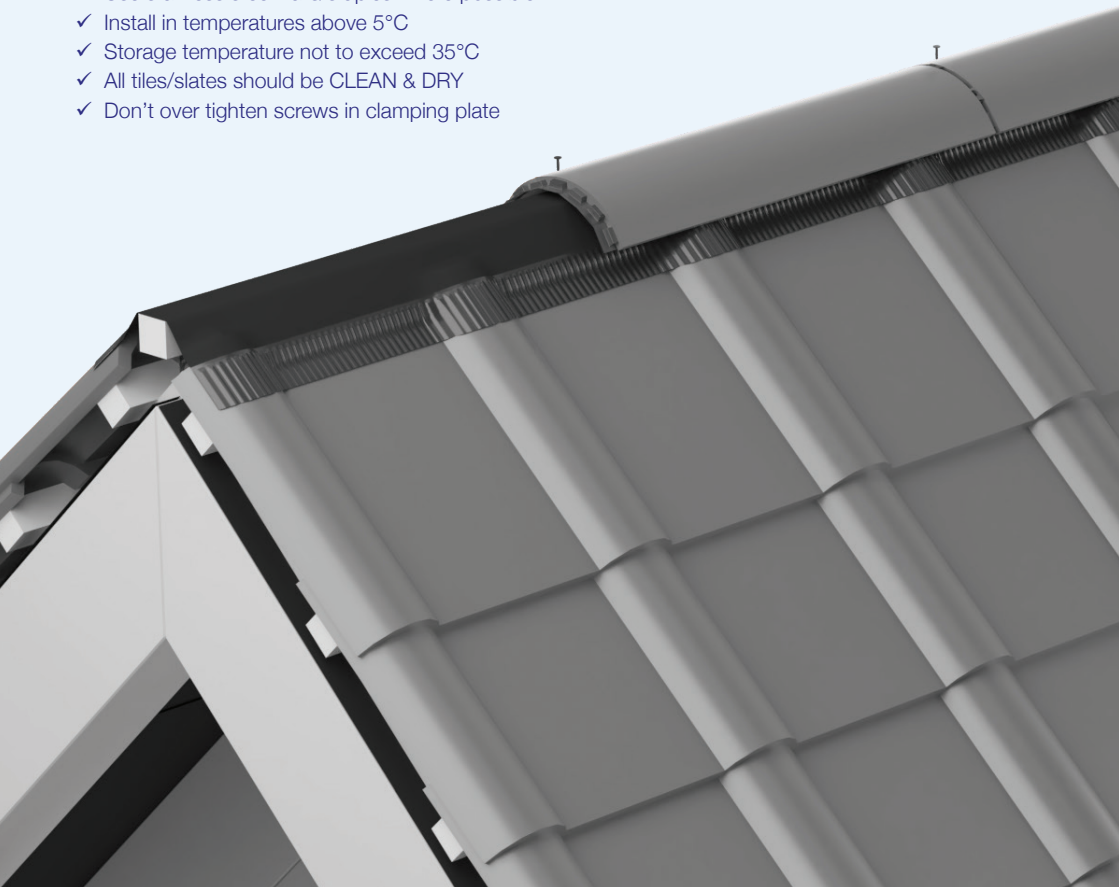
# 6

Loosely fix first ridge tile to roof ridge batten through pre drilled holes. Slide ridge union piece into the open end of the ridge. Slide the next ridge tile into the open end of the ridge union and press the outer clips firmly in place. Screw the centre plate between ridges and don't over-tighten. Continue along the ridge until the end. Secure last ridge through predrilled holes.



### Recommendations

- ✓ Use stainless steel nails/staples where possible
- ✓ Install in temperatures above 5°C
- ✓ Storage temperature not to exceed 35°C
- ✓ All tiles/slates should be CLEAN & DRY
- ✓ Don't over tighten screws in clamping plate



### ICON Building Products

Unit 6/7, Block 14G, Grants Road, Greenogue Business Park, Rathcoole, Co. Dublin

**Phone:** +353 (0)1 4019728 **Fax:** +353 (0)1 4019739 **Email:** [info@iconbp.ie](mailto:info@iconbp.ie) **www.**[iconbp.ie](http://www.iconbp.ie)