

Fitting Instructions

Inter-Loc Horizontal Cavity Trays

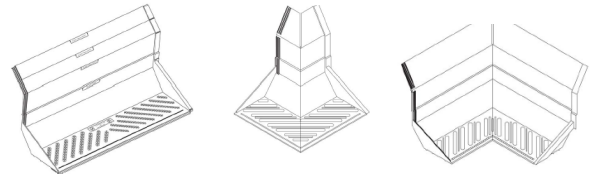
2021

Introduction

Used in a cavity wall at the abutment of a flat, lean to or mono pitched roof. The Inter-loc cavity tray is a rigid plastic moulding that is designed to be self-supporting, with lengths set out to suit 2 or 4 brick lengths. The base is built into the outer leaf and the rear part of the tray will stand in the cavity without any additional support. All trays are supplied with Code 4 lead. Suitable for brick, Block and stonework construction.

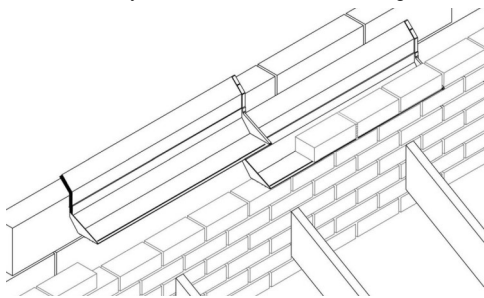
Components available for Inter-loc cavity tray system

1. Inter-Loc 2 (2 brick 450mm long)
2. Inter-Loc 4 (4 brick 900mm long)
3. External corner 90°
4. Internal Corner 90°



Setting Out

1. Ensure cavity trays are installed in the correct position. Horizontal trays should be positioned between 75-150mm above the finished roofline. Horizontal trays need to be installed along the full length of the abutment, while also allowing for min 150mm overhang past abutment.

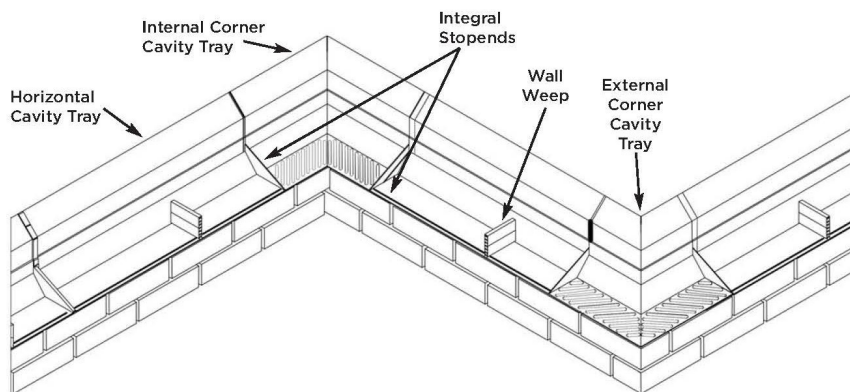


2. Inter-loc trays have a permanent stopend at each end of tray and are used to interlock one another creating water seal. Ensure weep vent is fitted in the centre of each tray in the mortar joint to discharge excess water. **Keep the cavity trays and weep holes clean and free from mortar droppings.**



3. Trays are installed along the abutment working from right to left. Start at a minimum 150mm before the start of the roofline to form overhang. Interlock the cavity tray together along the required run plus at least 150mm beyond the abutting roof.

4. Corner Tray - Used to maintain the integrity of the tray. The corner unit will not always work with full brick/block and it may be necessary to cut accordingly. It is recommended to locate the corner tray first and work away with the inter-loc tray. For applications that work into a corner it may be necessary to cut down the Inter-loc horizontal cavity tray to the required length to allow for the corner to overlap. With the integrated stop end removed it will be necessary to seal the joint between the corner tray and the horizontal tray with appropriate sealing tape.



5. Unleaded Cavity Tray - During the installation of unleaded trays the bricklayer should rake out the mortar below the front edge to a depth of 25mm before the mortar has set, providing a channel for the lead. The correct design and installation of the lead work is the installers responsibility. If in doubt please refer to the lead sheet association.

IMPORTANT REMINDER

- Make sure the front edge of the tray is positioned flush with the front of external masonry
- Always bed cavity trays onto fresh mortar, they must never be dry bedded
- Cavity tray and weep holes must be kept clean from mortar droppings

Severe Weather Exposure

In severe exposed areas additional weep holes may be required. Make sure the weep holes are not blocked with mortar. Pay particular attention to the workmanship on the lead flashing.

Cavity Wall Insulation:

The specification of insulation must be clear and it is recommended that the insulation must not transmit moisture across the cavity to inner leaf. Horizontal cavity trays may be compromised with loose full fill blown insulation. Full fill polyurethane boards will need to be cut to accommodate the Horizontal cavity tray. Please consult our technical department when using full fill insulation.

