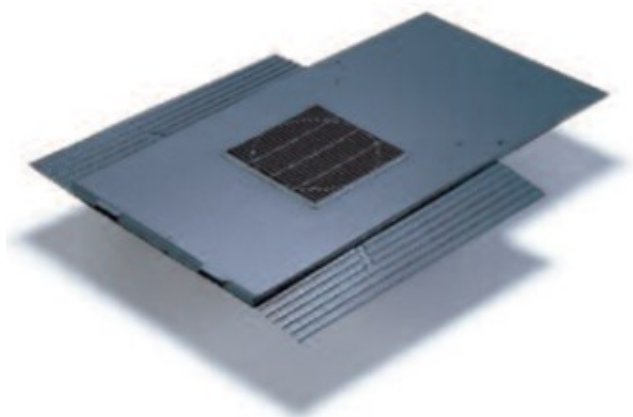


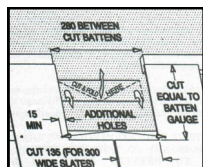
# Technical Data Sheet

## ISVHB In-line Slate Ventilator

### PRODUCT

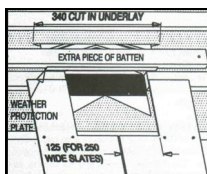


### INSTALLATION



1. Cut batten as shown (280mm) between rafters
2. Cut the two slates directly below the ventilator.  
250mm slates—2x125 wide cut outs  
300mm slates—2x135 wide cut outs

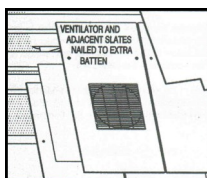
Also provide additional fixing holes in each cut slate



3. Cut the underlay to receive the throat of the vent. Cut as diagram folding back the underlay as shown.

4. Fix extra batten above the cut batten as shown

5. Cut a 340mm long slot in the underlay to accept the underlay protector which should pass under the extra batten and into the slot.



6. Neatly trim the slate above the ventilator to clear the grille.
7. Continue slating as normal.

### USES

- For slate roof ventilation, soil vent pipes or mechanical extract ventilation (with pipe adaptor)
- For new or existing roofs.
- Suitable for roof pitches between 20° and 60°
- For use at high level or low level where the roof construction does not allow eaves or ridge vents
- Suitable for all natural and man made slate

### FEATURES & BENEFITS

- Can be installed as required during slating process
- Efficient, unobtrusive and easy to install
- Driving rain and deluge rain resistance
- AA fire rating to BS476:Part3:2004
- Integral 4mm insect screen
- Colour blending available if required
- Complies with current Building Regulations; BS5250 & BS5534, ICP2

### PRODUCT DETAILS

Free Area	10,000mm <sup>2</sup> per vent
Size	600x300mm
Material	Manufactured from ABS & VO fire retardant material
Colour	Blue/Black. Colour blending available if required
Code	ISVHB
Suggested spacing	5000mm <sup>2</sup> /m = 2.0m 10 000mm <sup>2</sup> /m = 1.0m 25 000mm <sup>2</sup> /m = 0.4m
Airflow resistance when used as SVP	54m <sup>3</sup> /hr (15 lt/sec) 10Pa 108m <sup>3</sup> /hr (30lt/sec) 42Pa 216m <sup>3</sup> /hr (60lt/sec) 162Pa

