

# MR50 Monovent

## Technical Data Sheet

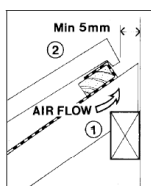
### PRODUCT



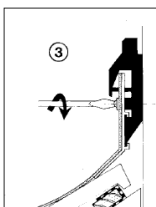
### INSTALLATION

The unit comprises of two PVC-U extruded sections supplied in 1.22m lengths complete with spacers, screws, washers and lead clips. Aluflash apron flashing for dressing over the tiles below is supplied (lead available to order). A lead or Aluflash cover flashing (not supplied) must be installed with Monovent, in accordance with the recommendations of the lead sheet association.

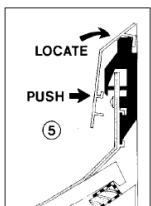
1. The top batten should be positioned to allow the top edge of the tile to finish just short of the wall to provide the required 5mm gap. The felt is returned over the top of the batten so not to obstruct the 5mm gap



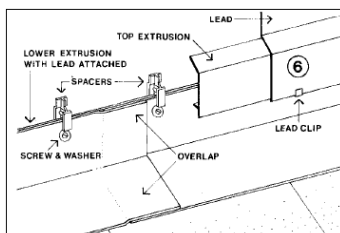
2. Line up the spacers, already attached to the lower section with the punched holes. Mark through to the wall each of the fixing positions, bore, plus and screw to wall. Offer up second section, ensuring 100mm lead overlap. Leave 5mm gap between lengths to allow for thermal movement



3. When all fitted dress lead over roof tiles. Fit top extrusion by locating the top hook onto the spacer and spring the lower hook by pushing hard on the front centre vertical face.



4. The lead flashing can now be dressed over the top extrusion. The lead should finish flush with bottom edge and is secured by clips provided.



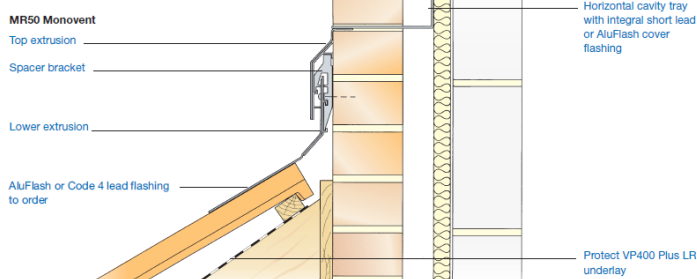
### USES

- Provides unobtrusive high-level ventilation to top edge abutments of lean to roofs, ensuring a continuous ventilation gap of 5000mm<sup>2</sup>/m

### FEATURES & BENEFITS

- Provides effective resistance to driving and deluge rain
- Prevents large insect ingress
- Quick and easy to install
- Does not effect the normal laying of the roof covering
- Must be used in conjunction with eaves ventilation
- Suitable for installation under dormer window sills when insulation is at rafter position.
- Can be used to comply with roof space ventilation requirements of Building Regulations Approved Documents

Fixing position of MR50 Monovent varies according to roof pitch



### PRODUCT DETAILS

<b>Ventilation Area</b>	5000mm <sup>2</sup> /m
<b>Size</b>	1220mm long x 5 per box
<b>Material</b>	PVC-U Apron Flashing - Aluflash
<b>Colour</b>	Grey

