

((SENSONEO))

Manage waste smarter

Smart Waste Management Solution
for cities and businesses

((SENSONEO))

Sensoneo is a global enterprise-grade smart waste management solution provider that **enables cities and businesses to manage their waste cost-efficiently, be more environmentally responsible and improve the wellbeing of people.**

Through its unique smart waste management technology, Sensoneo is redefining the way waste is managed. The solution combines unique ultrasonic Smart Sensors that monitor waste real-time with sophisticated software **providing cities and businesses with data-driven decision making.**



Smart Sensors

Monitoring waste via ultrasonic IOT sensors

Smart Waste Management System

Configuration, monitoring and managing of waste



Smart Route Planning

Route optimization intelligence navigation & fleet, depots and landfills management

Smart Analytics

Understand your waste and make data driven decisions

Smart Sensors

Sensoneo designs, develops and manufactures its own sensors. They are ultrasonic, robust, water and shock resistant, and have a lifespan over 10 years.

The sensors are fully functioning in a **wide temperature range**, and are set to measure **from 15 cm to 255 cm**. The sensors are flexible and can monitor **any type of waste**: mixed waste, paper, plastics, glass, clothing, bio waste, liquids, electronics, metal in **containers of various types** and sizes.

The sensors also monitor the temperature in the container, the GPS position, and are equipped with built-in BLE technology. If required, the sensors can be outfitted with a built-in fire alarm and a vertical position sensor, which indicates if the container has tipped over.



sigfox

GSM

LoRaWAN™

NB-IoT

CAT-M

((S))

Smart hardware

Single Sensor

Measurement	Single ultrasonic beam
Measurement range	15 - 255 cm
Dimensions in mm (h/w/d)	50 / 120 / 54
Weight	150 g
Mounting options	Screws / Clench / Rails
Power supply	Up to 7 years
Battery replacement	Yes
Mesh network	Yes, slave
Connectivity	LoRaWAN / Sigfox
Tilt alarm	Yes
Data ownership	Customers
Applications	Operator / Driver / Citizen



((S))

Smart hardware

Double Sensor

Measurement	Double ultrasonic beam
Measurement range	15 - 255 cm
Dimensions in mm (h/w/d)	63 / 200 / 87
Weight	690 g
Measurement fail protection	Weighted average
Mounting options	Screws / Clench / Rails
Power supply	Up to 7 years
Battery replacement	Yes
Mesh network	Yes, slave and master
Connectivity	GSM
Tilt alarm	Yes
Data ownership	Customers
Applications	Operator / Driver / Citizen



**Environmentally Responsible**

Reduce emissions and make businesses more eco-friendly.

**Save Costs**

Optimize logistics and make work processes more effective.

**Reduce OPEX**

Reduce costs related to fueling, vehicle wear and working hours.

**Improve health & safety**

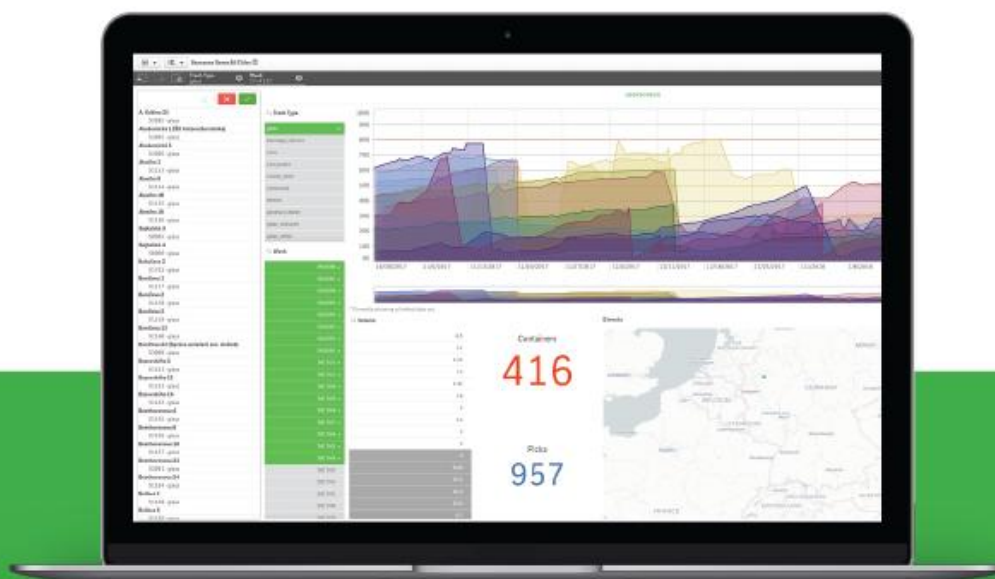
Bring cleanliness and improvement of life for citizens.

Sensoneo Smart Waste Management System

The data from Smart Sensors is processed and stored in the Smart Waste Management. Smart Waste Management System allows you to setup and configure sensors, monitor real-time fill level in bins, see planned and executed collection routes, deal with reports from citizens and manage your waste smarter.

Sensoneo Smart Analytics

Truly understand your waste with Smart Analytics. Learn how much and how fast city or business produces waste, what is the separates and general waste ratio, how efficiently you use bins and collection routes. You can make data-driven decisions about capacity, separates and general waste ratio, and location of the bins.

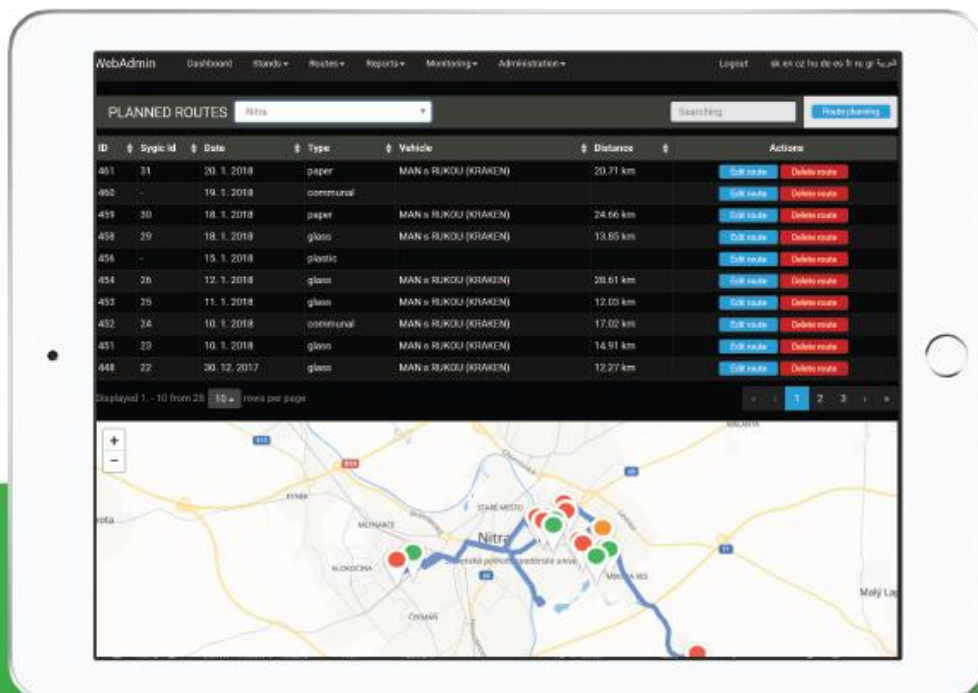


Sensoneo Smart Route Planning

Smart Route Planning enables an automated management of the waste collection routes based on detailed pre-defined data related to waste collection vehicles, depots and landfills.

This tool allows the operator to manage the collection routes by one click and utilize collection vehicles and FTEs the most efficient way in terms of time and costs.

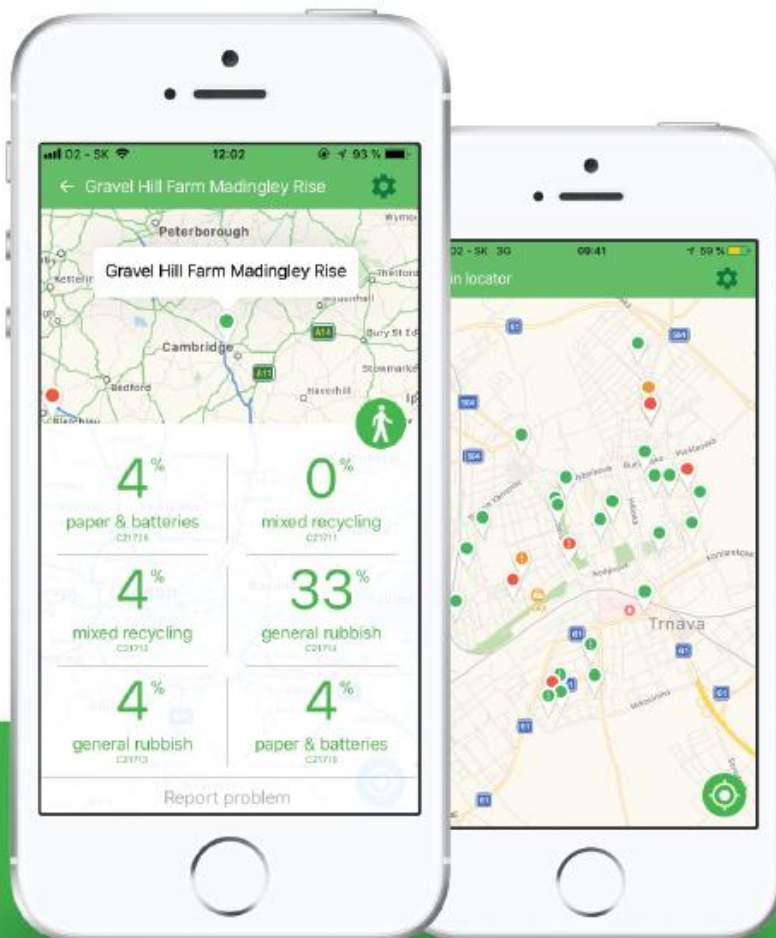
Smart Route Planning navigates vehicles via shortest, completely safe and fully accessible routes.



Citizen App

Sensoneo Citizen App informs citizens of the nearest available empty bin and enables them to be more environmentally responsible. By providing real-time feedback, they can help reduce overflowing and messy bins, making the city greener, cleaner and free of litter.

Download Sensoneo Citizen App and get access to real-time data about the waste management in your area.



Who Do We Help

- Cities and municipalities
- Waste management companies
- Recyclers and consultants
- Circular economy consultation companies and experts
- Different businesses (Heavy, Logistics, Facility, Retail)





**Sensoneo enables
a world that is
green, clean and
free of litter.**

Sensoneo

www.sensoneo.com

info@sensoneo.com

HQ - SLOVAKIA

Science Park, Ilkovicova 8

Bratislava, Slovakia