



# 2026 ENTRY

---

## A LEVEL SUBJECTS

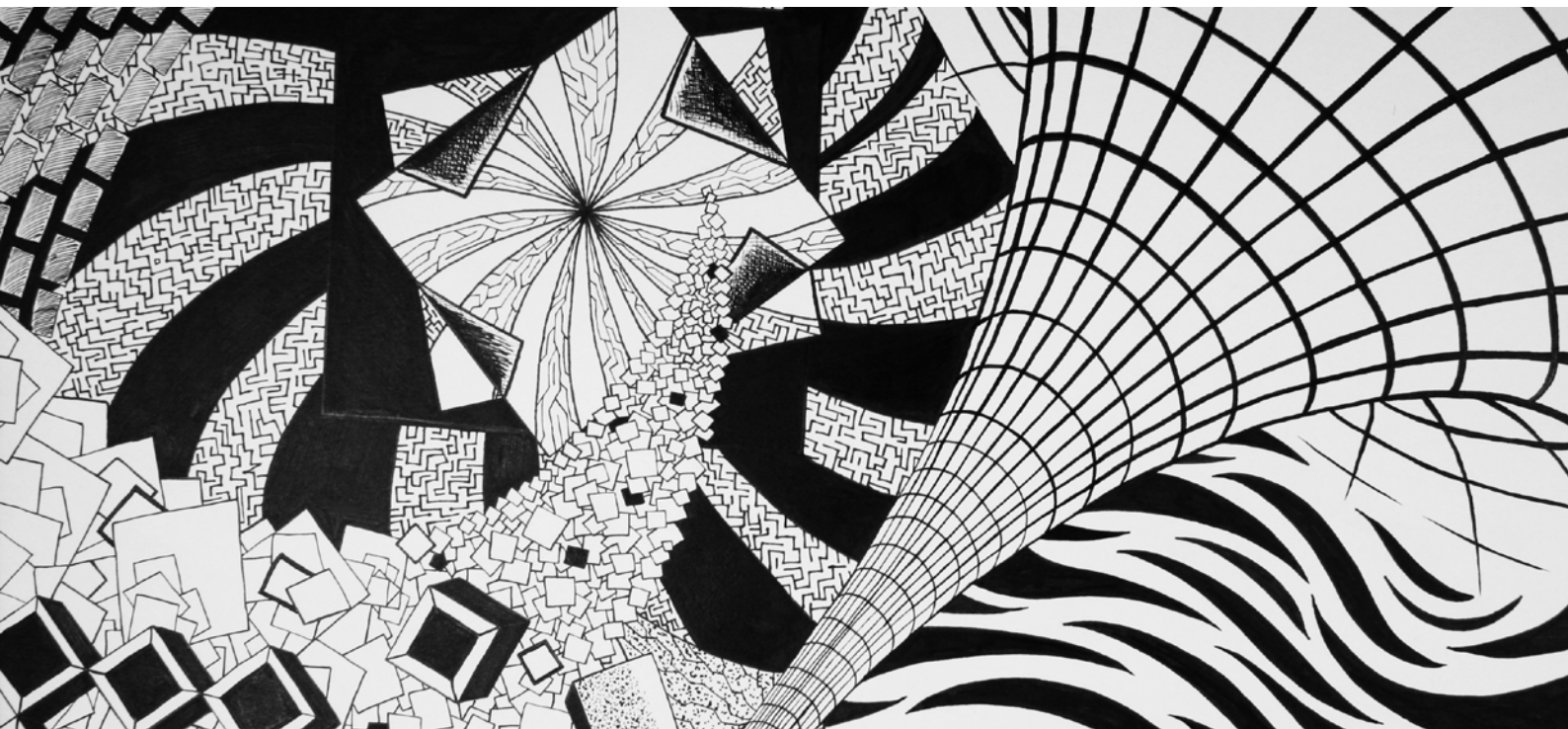


TOWNLEY  
EST 1937  
GRAMMAR SCHOOL

# 2026 ENTRY

## A LEVEL SUBJECTS

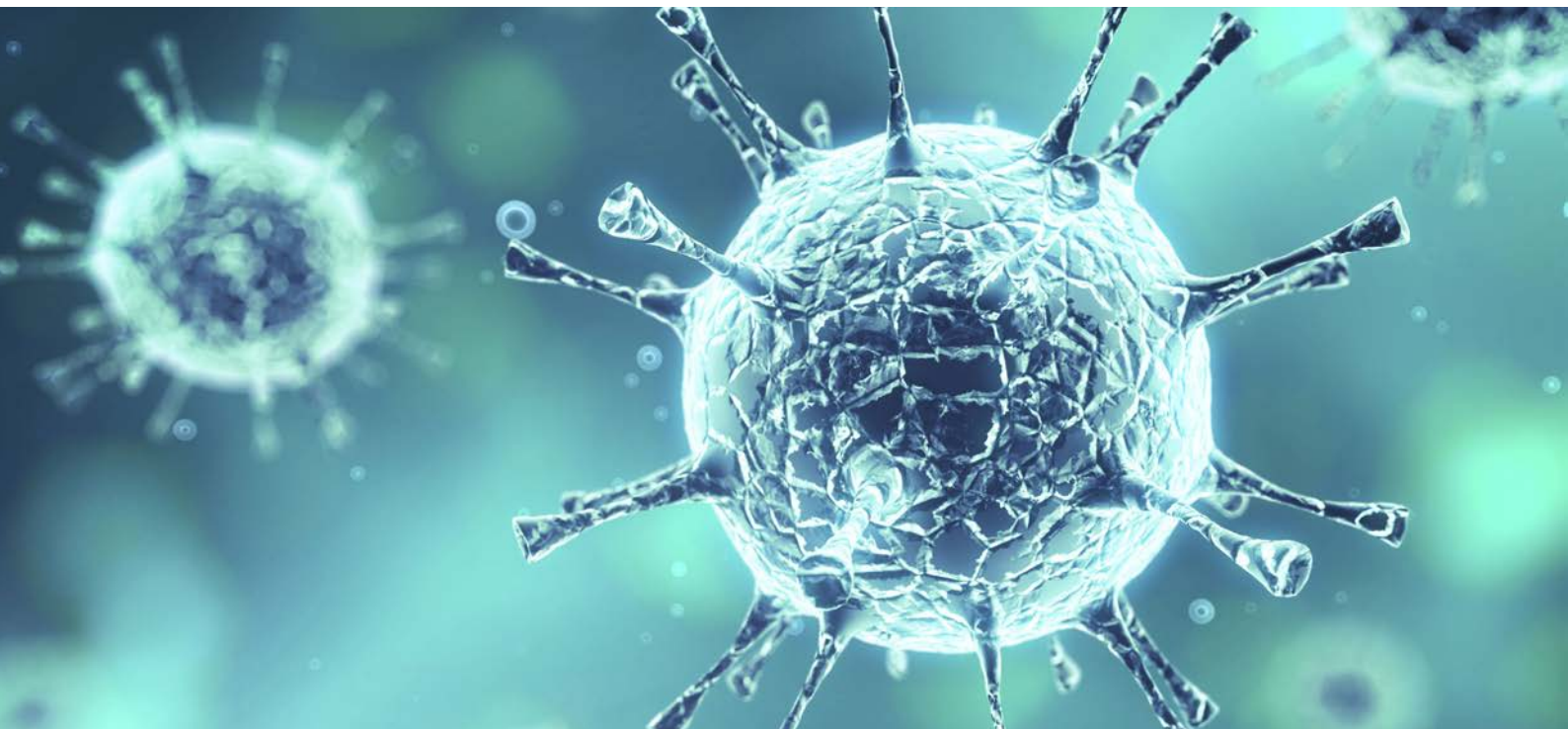
Art and Design.....	3	German.....	17
Biology.....	4	History.....	18
Chemistry.....	5	Latin.....	19
Classical Civilisation.....	6	Mathematics.....	20
Computer Science.....	7	Music.....	21
Dance.....	8	Physical Education.....	22
Drama and Theatre.....	9	Philosophy and Ethics.....	23
Economics.....	10	Physics.....	24
English Literature.....	11	Politics.....	25
Extended Project		Product Design.....	26
Qualification.....	12	Psychology.....	27
Film Studies.....	13	Sociology.....	28
French.....	14	Spanish.....	29
Further Mathematics.....	15	The Curriculum.....	30
Geography.....	16	Townley Traits.....	31



## Art and Design

Art and Design A-Level is a challenging and exciting opportunity for those students keen on furthering their GCSE skills. Students will start the year by engaging in some “Induction to A Level” workshops before they embark on an exciting theme based enquiry. In Year 12 students will be given a set theme which is designed to give them scope to engage creatively, while also developing their skills in analysis and understanding. The Year 12 course allows students to explore a range of ideas, techniques and processes in a more experimental way than they will have experienced at GCSE. Students are encouraged to attend Life Drawing as part of their A Level course, and will be given the opportunity to attend in-house extra-curricular Life Drawing sessions. In the Upper Sixth, students continue with one chosen line of enquiry from the previous portfolio of work, and this will form a large part of their Personal Investigation. The Personal Investigation will include an essay of approximately 3000 words.

All students will be expected to visit galleries on a regular basis, work independently on their investigations inside and outside of the classroom, and keep a well-documented sketchbook for each unit of work.



## Biology

A Level Biology will give you an exciting insight into the contemporary world of Biology. It covers the key concepts of Biology, with the practical skills being integrated throughout the course. This combination of academic challenge and practical focus makes the prospect of studying A Level Biology highly appealing. You will learn about the core concepts of Biology and about the impact of biological research and how it links to everyday life. You will learn to apply your knowledge and to solve problems in a range of unfamiliar contexts, whilst studying the six modules required for this course: Development of Practical Skills; Foundations in Biology; Exchange and Transport; Biodiversity, Evolution and Disease; Communication, Homeostasis and Energy, and Genetics, Evolution and Ecosystems.

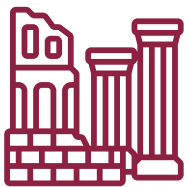




## Chemistry

The course gives learners many opportunities to develop the fundamental skills needed to understand the nature of Chemistry. All students are taught by two teachers who divide the specification between them on a topic basis, each exploring different key concepts of Advanced Physical, Organic and Inorganic Chemistry. Within the six modules, the topics covered include spectroscopy, kinetics, equilibria and acids in Physical Chemistry. Inorganic Chemistry includes d-block elements, ligands and the Periodic Table. Organic Chemistry explores different functional groups, understanding mechanisms of reactions and organic synthesis.

Chemistry is a highly analytical and practical subject. It is useful to have strong mathematical skills in order to achieve good understanding of the A level course. Practical skills are embedded throughout the specification and learners are required to develop a range of practical skills throughout the course in preparation for the final written examinations. This qualification gives students opportunities to use a wide range of apparatus and techniques to develop and demonstrate the required specific practical skills.

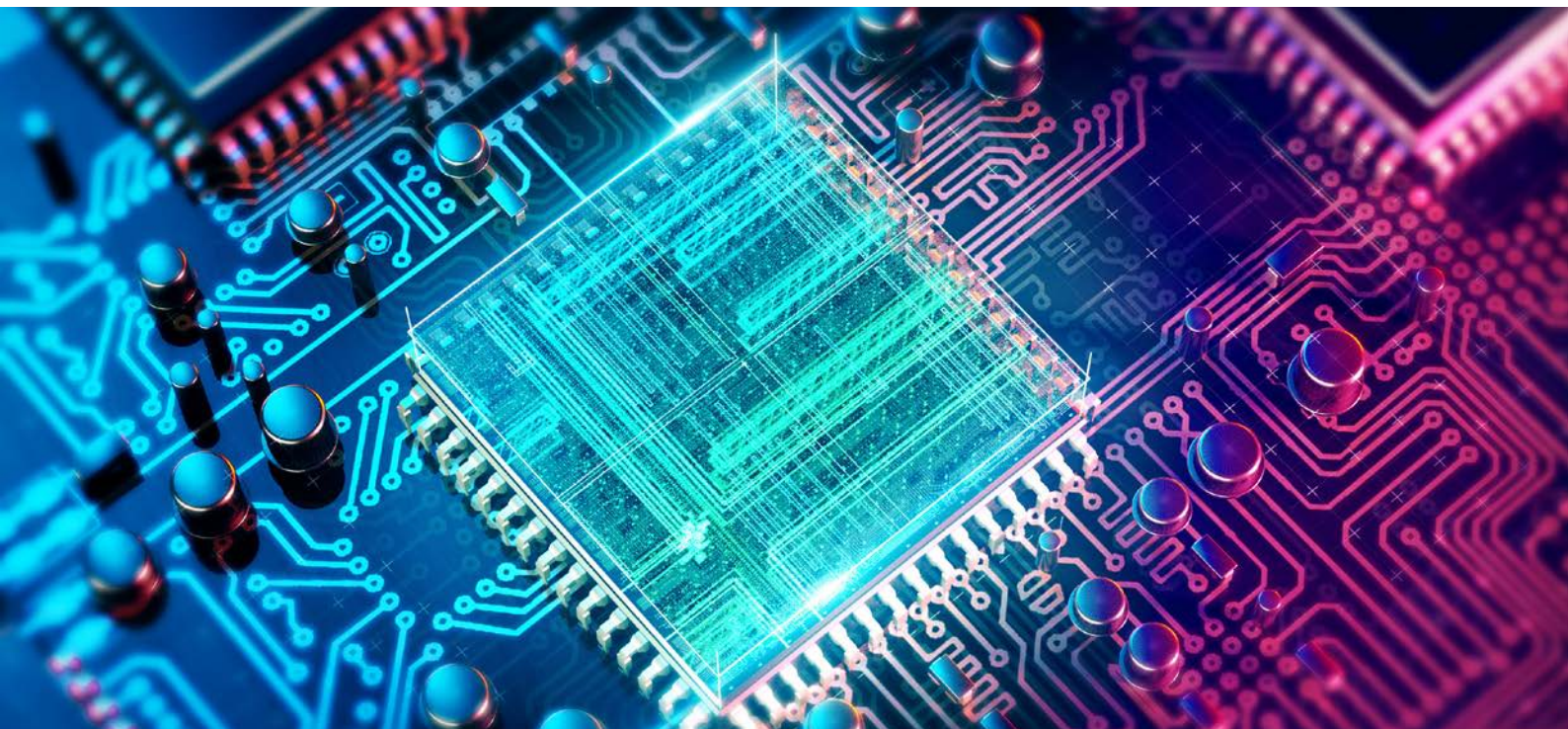


## Classical Civilisation

Classical Civilisation focuses on the societies of ancient Greece and Rome. It is a wide ranging subject, involving the study of literature, artefacts, philosophy, and ancient social context. You will study three modules across two years. “The World of the Hero” allows you to study two epic poems, the *Odyssey* (Greek) and the *Aeneid* (Roman). These poems both take place after the mythological Trojan War, and chart how two very different heroes make their way in the world after a war that lasted ten years and destroyed an entire people. By comparing the two poems, you will gain a deep understanding of the similarities and differences between Greek and Roman culture and storytelling.

“Imperial Image” is concerned with propaganda and communications – topics that are as relevant to our world today as they were 2,000 years ago. You will have the opportunity to learn about Augustus, the first emperor of Rome, and how he used literature, art, architecture and coinage to manipulate the Roman world into accepting his dictatorship. The final module on offer is “Love and Relationships”, which takes a philosophical as well as a literary approach, allowing you to investigate ancient ideals and realities of love in Greece and Rome.





## Computer Science

Through the study of Computer science at A Level, students will have the opportunity to apply the academic principles learned in the classroom to real-world systems. The course covers the fundamental concepts of Computer Science, including: abstraction, decomposition, logic, algorithms and data representation. Students will recognise how to analyse problems in computational terms through the practical experience of writing programs to do so. It's an intensely creative course combining invention and excitement, requiring the capacity to think innovatively, analytically, logically and critically. The ability to understand the relationships between different aspects of Computer Science is beneficial, in addition to mathematical skills, which are embedded throughout the content of the three components.

Students are assessed through two written papers, Component 01 "Computer Systems" provides a sound basis in topics such as data representation, hardware, software and systems architecture and Component 02 "Algorithms and Programming" further develops programming skills with increasing complexity. Students will be given an opportunity to enhance and consolidate these techniques/knowledge within Component 03 "The Programming Project", where learners analyse, design, develop, test, evaluate and document a program, written in a suitable programming language.



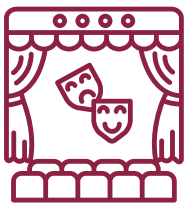
## Dance

A Level Dance is a dynamic qualification which encourages students to develop their creative, physical, emotional and intellectual capacity. Knowledge, understanding and skills will be developed and demonstrated within performance, choreography and critical engagement with their own work and the study of two specific areas of study. The study of professional works within the areas of study promotes the integration of theory and practice and underpins students' own approaches to both performance and choreography.

The A Level Dance specification requires students to develop, demonstrate and articulate practical and theoretical knowledge, understanding and experience of:

- technical and performance skills
- the process and art of choreography
- the interrelationship between the creation, presentation and viewing/  
appreciation of dance works
- the development of dance placed within an artistic and cultural context
- professional dance works and the significance of these works
- subject specific terminology and its use.





## Drama & Theatre

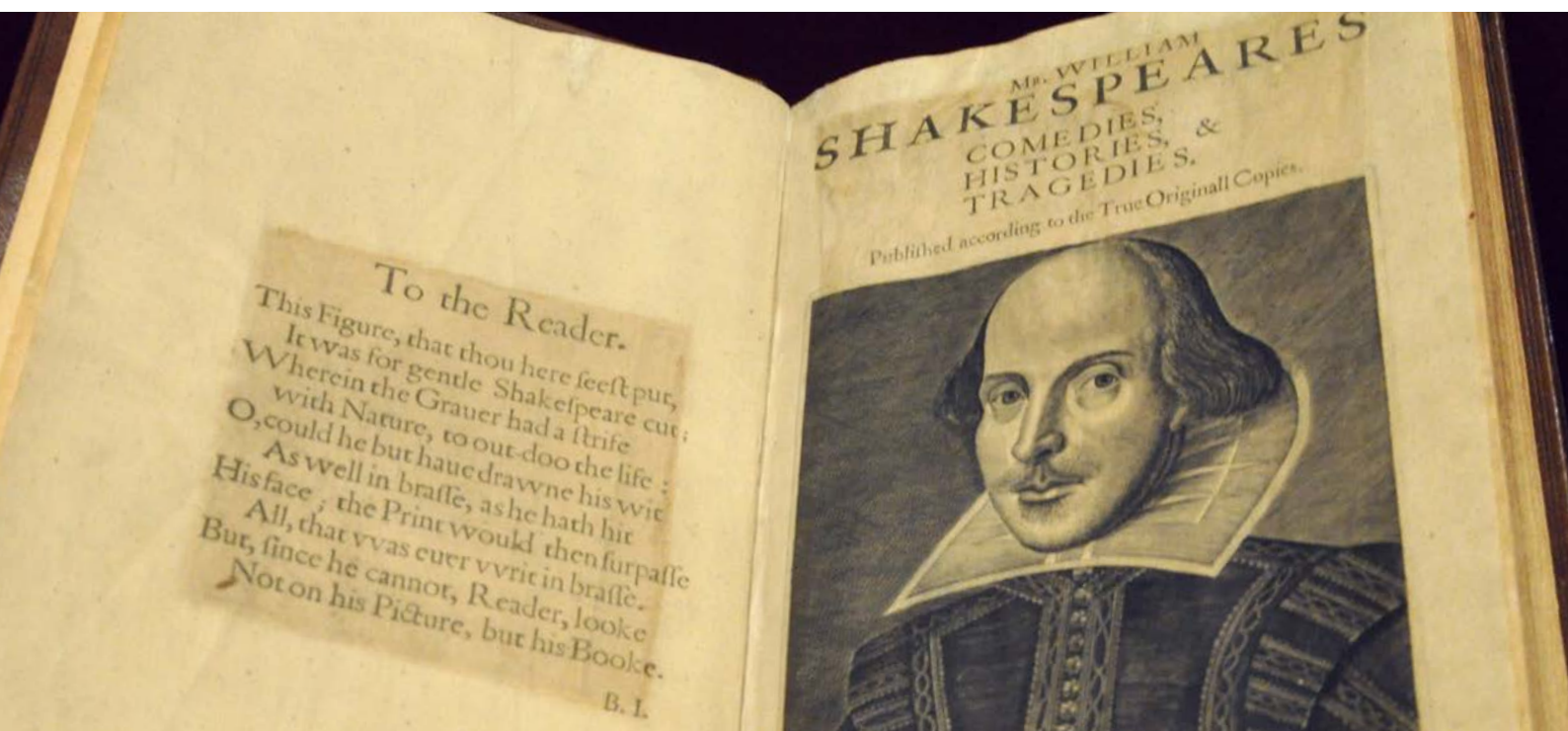
A Level Drama and Theatre emphasises practical creativity alongside research and theoretical understanding. Students learn through experience, seeing theatre and making theatre for themselves. Students are introduced to a wide range of theatrical styles and contexts as they explore plays practically, devise and work on performances. Students choose to develop as a performer, designer (lighting, sound, set, costume, puppets), director or a combination of these. Whichever option they choose, students will gain many invaluable skills, both theatrical and transferable, to expand their horizons. All the students are encouraged to participate in all extracurricular opportunities and trips, be prepared to take risks practically and have a curiosity to explore how the world works.



## Economics

Economics is a challenging subject that requires strong analytical and evaluative skills for essays, and mathematical skills for recognising trends in and interpreting data. The most important skill for success in Economics A Level is to be able to apply orthodox economic theory to a scenario, identify what it is about the scenario that is unorthodox, and subsequently recognise the limitations of conventional economic analysis. Essentially an interrogative mind is the key to success for every Economics student. The A Level comprises of four themes, and culminates in three exam papers. Themes 1 and 3 focus on microeconomics – that is a detailed study of the inner workings of firms, industries and individual consumer behaviour. Themes 2 and 4 make up the macroeconomic component. This involves studying the economy of individual countries, and international economic relationships. There is one microeconomics exam paper, one macroeconomics exam paper and one synoptic paper which potentially has elements of every theme. All exams are taken at the end of the Upper Sixth, and there is no coursework component.





## English Literature

English Literature is a highly academic and challenging A Level. It encourages students to read widely and independently; engage critically and creatively with a substantial body of texts; develop and effectively apply their knowledge of literary analysis and evaluation; explore the contexts of the texts they are reading and others' interpretations of them; and undertake independent and sustained studies to deepen their appreciation and understanding of English literature. Component 1 (Drama) explores the genre of Tragedy in Tennessee Williams'

'A Streetcar Named Desire' and William Shakespeare's Othello. Component 2 (Prose) compares 'Wuthering Heights' by Emily Bronte with 'Mrs Dalloway' by Virginia Woolf, focusing on the theme of 'Women in Society'. Component 3 (Poetry) students study pre1900 poetry (Keats or Romantics) and compare an anthology of modern poetry to an unseen text. Finally, their coursework asks them to compare a studied novel with a text of their choice.





## Extended Project Qualification

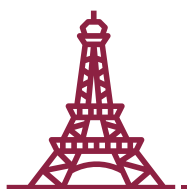
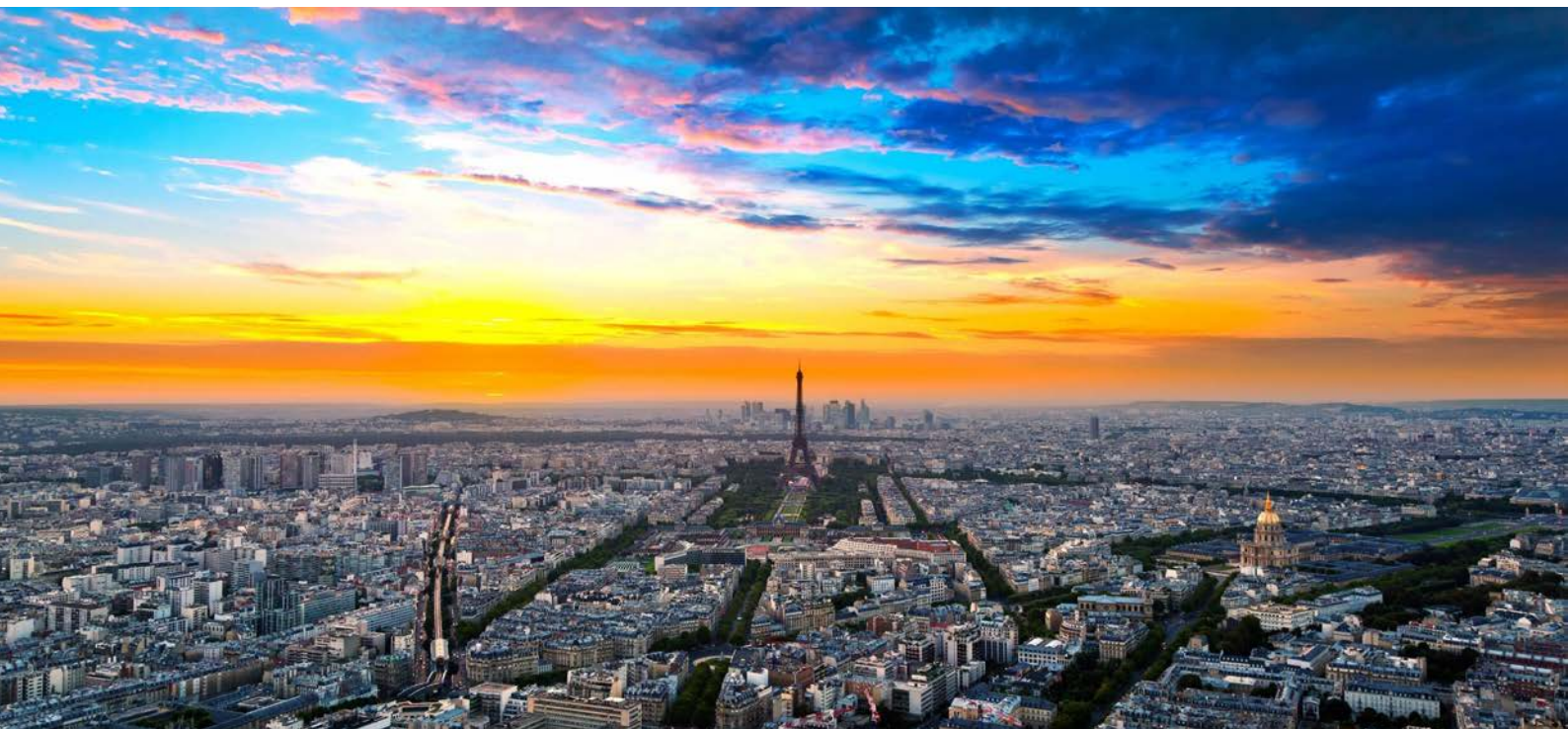
Townley offers students the opportunity to study the Extended Project Qualification (EPQ) which is a fantastic course to undertake alongside A Levels. The course is 1 year in duration and is completed in year 12. The Extended Project is a single piece of work of a student's choosing that requires evidence of project planning, independent research and self-motivated study. It is accredited as a stand-alone qualification for A Level students and provides them with excellent preparation for university-level study and may help boost their UCAS application. Not only does it enhance a UCAS application it also allows them to demonstrate their passion and enthusiasm for a subject of their choosing, however niche! The EPQ is truly individual and allows students to create a unique project that reflects their personality – something universities will appreciate.



## Film Studies

Film is one of the main cultural innovations of the 20th century and a major art form of the last hundred years. It is a powerful and culturally significant medium and as such Film Studies A Level makes an important contribution to the curriculum, offering the opportunity to investigate how film works both as a medium of representation and aesthetically. Students will be introduced to a wide variety of films in order to broaden their knowledge and understanding of film, the significance of the art form and its social, cultural, political and historical contexts.

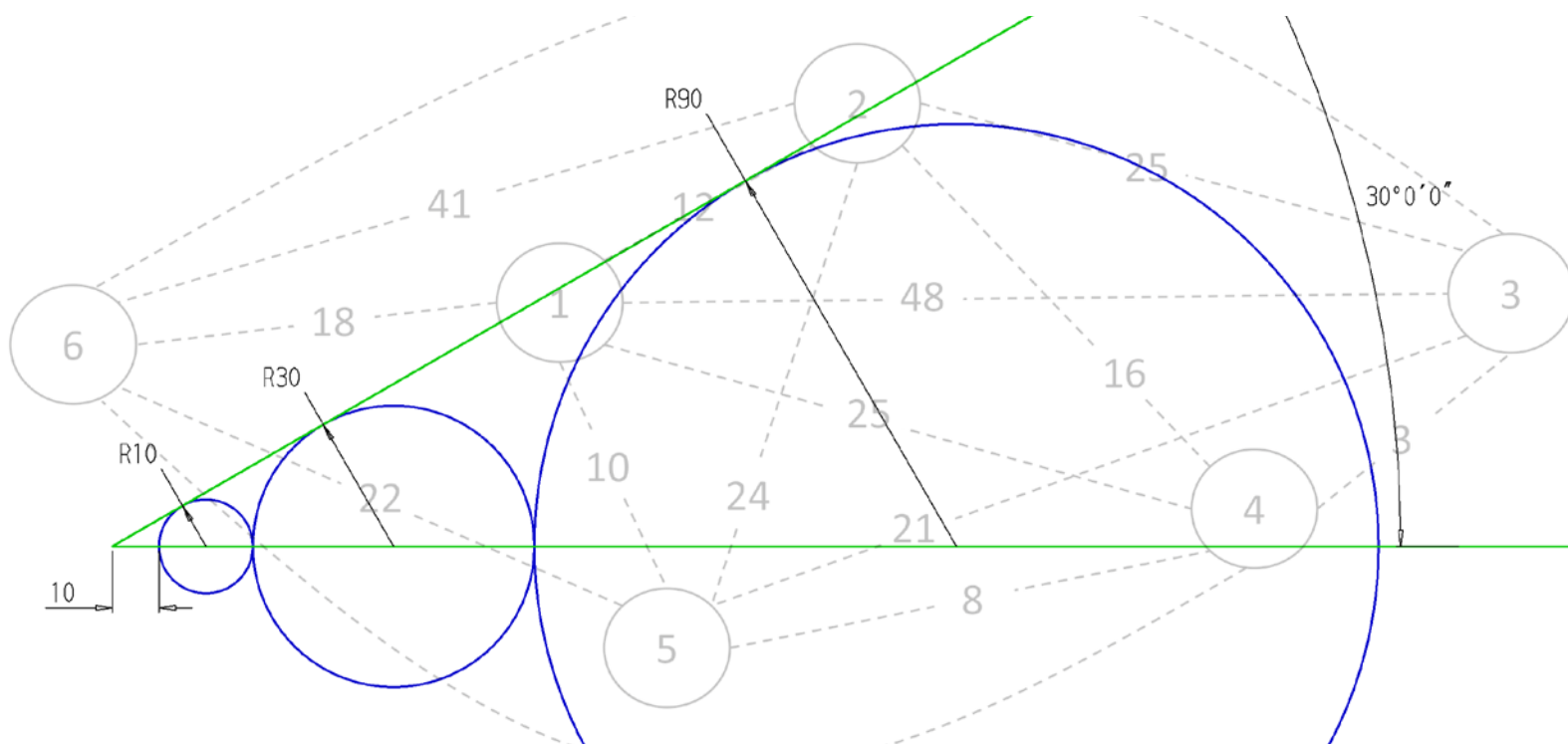
Students therefore critically analyse and evaluate mainstream American films from the past and the present as well as a range of recent and contemporary British films, American independent films and global films in a variety of languages. The historical range of film represented in those films is extended by the study of silent film and significant film movements so that learners can gain a sense of the development of film from its early years to its still emerging digital future. Studies in documentary, experimental and short films add to the breadth of the learning experience. Practical film-making production work is a crucial part of this specification and is integral to learners' study of film.



## French

We currently offer a two-year course in French. Throughout the two years, students develop an awareness and understanding of contemporary society, cultural background and heritage of France and French speaking countries. Students learn to listen, read as well as respond to a variety of spoken and written texts which include authentic materials. In class and with the French assistant, students are encouraged to use the French language accurately to express facts and ideas, and to present explanations, opinions and information in both speech and writing. Students are assessed by examination at the end of the Upper Sixth.



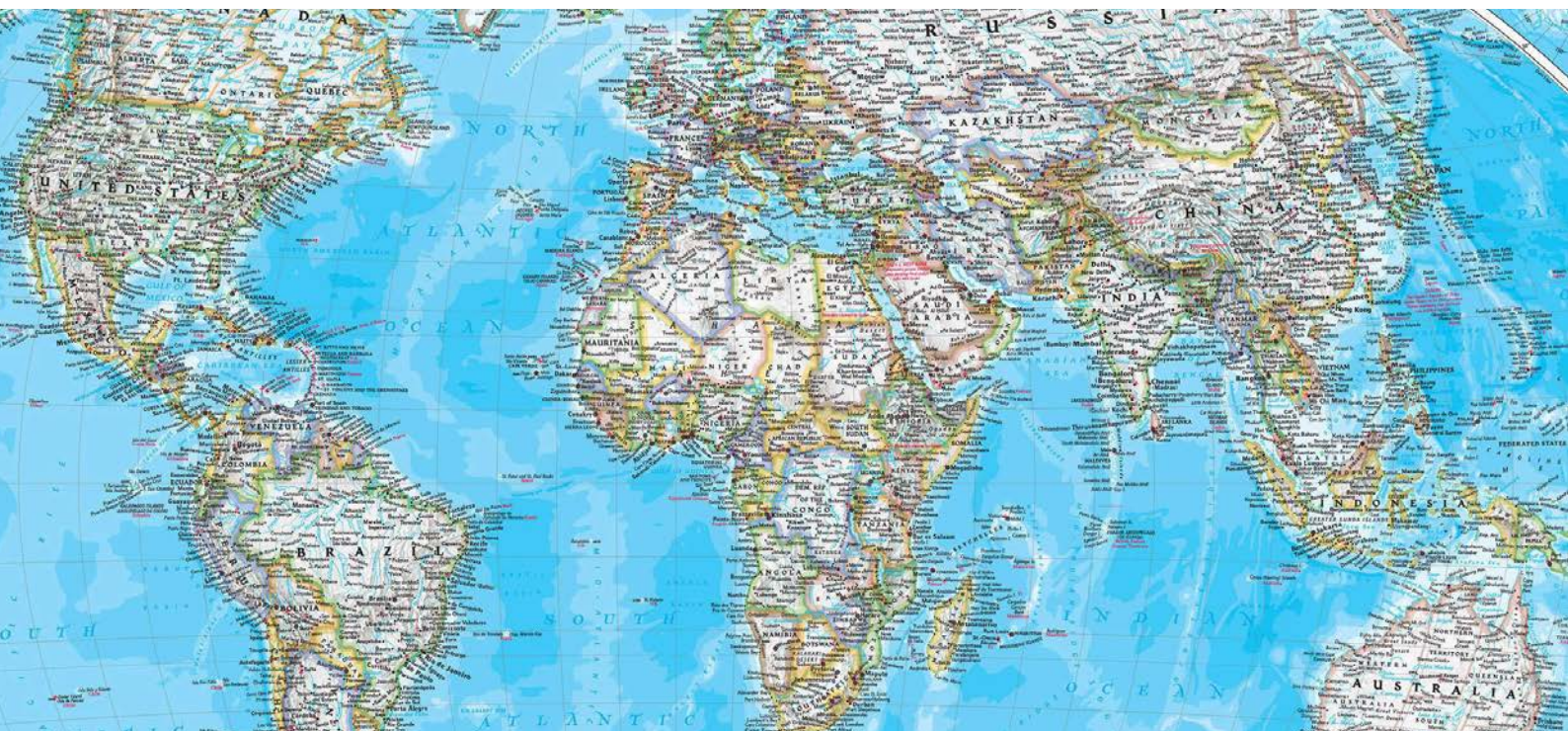


## Further Mathematics

Further Mathematics, although an A Level in its own right, is an extension of the Mathematics qualification and covers a range of more theoretical concepts. A Level Further Mathematics qualification will have linear assessment and all examinations will be taken at the end of the course. Further Mathematics is assessed by four written papers, Core Pure 1, Core Pure 2, Decision Mathematics and Further Mechanics.

Core Pure Mathematics covers topics including complex numbers, matrices, proof by induction, polar coordinates and hyperbolic functions. The Decision unit focuses on algorithms using graphs. This is considered an applied unit and covers material such as Dijkstra's algorithm, Kruskal's algorithm, Critical Path Analysis and the Route Inspection Problem.

Further Mechanics is also an applied unit and covers areas such as momentum, impulse, work, energy, power and collisions.



## Geography

This A Level course will enable students to be inspired by their geographical understanding, to engage critically with real world issues and places, and to apply their geographical knowledge, theory and skills to the world around them. Students will grow as independent thinkers and as informed and engaged citizens, who understand the role and importance of Geography as one of the key disciplines relevant to understanding the world's changing peoples, places and environments.

The specification content gives students the opportunity to develop an in-depth understanding of physical and human Geography through three externally assessed examinations. The physical element of the course, includes an in-depth understanding of the causes of tectonic hazards and how they can be managed, the changing coastal landscape and the key role that water plays in supporting life on earth. The human element of the course, is an in-depth understanding of our changing globalised world, superpower nations and human development.

All students must complete a minimum of four days of fieldwork. Fieldwork must be carried out in relation to processes in physical and human Geography. In the non-examination assessment component, worth 20% of their final grade, students are required to undertake an independent investigation that involves fieldwork and produce a written report.



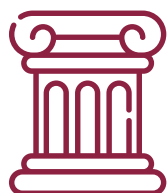


## German

The AQA A-level specification builds on your knowledge, understanding and skills gained at GCSE. It constitutes an integrated study with a focus on language, culture and society. Furthermore, it fosters a range of transferable skills including communication, critical thinking, research skills and creativity. Over the next two years, we will focus on how German-speaking society has been shaped socially and culturally and how it continues to change. In the first year, aspects of the social context are studied, together with aspects of the artistic life of German-speaking countries. In the second year, further aspects of the social background are covered, alongside the German political landscape, both in relation to Germany itself and its place in Europe. The past and its role in shaping the present is viewed through the reunification and its consequences while the focus on young people and politics looks forward to shaping the future of German-speaking countries. We also explore topics of vital interest such as immigration and racism.

We currently offer a two year course in German. Throughout the two years, students develop an awareness and understanding of contemporary society, cultural background and heritage of Germany. Students learn to listen, read as well as respond to a variety of spoken and written texts which include authentic materials. In class and with the German assistant, students are encouraged to use the German language accurately to express facts and ideas, and to present explanations, opinions and information in both speech and writing. Students are assessed by examination at the end of the Upper Sixth.



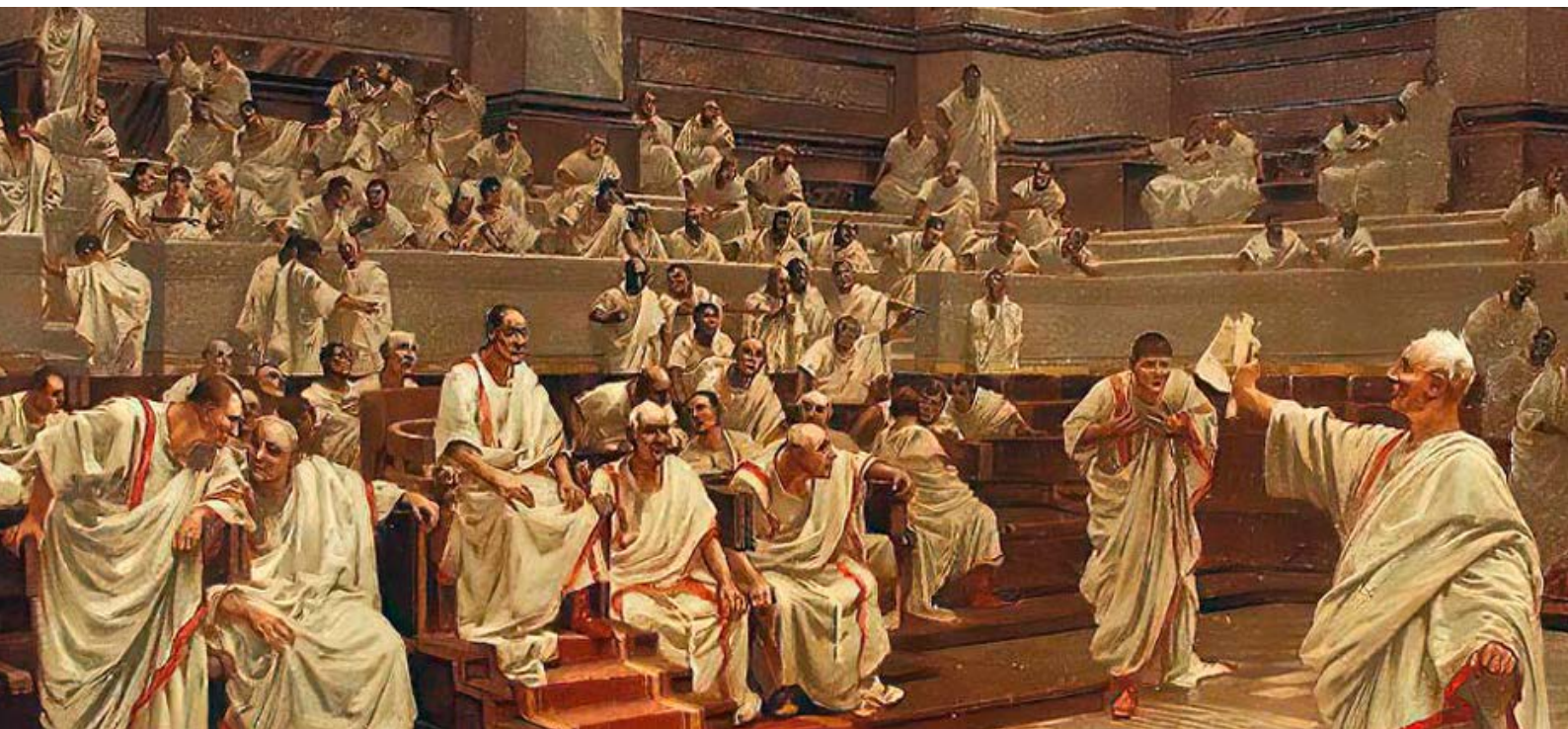


## History

History A Level explores four historical periods in depth. In the Lower Sixth we follow the theme 'Revolutions in Early Modern Europe' and study 'Britain, 1625-1701: conflict, revolution and settlement' exploring the turbulent period of British History which saw the execution of the monarch, a short-lived republic and the Glorious Revolution. We also examine Russia in revolution 1894-1924, a period which saw the end of Tsarist rule and the Bolshevik revolution.

In the Upper Sixth we explore the nature of the witch craze that took hold in the late sixteenth century in Europe and America, and the changing attitudes to magic and sorcery that eventually contributed to its decline. Students will study the social, economic, political and religious dimensions of the phenomenon and the broad intellectual changes that ushered in what is often called the Age of Reason. The coursework assignment investigates the controversial issue of popularity and efficiency in the Nazi Dictatorship. Students will examine and evaluate the work of three historians and develop the independent research skills that are crucial for university.

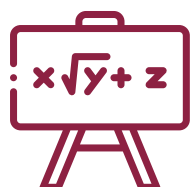
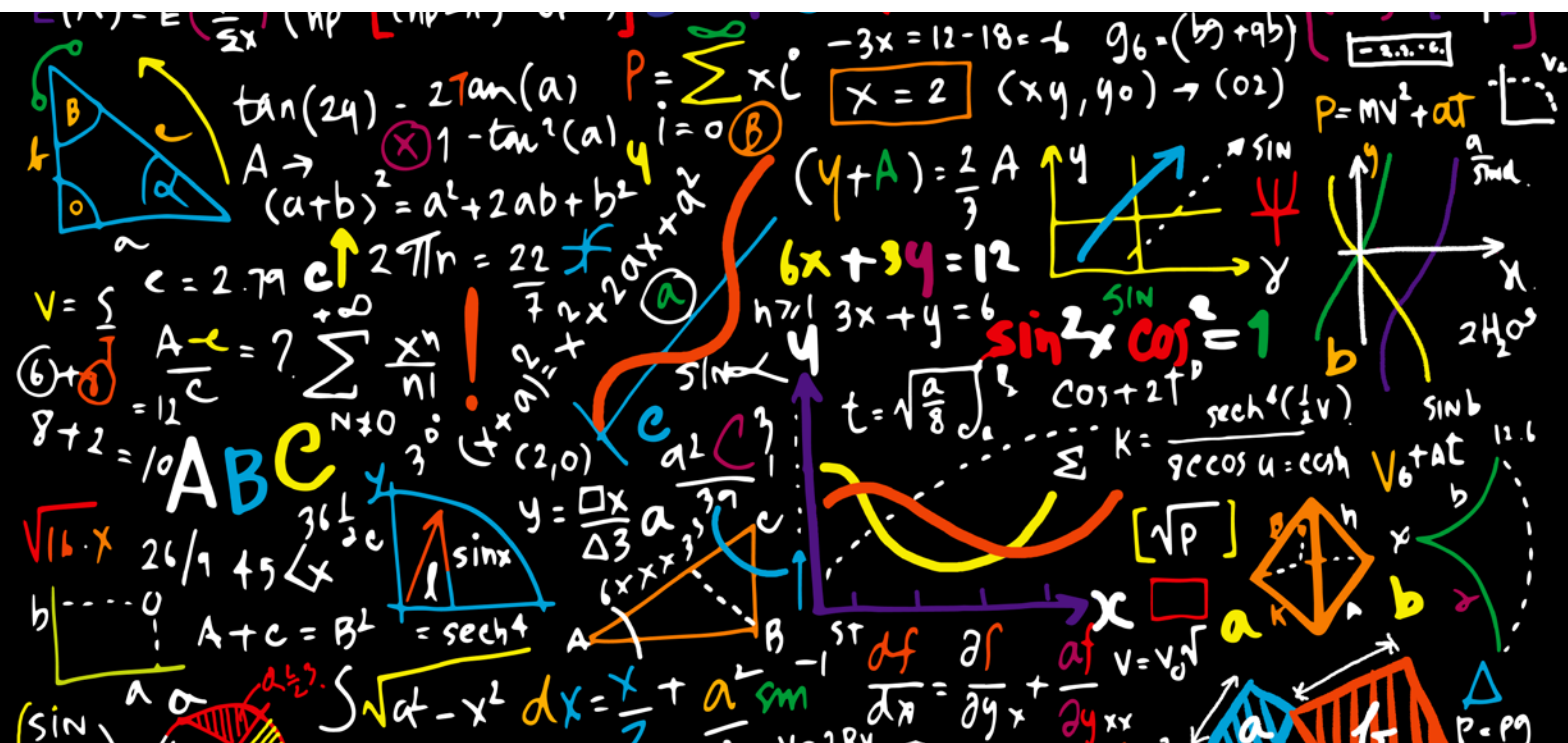




## Latin

A Level Latin is a highly rewarding and engaging course. Students will acquire the skills to access original Roman texts, both prose and verse, that have been important and influential for countless subsequent writers, while simultaneously developing an enthusiasm for the history and culture of the ancient Roman world. The course will allow students to demonstrate a vast range of skills such as problem-solving, language-learning, research, evaluation, personal response and literary analysis. It provides the opportunity for students to be inspired by reading widely across a range of set texts and develop linguistic skills which will help both in the study and application of English and other languages.

Students will firstly develop their existing linguistic and translation skills, building on the foundation established in GCSE Latin. They will also study four texts in-depth. They will read Cicero's speeches, studying how he made use of the language in his brilliant skills of persuasion and rhetoric, and Tacitus' histories, investigating how he was able to comment on the corruption and scandal of the Roman emperors. And in terms of poetry, students will study two tragic love stories rewritten by Roman authors: Virgil's tale of Dido and Aeneas from the Aeneid and Ovid's version of Medea falling in love with Jason from the Metamorphoses - both of these will give students a good understanding of the differences between Roman and modern ideas of love and desire.



## Mathematics

Mathematics, considered the gold standard of A Levels, is a highly academic and challenging A Level. It encourages students to develop their algebra and problem solving skills, covering the main areas of Mathematics both pure and applied.

The A Level qualification will have linear assessment and all examinations will be taken at the end of the course. Pure Mathematics is assessed by two written papers, P1 and P2 with applied content (Statistics and Mechanics) assessed by the third paper P3. Calculators are permitted in all exams. Pure Mathematics include topics such as coordinate geometry, calculus, vectors, trigonometry, logarithms and series.

The Statistics part of the applied course covers areas such as averages and spread, discrete random variables, correlation and regression, normal distribution and hypothesis testing. In Mechanics students study kinematics, dynamics and moments. All three examinations require students to demonstrate a high standard of algebra and problem solving, interpreting and evaluating data and constructing rigorous proofs.





## Music

A Level Music is a broad course where you will encounter music from all over the world, studying music from a range of different styles, cultures and eras. Townley Grammar offers a range of choirs and ensembles for you to join which will enhance your A Level Music experience, with the opportunity to start new groups to suit your musical interests.

A Level Music students are assessed through a combination of practical performance coursework, practical composition coursework and a listening and essay-writing examination. The AQA syllabus is followed. Practical performance coursework (worth 35% of the final grade) consists of a recorded performance of a minimum of ten minutes on any instrument, in any style. Practical composition coursework (25%) consists of two pieces, one written to a brief and the other a free composition; the total submission should be a minimum of 4.5 minutes. The final listening exam (40%) consists of listening and written questions using excerpts of music, following the study of a range of musical styles. Lessons necessarily require detailed study of music and scores, as well as listening to a broad range of musical styles.



## Physical Education

A Level Physical Education is a theoretical and practical subject combining areas of both scientific and physical knowledge alongside the practical elements of sport. Students will be equipped with a wide variety of transferable skills such as decision making and independent thinking, providing a strong base for them to move on to higher education, employment or further training.

Throughout the two years of study, students will investigate how physiological and psychological factors affect performance, and will gain a real understanding of the key socio-cultural issues that influence people's involvement in physical activity and sport. During the practical component of the course students will enjoy refining their ability to perform effectively in physical activity and sport by developing skills and techniques and selecting and using tactics, strategies and/or compositional ideas. The final component, is the assessment of practical performance and a written coursework that challenges learners to apply their newly developed theoretical knowledge to analyse and evaluate their own performance levels.

Physical Education will suit students who have a passion for sport and are already training and competing in sport at a high level. Students should study this subject if they find the theoretical aspects of the subject interesting and are driven to find out how they can improve physical performance; interested in how our bodies can be pushed to their physical peak; keen to understand what gives champions a psychological edge and intrigued by biomechanics.





## Philosophy and Ethics

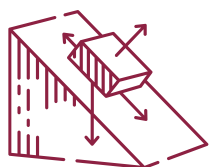
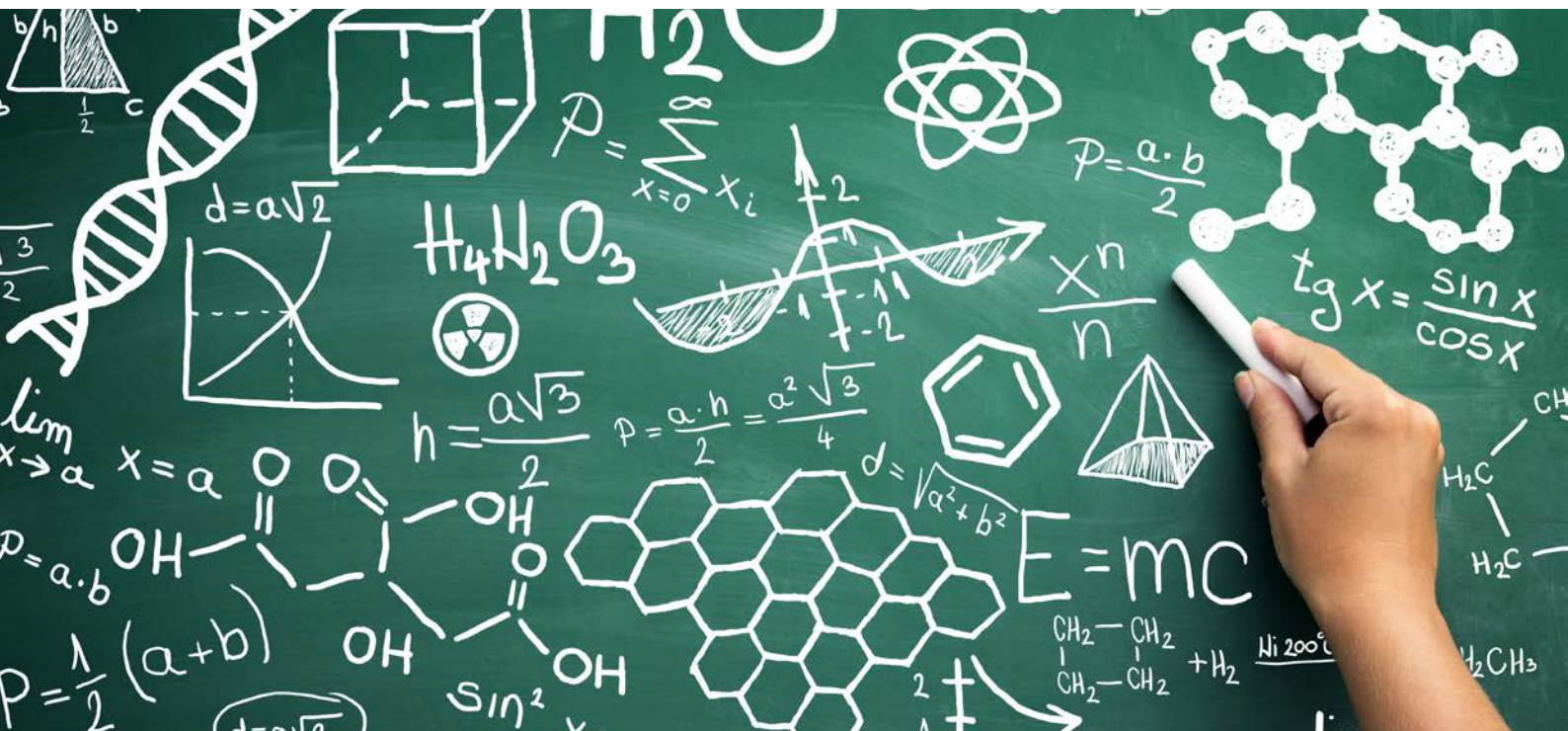
In the modern world where religion and politics often clash you will gain a further understanding of the basis of beliefs and develop skills which will enable you to analyse arguments, form reasoned conclusions and being able to justify them.

You will explore philosophical questions such as can God's existence be proved? Is atheism the logical 21st Century viewpoint? Does science answer all the questions? Explore ethical theories such as utilitarianism and situation ethics as well as applying them in medical ethics, business ethics and sexual ethics. Discuss whether medical intervention does more harm than good? Is religion inherently sexist? Or racist?

There is an in-depth study of Development in Christian Thought covering the modern effect of religions belief on the world including secularisation and feminist, black and liberation theology. Typical questions include Can God suffer? Will Christianity become extinct? Does religious belief cause more harm than good? Does the concept of a soul make sense in a scientific world-view? Should religions become involved in politics?

If you enjoy learning through group work, presentations, media and discussion and want to try to find answers to the big questions in life then this is the course for you.





## Physics

Physics is a demanding A-level requiring strong mathematical and laboratory skills as well as a deep conceptual understanding and problem-solving. Students extend their knowledge of energy, electricity, waves, forces and motion, atomic structure, magnetism and the particle model from GCSE.

New topics include sub-atomic particles, materials science, quantum physics, simple harmonic motion, kinetic theory, capacitance, fields, mass-energy equivalence, nuclear instability, astrophysics and medical physics.

As well as having to demonstrate a high level of numeracy, students are also assessed on their communication skills. There are three examination papers: two focus on the core A-level content and the third tests students' ability to unify concepts across all of the content. Experimental skills are also assessed across 12 core practicals.

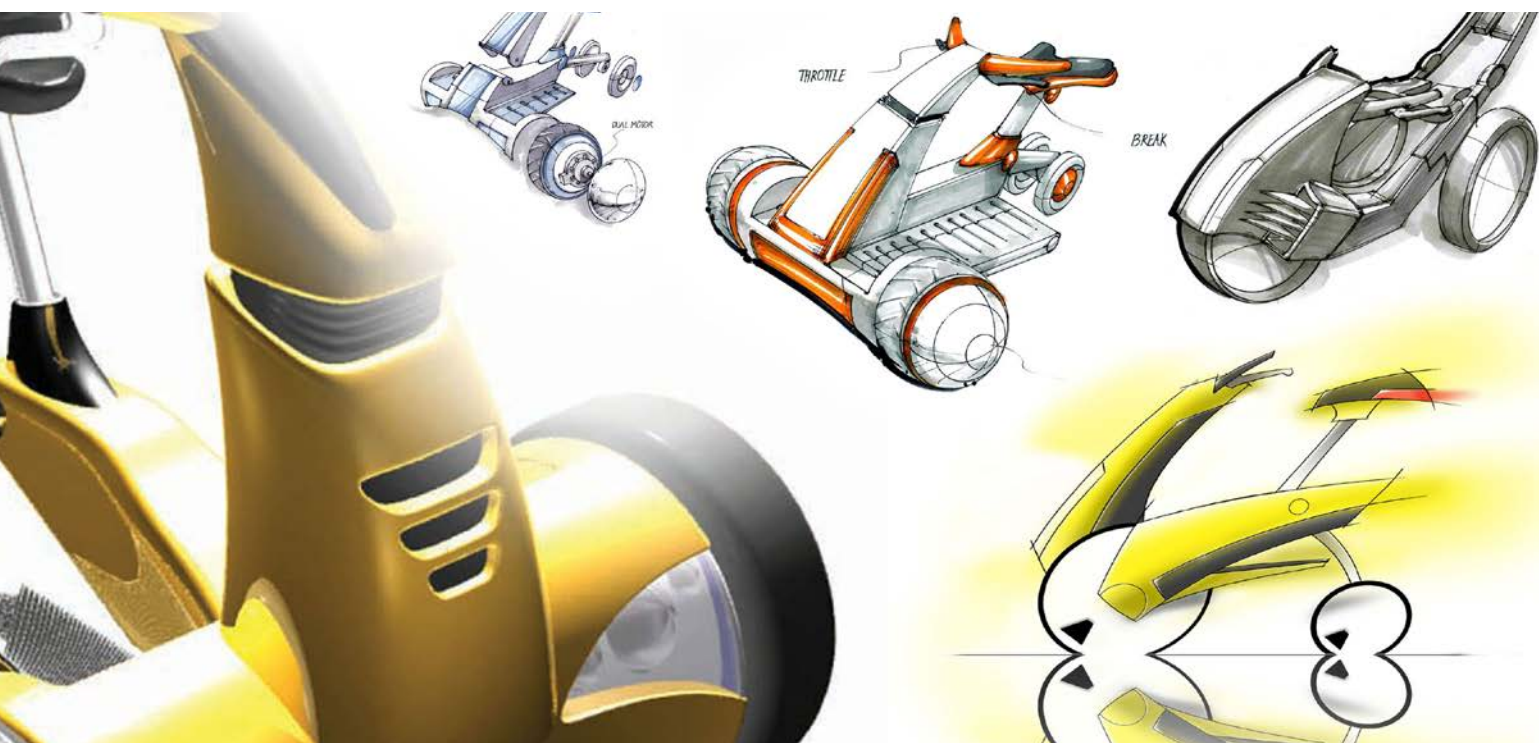


## Politics

The two year A Level Politics course covers both British and American politics along with a study of political philosophy. In year 12 students will complete the majority of the British politics work, including democracy, political parties, elections, voting behavior, Parliament, the constitution and the Prime Minister, along with a consideration of the relations between different institutions. Students will also study the compulsory philosophies - liberalism, socialism and conservatism.

Later in the course students will also study American politics and make direct comparisons between the political institutions and politics in the two countries. There will also be a study of Feminism as an ideology. The course is designed to engage students and all are encouraged to keep up to date with political events. The course involves theory, discussion, debate and question practice.





## Product Design

This creative and thought-provoking qualification gives students the practical skills, theoretical knowledge and confidence to succeed in a number of careers. They will investigate historical, social, cultural, environmental and economic influences on design and technology, whilst enjoying opportunities to put their learning in to practice by producing prototypes of their choice.

Students will gain a real understanding of what it means to be a designer, alongside the knowledge and skills sought by higher education and employers. It requires students to engage in both practical and theoretical study. This specification requires students to cover design and technology skills and knowledge, these have been separated into: technical principles and designing and making principles.

Students should develop the ability to draw on and apply a range of skills and knowledge from other subject areas such as Computer Science, Mathematics and Science to inform their decisions in design, make and the application or development of technology.





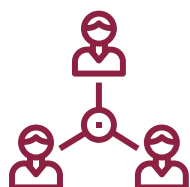
## Psychology

Psychology occupies a unique position between humanities and science. It connects well to social sciences in its examination of the nurturing forces that mould the individual, whilst also engaging in a robust examination of the biological mechanisms and processes that orient our being in - and experience of - the world.

Psychology - as a systemic examination of the human mind – is a relatively young discipline, tracing its roots to the mid-1800s. In this time, it has rapidly grown and evolved to incorporate more theoretical lenses, engage with a wider range of phenomena, and utilise technological advancements in its efforts. But at its core, its essence remains the revealing of the human psyche, uncovering what it means to be a self-conscious being that not only ‘thinks’ but thinks about its thoughts; not only ‘experiences’ but reflects on and narrativises experience.

Over the two-year course, students will be introduced to the major approaches that have shaped modern psychology and the interactions and tensions between them. Likewise, students will encounter a range of topics that showcase the range of psychology as a discipline and highlight the explanatory power of psychological theory for everyday experiences such as social influence, memory, and mental health.

Throughout these examinations, students will examine the various methods of research utilised in psychology, and grapple with some of the major debates that run through the discipline and our understanding of human experience at large, such as nature versus nurture and determinism versus free will.



## Sociology

Sociology aims to unleash every student's sociological imagination, or "the quality of mind essential to grasp the interplay of individual and society, of biography and history, of self and the world," (C. Wright Mills). From day one students are expected to engage critically with the structures and processes all around them that make social life possible. Scratching beneath the surface of taken-for-granted assumptions and developing the skills to analytically question social phenomena are at the core of this A Level.

The course explores the education system, asking difficult questions such as whether the current structure is fit for purpose for our economy, or whether all students in the UK have equal opportunities for success, regardless of gender, ethnicity or class. The social institution of the 'family' in the UK is also explored, along with global religious belief systems in the 21st Century. Finally, crime and deviance is studied, along with sociological theory and research methods. Students are also expected to demonstrate sociological curiosity and contemporary awareness by linking subject knowledge to current affairs in both formal assessments and class discussions.





## Spanish

We currently offer a two-year course in Spanish. Throughout the two years, students develop an awareness and understanding of contemporary society, cultural background and heritage of both Spain and other Spanish speaking countries. Students learn to listen, read and respond to a variety of spoken and written texts which include authentic materials. In class and with the Spanish assistant, students are encouraged to use the Spanish language accurately to express facts and ideas, and to present explanations, opinions and information in both speech and writing. Students are assessed by examination at the end of the Upper Sixth.





# The curriculum

Townley will offer 5 different programmes of study to students. This gives students a wide variety of options allowing them to make the correct choices depending on their interests.



Future career path as well as whether they want to specialise in a few subjects or a wider variety. Further Mathematics must be chosen as a fourth A Level only.

**A Levels** – two-year linear qualification

**EPQ – Extended Project Qualification** – Accredited qualification – 1 x 50-minute lesson a week

**Elective Course** – a range of one year accredited and non-accredited courses enriching your education – 1 x 50-minute lesson a week



2026 ENTRY  
A LEVEL SUBJECTS





TOWNLEY  
— EST 1937 —  
GRAMMAR SCHOOL

*From here it's possible*

2026

ENTRY

A LEVEL  
SUBJECTS



Email: [admin@townleygrammar.org.uk](mailto:admin@townleygrammar.org.uk)



Tel: 020 8304 8311



Website: [www.townleygrammar.org.uk](http://www.townleygrammar.org.uk)



Address: Townley Grammar School, Townley Rd, Bexleyheath DA6 7AB