

Blueprint for the future: Thinking like an Architect.



TOWNLEY
 EST 1937
 GRAMMAR SCHOOL

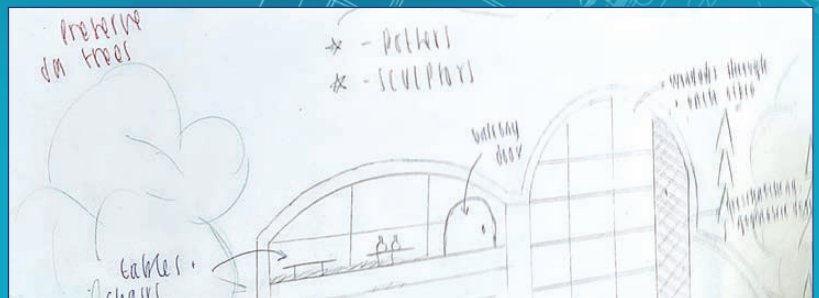
In early April, Year 10 Urban Classroom students took part in a career-focused architectural workshop delivered by Hawkins\Brown architects. The session was held as part of the RIBA (Royal Institute of British Architects) Ambassadors Schools Programme.

Hawkins\Brown led a design session aimed at introducing students to the profession. The workshop provided a hands-on look at the architectural process, including drawing, model making, designing to a brief, and verbal presentation. Students explored core concepts such as scale, form, function, material, and structure, using real-life buildings as inspiration.

To conclude the workshop, the student groups delivered impressive presentations detailing their design ideas and critical and creative thinking.

Ms A. Ona de la Blanca

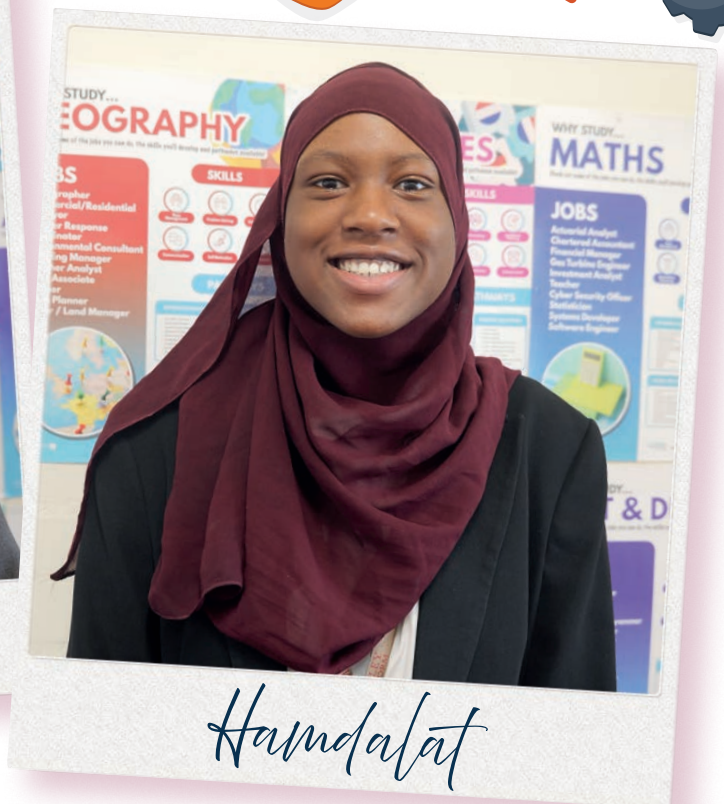
Head of Art and Urban Classroom Curriculum Lead



Townley's Future Engineers



Lathikka



Hamdalat

We're delighted to let you know that Lathikka D in Year 11 has successfully passed the Arkwright Engineering Scholarship selection process, a challenging application, assessment and interview. A fantastic achievement, congratulations to Lathikka! She is now confirmed as an 2026-2028 Arkwright Scholar, and is interested in pursuing a career as an Aeronautical Engineer. She joins Hamdalat A in Year 13 who was awarded the 2024-2026 scholarship and is off to university to study Chemical Engineering.

Applications for 2027-2029 scholarship will open in autumn 2026, see the link for more details.

More information about the scholarship:

<https://www.smallpeicetrust.org.uk/arkwright-engineering-scholarships/>

SCAN THE
QR CODE!



Spreading Joy:

The Townley Kindness Box!

At Townley, we believe that small acts of kindness can make a massive difference in our school community. To help celebrate these moments, we are delighted to highlight our Reception Kindness Box!

If a student has experienced a classmate or staff member being exceptionally kind, thoughtful, or helpful, they can easily say a proper "thank you." All they need to do is fill out a quick slip of paper detailing the act of kindness, write down who it's for, and pop it in the box. Students can sign their name proudly or choose to keep it completely anonymous.

The Best Part?

Our wonderful student Kindness Ambassadors regularly check the box and hand-deliver these secret thank-you notes directly to the recipients, bringing a well-deserved smile to their faces!

Why this matters:

- **Builds Empathy:** It encourages students to actively look for the good in others.
- **Encourages Gratitude:** It helps our young people pause and appreciate the support they receive daily.
- **Fosters Life Skills:** Kindness and empathy are invaluable life skills that support emotional development and strong friendships.

How you can help at home:

Ask your child this week if they've spotted any acts of kindness at school, or if they've posted a note in the box yet! Let's work together to keep the Townley spirit vibrant, supportive, and kind.

Mrs C Olszowka
Gallery Curator and Visual Display
Coordinator





Summer
Open Evening 5pm-8.30pm
Wednesday 24th June
Save the Date!

**Open Evening for Prospective Year 7 students
joining us in September 2027**

An opportunity for prospective students to visit the school and gather information about what we have to offer. Ticketed Event - further details and instructions on how to book your place are on our website:

<https://www.townleygrammar.org.uk/event-directory/open-events-2026/>

SCAN THE
QR CODE!





National School Attendance Award

2025/26 Spring Term



Townley Grammar School

Top 10% of all FFT Secondary Schools in England

Celebrating Excellence: A Huge Thank You to Our Community!

We are absolutely thrilled to share some wonderful news with you all. Townley Grammar School has officially been honored with an FFT National Attendance Award for the Spring Term of the 2025/26 academic year! This award is a prestigious recognition of the hard work and dedication shown by our entire school community. Being ranked among the top schools nationally for attendance is no small feat, and it truly reflects the culture of commitment we share.

To Our Students

Your enthusiasm for learning and your presence in the classroom every day are what make Townley such a vibrant place to be. This award belongs to you—thank you for showing up, engaging, and making every school day count.

To Our Parents and Carers

We know that "excellent attendance" doesn't happen by accident. It is the result of your constant encouragement, morning routines, and the value you

place on education. We are incredibly grateful for your partnership and the vital role you play in supporting your child's journey.

Why This Matters

Consistency:

High attendance correlates directly with academic success and personal well-being.

Resilience:

It demonstrates the strength of our school spirit.

Community: It proves what we can achieve when staff, students, and families work toward a common goal.

"Attendance is the foundation of all school success. This FFT award is a testament to the dedication of our staff and the unwavering support of our families." Congratulations to everyone on this fantastic achievement. Let's keep this momentum going as we move forward through the rest of the year!

Goodbye to Our International Students



To our wonderful international students Olimpia from Italy and Joao from Brazil, as your time at Townley Grammar School comes to a close this term, we want to express our deepest gratitude for the incredible energy, culture, and perspective you have brought to our community.

You stepped into a new environment with courage, embraced every challenge with grace, and enriched our classrooms and hallways. After 5 months with us, while we are sad to see you go, we are immensely proud of everything you have achieved during your time with us.

As you pack your bags and head off to your next great adventure, remember that you will always be a part of the Townley family. Safe travels, cherish the memories you've made here, and never stop shining brightly wherever you go in the world!

Mr J Quinn, Assistant Headteacher

Year 10 Student Ava Shortlisted as Young Reporter Semi-Finalist

We are extremely proud of Ava's shortlisting among the Year 10 Semi-Finalists as a part of the Young Reporter Scheme. This recognises Ava's incredible sourcing and writing of stories throughout the year, keeping to strict deadlines in order to have her work published to a huge audience.

Mr J. Mallinson, Curriculum Lead for English



Thank you to Bath, Birmingham, Leicester & Nottingham Universities for their informative Webinars this month in partnership with our Careers department to our Year 12 students
 - All now available on the Year 12 Student Hub.

INTERESTED IN DRAMA SCHOOL?

Come along to a workshop and Q+A with Miss Wood and Miss Williams!

**OPEN TO
 YEAR 9-12**

Thinking about a career in acting, directing, writing or stage management? Come along to our session!

← ◆ ◆ ◆ →

Come with an open mind and lots of questions!

1:10-1:40

In the Drama Studio

Friday 5th June

If you have any questions email us!
awood@townleygrammar.org.uk
gwilliams@townleygrammar.org.uk

Fourth Plinth Schools Awards



We are absolutely thrilled to announce that one of our very own talented students, Noa in year 8, has been named a winner in the prestigious Fourth Plinth Schools Awards 2026!

To celebrate her incredible achievement, she attended an awards ceremony at City Hall, where her artwork is currently on display. She was presented with her award and a fantastic bundle of art supplies by world-renowned author and illustrator Marion Deuchars, alongside London's Deputy Mayor for Culture and Creative Industries, Justine Simons OBE.

This year's competition was exceptionally fierce, with more than 1,800 entries submitted by young artists aged 5 to 15 from schools all across London.

The Fourth Plinth Schools Awards invites schoolchildren across the capital to design creative artwork inspired by the famous, rotating contemporary art commissions in Trafalgar Square. The highly anticipated annual competition gives young people a unique opportunity to get involved with major public art and offer their own fresh views of London. Please join us in giving Noa a massive congratulations for representing our school so brilliantly on the city-wide stage!

We cannot wait to see what she creates next.

Ms Imbert-Alverson and the Art Department



Success in Mathematics!



Congratulations to those students who took part in the recent Intermediate and Junior Maths Challenges. These are national competitions containing intriguing and challenging questions designed to encourage mathematical reasoning and to stimulate interest in maths. We were delighted that many students achieved certificates to reward their excellent performance: 16 Gold, 23 Silver, 22 Bronze.

Several students in the Intermediate Maths Challenge qualified for a follow-up round – the ‘Kangaroo’ – and we were very pleased to see both Swechha B. (9Per) and Millie E. (11Hes) obtain an additional Silver certificate.

We were also thrilled that Deetya T. (10Art) and Victoria T. (10Aph) qualified for the highly prestigious Olympiad, and both obtained Merit certificates in a very challenging test. Deetya’s success has been rewarded with an invitation to a National Maths Summer School organised by the UK Mathematics Trust. This is a tremendous achievement and we wish her an exciting time!

Five students have qualified for the Kangaroo following the Junior Maths Challenge. This will take place after half term and we wish them every success.

Townley’s top scorer in the Junior Maths Challenge, Cathy J. (7Her), has been invited to take part in a maths coaching scheme organised by the charity Axiom Maths. We are delighted for her, and hope this will help her to achieve even more success in the future!

Mr Clarridge, Teacher of Mathematics

DofE Bronze Practice walks last week of Term



This term year 10 Bronze DofE students have complete three 10k practice walks during the last week of term. Completing the Year 10 Bronze practice walk was honestly way more brutal than any of us expected. Completing the practice walk was such an amazing experience and honestly a lot of fun. Navigating through the beautiful Bexley countryside like Joyden's Wood and Foots Cray Meadows with my friends was brilliant, and it felt incredibly rewarding when our map-reading skills actually clicked and we found our checkpoints right on time.

We had a few funny moments when we had to double-check our bearings, but laughing it off and sharing snacks along the way just brought the team closer together. By the time we reached the final finish line, we were all buzzing with a massive sense of achievement and feeling genuinely excited to smash the qualifying expedition next.

Mr J Quinn, Assistant Headteacher



 THE DUKE OF
EDINBURGH'S AWARD

Japan 2026 Year 12 April



This April, 23 students were given the incredible opportunity to travel to Japan for 10 days. We experienced a truly unforgettable experience, learning about the beautiful culture and history of Japan. Initially, we arrived in Osaka after a full day of travel, where we spent the first four days. We visited many unique places in Osaka, such as Nara Park, where deer freely roam. Although they were very friendly, we quickly discovered how impatient they were when food was involved.

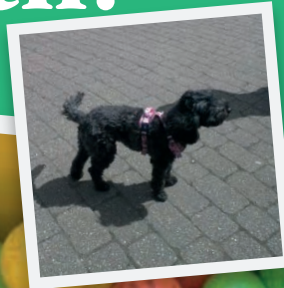
Another highlight of the trip, and one of my favourite days, was visiting Universal Studios Japan, where we spent a full day enjoying exciting rides and attractions with our friends. Alongside the modern attractions however, we also took time to visit many shrines and temples, such as the Fushimi Inari Shrine and the Kiyomizu Temple in Kyoto. After our time in Osaka, we travelled to Tokyo, where we spent the rest of the trip. We had the chance to visit so many famous landmarks that I've only seen through a screen. For example, we visited Mt Fuji and it was beyond anything I could've imagined. On the coach ride to Mt Fuji, everyone's mood was down because of the rainy weather, with the clouds covering the view we would've had of Mt Fuji. However, when we arrived, the clouds began to clear and we had the perfect view. Another place we visited was Shibuya Crossing, one of Tokyo's most recognisable sights, and it was just as busy as it looks in photos.

Overall, our experience in Japan was unlike any other. We were able to experience both sides of Japan, from peaceful temples and tea ceremonies, where we were educated on their traditions, but also the bright and busy side of shopping districts and Universal Studios. All of us made memories.

Mr J Quinn, Assistant Headteacher

Townley Turns Green for Mental Health!

Wear It Green Day
15.05.26



During Mental Health Awareness Week, which took place Monday 11th – Sunday 17th May 2026, our school community took an active stand for Wear It Green Day on Thursday 14th May. Students and staff wore a green accessory to show their support and help us "turn the world green" for good mental

health. It was a week dedicated to action.

Through various workshops, we explored how mindfulness can bring calm to our busy lives. Creative sessions sparked fresh ideas, while collaborative spaces encouraged honest communication. A huge thank

you to everyone who participated with such openness.

Let's keep these conversations going and continue to prioritise our mental health as we move to the end of the academic year.

Ms L Butler,
Assistant Headteacher

To contact the Safeguarding Team please email: safeguarding@townleygrammar.org.uk

If a child is in immediate danger you should always call 999.

Other services available are:

Kooth - Online counselling

<https://student.kooth.com/> or <https://student.kooth.com/urgent-support>

Samaritans - No judgement. No pressure. Here for anyone who needs someone.

116123 jo@samaritans.org www.samaritans.org

Childline - a free, private and confidential service where you can talk about anything.

08001111 www.childline.org.uk

Papyrus is a young person's suicide prevention charity. They provide urgent support through HopeLine 24/7

0300 102 2470 www.papyrus-uk.org Text: 88247 and Email: pat@papyrus-uk.org

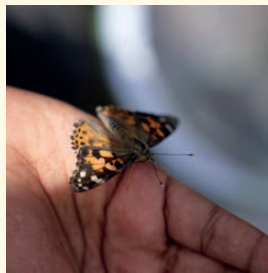
Further information is available on our school website:

<https://www.townleygrammar.org.uk/information/safeguarding/>

<https://www.townleygrammar.org.uk/our-school/pastoral/student-wellbeing/>

Wings of Wellness:

A Journey of Transformation in the Pastoral Hub



Over several weeks, a quiet and beautiful metamorphosis took place in the Townley Grammar School Pastoral Hub. Our team carefully nurtured a family of caterpillars, watching them grow and prepare for the next stage of their lives.

This project offered far more than just a fascinating look at nature; it provided a unique space to reflect on student well-

being. The journey from caterpillar to butterfly served as a powerful metaphor for personal growth and resilience. It gently reminded us that change takes time, that periods of quiet rest are necessary, and that transformation can lead to beautiful new beginnings. For many of our students, taking a few minutes to visit the hub and observe our tiny residents offered a calming, mindful pause - a chance to breathe and

find a moment of stillness amidst a busy school day.

We were thrilled when our butterflies fully emerged earlier this week! To celebrate this wonderful milestone, we invited students to join us for a special lunchtime release event, watching them take flight into their new beginnings.

Mrs Fitzgerald, Assistant Learning Manager Years 9 -11

Growing Together for Mental Health

Our Student Hub 'took action' this to raise awareness for Mental Health Week. They prepared posters inviting students from all year groups to plant seeds as part of the Wellbeing Gardening Group. Despite the weather, the group planted in excess of 40 seeds to support the Mental Health Awareness week strategy to 'Take Action':

- **Action: for yourself, for someone else, for all of us.**
- **Is nature the answer?**
- **How connecting with nature can support our mental health.**
- **Taking action for good mental health**



Whether it is noticing nature on your doorstep, spending time outdoors with others, or finding a quiet moment to listen and reflect, these actions can help build resilience, comfort and hope.

Nature is not a solution to every problem, but it can be a powerful and accessible support. This week, and beyond, let nature be part of how you look after your mental health.

We chose Action as this year's theme for Mental Health Awareness Week because, while awareness is vital, real change comes when we take action too. Together,

we've come a long way on mental health, but we can't risk going backwards.

Miss E Pritchard
Student Emotional Wellbeing Practitioner

During Mental Health Awareness Week, we are encouraging everyone to take action for good mental health by reconnecting with nature in ways that work for them.



Our Stress Bucket

Imagine your mind is a bucket. Every time you feel stressed—like having a bad day, worrying about money, or arguing with a friend—water pours in.

If water keeps pouring in, your bucket will overflow. When it overflows, you feel overwhelmed, panicked, or sick.

To stop the overflow, you need a tap at the bottom to let the water out. "Taps" are healthy ways to relax. Good taps include:

- **Talking to someone you trust**
- **Getting a good night's sleep**
- **Going for a walk**
- **Taking time to rest**

Check your bucket today. Is the water getting too high? Take a break, open a healthy tap, and let some stress drain away.



Athletics Teams Triumph Over Tough Competition (and Tougher Weather!)

Our Junior and Intermediate Athletics Squads competed in the English Schools Athletics Cup against many independent schools in the county, and they absolutely smashed it!

The event took place on Thursday 14th May, and to say the weather was a challenge is an understatement. The girls had to endure everything from bright sunshine to torrential rain and even a heavy bout of hail. Because the competition didn't stop, our girls didn't either—they just dug in and kept competing through it all. Both Townley girls' teams brought



their absolute best, racking up numerous podium finishes for their individual events alongside some truly outstanding results.

Beyond the brilliant individual performances, the students were an absolute credit to our school. They looked out for each other and cheered one another on through every single event, showing incredible team spirit. We are so incredibly proud of their achievements and their sheer resilience under pressure.

The Results

Their hard work and grit paid off massively in the overall standings:

Junior Team: 1st Place (Winners of the competition!)

Sienna B, Peggy O'L, Noa S, Tia-Rose B, Victoria G-S, Grace-Maria T, Oyinda A, Celeste R, Amrit S, Ciara H, Uzoamaka O, Shalom H and Sofia B.

Intermediate Team: 2nd Place

Faith A, Omo A, Mofi S-A, Adaora O, Emma P, Emil D, Rose O, Tobenna E, Chidimma A, Momore S-A, Alicja F, Sienna A, Darasimi O and Sofia D-R

Special thanks to Renee and Rebecca in Year 12 for supporting with team captaincy and officiating.

The PE Team

Bexley Senior Athletics Championships

Double Victory: Year 9 and 10 Athletics Teams Win Bexley Schools Championships



On Wednesday 20th May the Year 9 and Year 10 athletics teams competed at the Bexley Schools Athletics Championships at Erith Stadium. Both team finished first in their competitions and as always were a credit to themselves and our school community. All students competed to an exceptionally high level with many finishing in podium positions. These students will all progress on to the Kent Schools Championships next term.
Mrs Woodgate, PE department

Gold
 Faith - 100m
 Mofi - 200m
 Omo - 300m and Discus
 Adaora - 800m
 Tobenna - High Jump and Javelin

Mofi - Long Jump
 Darasimi - Shot put
 Sienna - High jump
 Amalia - Discus
 Tamar - Shot
 Year 9 relay team
 Year 10 relay team

Silver
 Momore - 200m
 Gretchin - 1500m
 Chidimma - Long Jump
Bronze
 Chidimma 100m
 Joesphine 800m



DofE Gold Practice walk in Exmoor



21 students embarked on an amazing trip to Exmoor for a 3 day trip of excitement and unforgettable memories! After our 7 hour journey on the minibus we touched down in Lynton where we began our trek. We walked our first 7km of the journey and the sights were incredible to witness. Being at such high altitudes cause you to experience all four seasons within one day yet we persevered and made it to the first campsite, where we took in the lovely scenery of the valley and prepared ourselves for the second day.

Day two of our Duke of Edinburgh practice expedition was easily the most challenging and rewarding part of the trip. After waking up early, we cooked our own breakfast on the Trangias before packing away our tents and dividing the group kit between us. With maps in hand, we set off on a 15km walk that tested both our navigation and teamwork. The toughest section was climbing a huge hill, followed by a long 5km stretch across the top before making the steep descent down to the coastline, where we stopped for lunch and a well-earned rest. After continuing along the route, we eventually reached our next campsite - a large open field where we once again set up our tents, organised our equipment, and cooked dinner for ourselves. By the end of the day everyone was exhausted, so after playing a few card games together, we settled into our sleeping bags and quickly fell asleep.

Day 3 started with us packing up our campsite before heading off for the final stretch of the expedition. The walk was difficult and tested our determination, especially due to our heavy backpacks, but reaching the end of the trip made it worthwhile. After taking in the beautiful landscape and enjoying a break, we began the journey back and headed home. Although it was challenging, completing the trip felt like an incredible achievement and we created amazing memories that will last for years to come!

Mr J Quinn, Assistant Headteacher

DofE Silver Qualifier year 11

Resilience on the Ridges: Year 11 Demonstrate True Grit for Silver DofE



Swapping their exam revision guides for compasses and heavy rucksacks, our Year 11 students successfully conquered the rolling heathlands and deceptive ridges of Ashdown Forest during their grueling three-day, two-night Silver Duke of Edinburgh's Award qualifier. Entirely self-sufficient, the teams expertly navigated steep valleys, dense woodland, and complex contour routes, that demanded serious map-reading and resilience.

Despite the physical toll of aching shoulders, damp gear, and the occasional navigational detour, the students demonstrated remarkable teamwork and good humor — whether sharing morale-boosting sweets up steep inclines or mastering the art of Trangia stove camp cooking. Ultimately, by pushing past their comfort zones and crossing the final finish line together, these students gained invaluable life skills like empathy, dynamic problem-solving, and mental toughness, proving themselves more than ready to tackle both their academic demands and whatever future challenges lie ahead.

Mr J Quinn, Assistant Headteacher

Wellbee Parent Survey 2026

We recently did a parent survey and would like to share some of the positive comments..

These are just a handful of the wonderful testimonials we received, all the staff appreciate your words and understand that we couldn't do all this without your support as well.

93% of parent/ carer's would recommend this school to another

I would highly recommend this school to all parents. No words can describe the excellency of the school.

Keep doing what you're doing! Delighted to be part of this fantastic school.

Very supportive teachers, rich curriculum and great opportunities for clubs and activities, thank you.

Townley Grammar School Bexleyheath is the best Grammar school I know that takes every issues with seriousness. My son is behaving well both in academics and character... thank you.

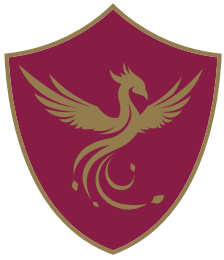
Our school has a great reputation in the London and the Kent suburban community and has achieved excellent results locally. We are delighted our children's personal development and career prospects in the future

My experience with teaching staff has been exemplary. They are personally invested and committed to helping my child get the best from her time at townley.

Excellent School

I will recommend Townley Grammar any time any day

I will recommend the school to my family and friends because they have helped my first daughter to achieve her life goal and my next daughter is also being looked after and supported greatly. **Thank you to all the staff**



TOWNLEY
EST 1937
GRAMMAR SCHOOL

Townley School Fund



Support Townley Grammar School

At Townley Grammar, we are proud to offer more than just an excellent academic education - we provide a vibrant and enriching school experience where students can grow, thrive, and feel truly inspired.

Many of the activities and opportunities that make Townley so special are not covered by standard funding. That's where the Townley School Fund comes in. With your support, we can continue offering the extras that bring learning to life and build a strong, supportive community.

Thanks to the School Fund, we can provide:

- ✓ **Better Resources** – from textbooks and classroom equipment to materials for practical subjects.
- ✓ **Celebrating Achievement** – awards and prizes for our incredible students at celebration events.
- ✓ **Inclusion & Support** – initiatives like peer mentoring and personalised student support.
- ✓ **Student Voice** – funding for projects led by our School Council.
- ✓ **Clubs & Co-Curriculars** – a wide range of enriching clubs and activities beyond the classroom.

These are the experiences that shape confident, well-rounded students - but they are only possible with your help.

How You Can Help:

We are asking families to contribute £10, £25, £50 or £100 this year. You can also choose to pay termly. Every donation - big or small - makes a real difference.

How to Donate:

Simply log in to your Arbor account, go to the Shop, and select School Fund to make your donation.

If you would like to give more, or support a specific area (like library books, celebration prizes or equipment), we would be delighted to hear from you.

Thank you for helping us keep Townley Grammar a place where every student can truly flourish.

<https://www.townleygrammar.org.uk/our-school/our-community/support-us/>