

## Data sheet

Art.No.: 92.232.5000.1

cable assembly GST18i3K1BS 15 50SW

gesis® CLASSIC connecting cable, female - male, number of poles 3, rated voltage 250 V, rated current 16 A, cable type H05VV-F, fire class Eca, total length 5 m, nominal cross section conductor 1.5 mm<sup>2</sup>, color of coding/ contact carrier black



Art.No.	92.232.5000.1
EAN	4015573359086
Order Unit	1

certificates / approvals



## Technical data

### general

rated current	16 A
rated voltage	250 V
rated impulse voltage	4 kV
pollution degree	2
mechanical coding	code 1
continuity resistor	58 mOhm
lockable	self-locking (unlocking by tool)
color of coding/ contact carrier	black
marking of poles	L, N, PE
color of housing inclusive strain relief	black

### model

nominal cross section conductor	1.5 mm <sup>2</sup>
degree of protection (IP)	IP40
cable type	H05VV-F
cable color	black
cable diameter max.	8.3 mm
version of cable	female - male
type of cord set	connecting cable
version cable end 1	GST18i3 female
version cable end 2	GST18i3 plug

### material

surface finish	tin-plated
halogen free	no
continuous temperature of cable	70 °C
insulation components continuous temperature	100 °C
fire load	2.063 kWh/St
fire class	Eca

#### dimensions

total length	5 m
--------------	-----

#### classification

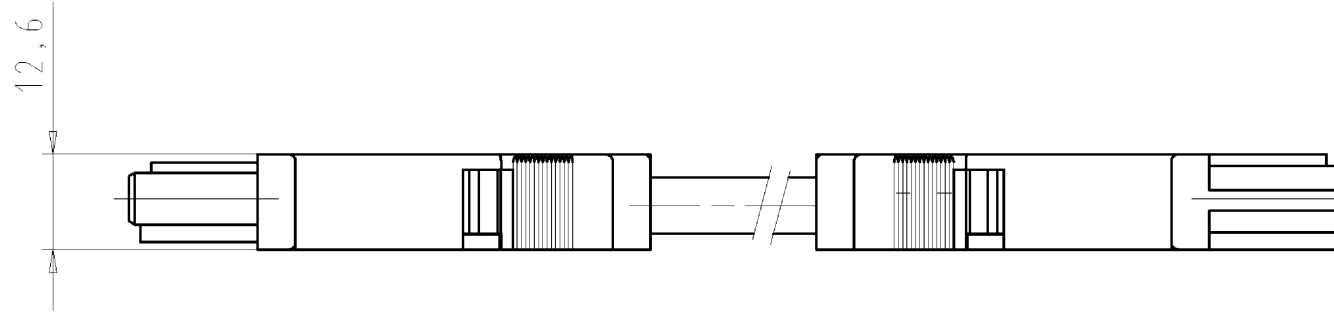
ECLASS 11	
ECLASS 8.1	27440604
ETIM 9.0	EC002587
ETIM 8.0	EC002587
ETIM 7.0	EC002587
ETIM 6.0	EC002587
ETIM 5.0	EC002587
ETIM 4.0	EC002587

#### product compliance

ROHS conformity status	compliant/exempted
ROHS exceptions	III-6(c)
REACH-SVHC conformity status	Duty-To-Declare
REACH-SVHC substances	Lead
REACH-SVHC CAS numbers	7439-92-1

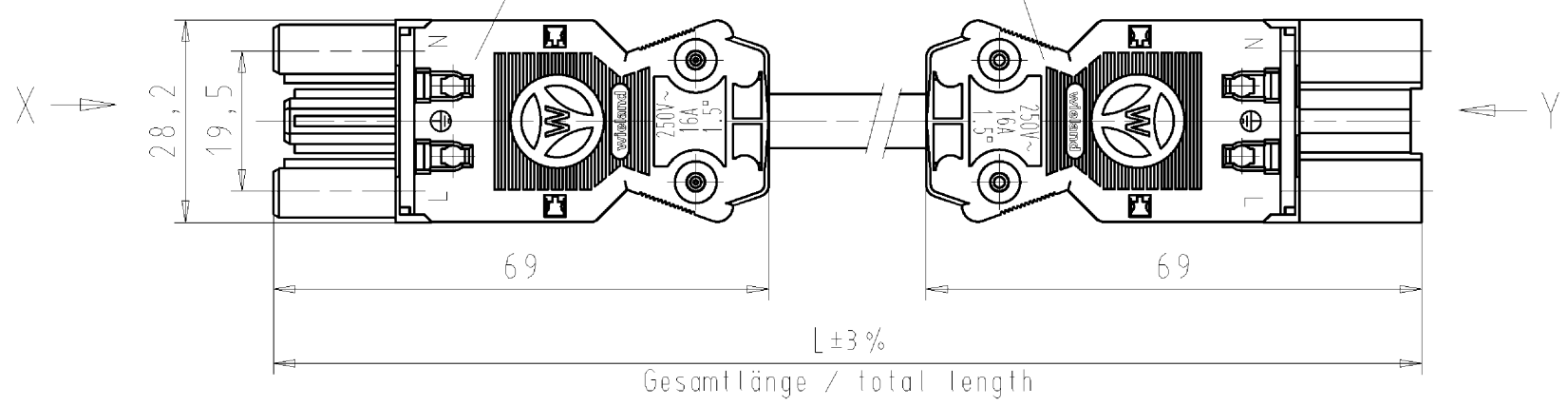
## Accessories

Art.No.:	Article/type description:	Description:
05.587.3156.0	lock (G)ST18 WS	Locking device for cable to cable connection GST18i3-5, white
06.561.7853.0	mounting frame GST18i3 SW	Mounting frame to snap in GST18i3 connectors into a housing or furniture. Wall thickness: 1,5-2,5 mm. Holds GST18i3 connectors with screw or spring connection and pre- assembled cables.
05.561.3653.0	cover cap GST18i3VS B WS	Cover piece for female GST18i3, white
05.561.3653.1	cover cap GST18i3VS B SW	Cover piece for female GST18i3, black
05.564.5353.0	cover cap GST18i3/4/5 SW	Cover piece 12 pole black for female parts GST18i3-6
05.564.5353.2	cover cap GST18i3/4/5 WS	Cover piece 12 pole white for female parts GST18i3-6
05.594.4250.0	cover cap ST18/3B + GST18i3 ST WS	
05.594.4253.0	cover cap ST18/3B + GST18i3 ST WS	
05.587.3156.1	lock (G)ST18 SW	Locking device for cable to cable connection GST18i3-5, black
06.560.0300.0	mounting part GST18i3 SW	Lock system to provide accidental disconnection of "flying donnections" and to fix these connections to cable ladders or cable trays. Reduction of shearing forces on the strain reliefs Colour: black



Buchsenteil/female connector

Steckerteil/male connector



Kabel/cable H05VV-F3G1,5  
Farbe/colour: siehe Tabelle/see table

.F	Farbe colour	Codierung "X" <small>Buchse female</small>	Codierung "Y" <small>Stecker male</small>	Kabelfarbe cable colour
.1	schwarz black			schwarz black
.2	weiß white			weiß white
.3	grau grey			schwarz black
.5	rot red			schwarz black

Typ/type: GST1813K1BS 15 .. SW = schwarz/black  
WS = weiß/white  
GR01 = grau/grey  
RT03 = rot/red

Weitere Daten siehe Katalog  
further data see catalog

Teile-Nr. part-no.	L	Beispiel (Farbe: schwarz) example (colour: black)	Typ type	
92.232.XX00.F	XX in dm-Schritten	92.232.1000.1 = 10dm/L= 1000mm	GST1813K1BS 15 10SW	
U2.232.XX00.F	XX in m-Schritten	U2.232.1200.1 = 12 m/L=12000mm	GST1813K1BS 15 X12SW	
92.232.XX90.F	XX in dm-Schritten	92.232.1090.1 = 10dm/L= 1000mm		
90.F = spezielle Verpackung und Etikettierung nach A 1960.000 special packaging and lable according to A 1960.000				
Tolerierung Size ISO 14405 (Tolerance system Size ISO 14405). (This ISO-standard describes the envelope principle. According to the envelope principle the deviations of form and parallelism are limited by the size tolerances).		ja/yes <input checked="" type="checkbox"/> Stoffverbots- und Deklarationsliste nach UU-TQM-05/03 ist einzuhalten. Conformity with Wieland document UU-TQM-05/03 (list of prohibited / declarable hazardous substances) to be declared!		
Freitoleranz nach - General tolerance		CAD - Zeichnung, keine manuellen Änderungen CAD - drawing, no manual modifications allowed	1.Verwendung: - First Use:	
		2006 gezeichnet drawn	Tag/Date 20.01.	
		Name Dütsch T.	T	
		geprüft checked		Zeichnung Nr./Drawing No. 92.232.0200.1 01K
		Normgepr. Stand. check		
		Maße in mm/Dimensions are in mm		
		Ersatz für/Replacement for: -		
		Type		
		Benennung/Title PRE-ASSEMBLED CABLE KONFEKT_LEITUNG		
		Buchse/female - Stecker/male 1,5qmm Crimpausführung/crimpverson K1 250V		
a 09.01.2013/ Index Datum / Blatt Date / Sheet		wieland Elektrische Verbindungen		
Änderung/Revision				