



GENESIS: THE FOUNDATION FOR EVERYTHING

FROM FALSE GODS TO FOLLOWING GOD

GENESIS 12:1-3



GENESIS: THE FOUNDATION FOR EVERYTHING

There were two pervasive ways in which humanity filled the void when they turned away from God and His ways after the flood:

1. By turning to each other (kings, kingdoms, societies)
2. By creating false religion (gods, goddesses, priests, temples)

The Bible tells us that the people of this day banded together around a shared system of religious belief aimed at expressing their pride in their autonomy and prowess as a people.

In Genesis 12:1-3, we see God's next step in the process of His grace giving hope to humanity.

God keeps His promise through four acts of His grace which:

- brought salvation to Abram and his household
- stand as God's acts of grace to bring all His elect people to salvation in Christ.

I. God's Gracious Initiative (Promise; Gen. 12:1)

“Now the Lord said...”

“...to Abram...”

II. God's Gracious Instruction (Preparation; Gen. 12:1)

"Go forth from..."

"...your country..." = language, culture, customs, false gods

"...your relatives..." = extended family and their false gods

"...your father's house..." = father's authority and his false gods

II. God's Gracious Instruction (Preparation; Gen. 12:1)

"country"

Haran/Ur were centers of worship of the Macedonian moon-god, Sin.



GÖBEKLI TEPE, AN ANCIENT TEMPLE SITE IN MODERN TURKEY.

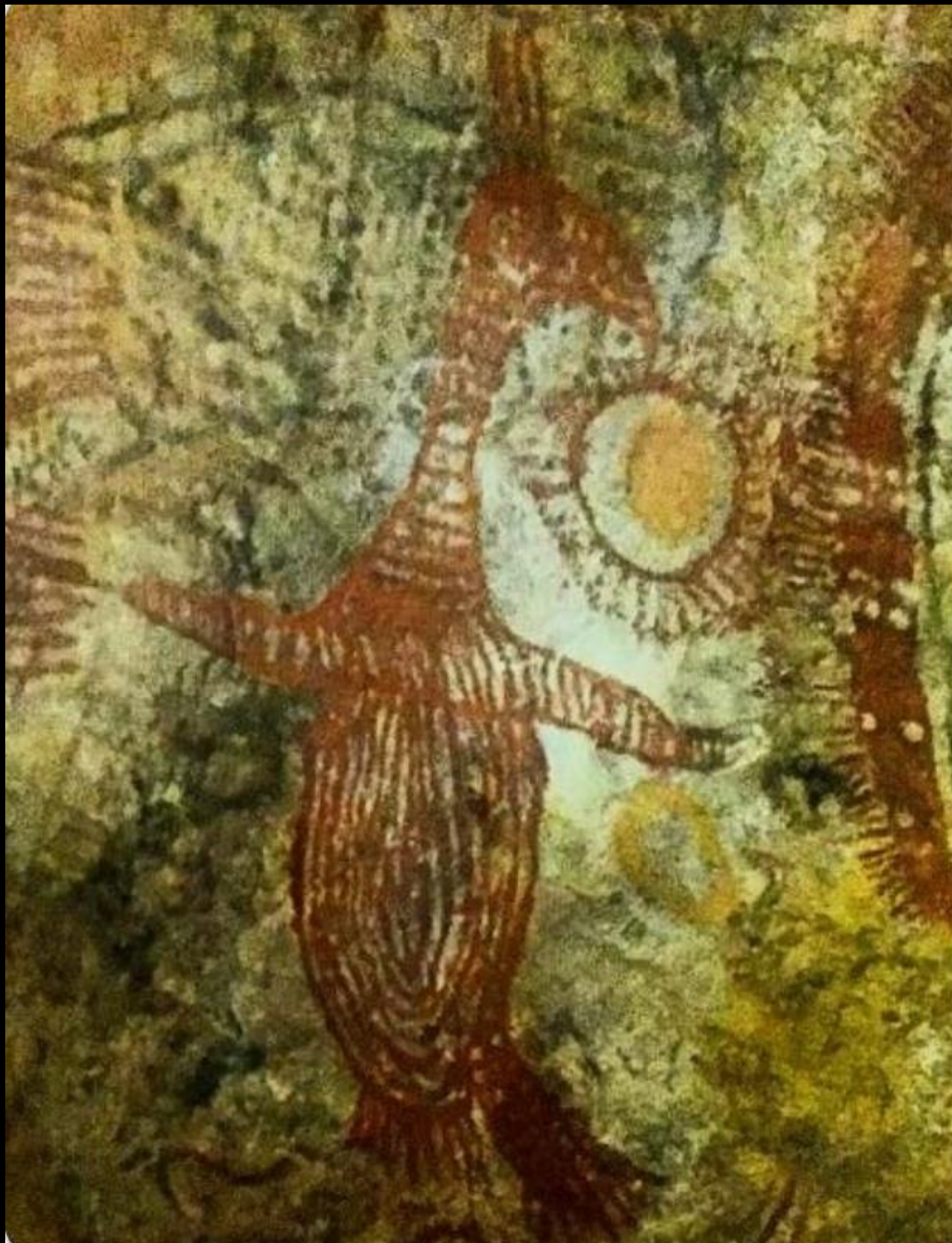
SOURCE: GREEKREPORTER.COM



SOURCE: @PREHISTORICMOJO ON X







II. God's Gracious Instruction (Preparation; Gen. 12:1)

*“Joshua said to all the people, ‘Thus says the Lord, the God of Israel, From ancient times your fathers lived beyond the River [Euphrates], namely, Terah, the father of Abraham and the father of Nahor, and they served other gods.”
(Josh 24:2)*

II. God's Gracious Instruction (Preparation; Gen. 12:1)

"relatives" and his *"father's house"*:

Terah can mean moon. Abram is to leave his father's authority to embrace and obey the true God.

Hebrew:

Sarah = princess

Milcah = queen

Chaldean:

Sarai = form of Sarratu,
the wife of the moon-god
(Sin)

Milcah = form of Malkatu,
daughter of the moon-god

II. God's Gracious Instruction (Preparation; Gen. 12:1)

“To the land which I will show you...”

II. God's Gracious Instruction (Preparation; Gen. 12:1)

"To the land which I will show you..."

What Abram did have was what God made clear to him.

Armed with God's clear truth, Abram was to go forward...

- repenting of his old life
- embracing his new life with God
- trusting in God for all his needs, and
- obeying God.

III. God's Gracious Investment (Preparation; Gen. 12:2)

"And I will make you..."

"And I will bless you..."

"I will make you a blessing."

Abram will be the father of the nation of Israel.

Abram = exalted father

Abraham = father of a multitude

III. God's Gracious Investment (Perpetuation; Gen. 12:2)

"I will" promises:

"Peace I leave with you; My peace I give to you; not as the world gives do I give to you. Do not let your hearts be troubled, nor let it be fearful.... These things I have spoken to you so that you may be kept from stumbling.... These things I have spoken to you, so that in Me you may have peace. In the world you have tribulation, but take courage; I have overcome the world."
(John 16:1, 33)

"And so you shall be a blessing."

IV. God's Gracious Insurance (Provision; Gen. 12:3)

“And I will bless those who bless you, and the one who curses you I will curse.”

Better rendered: ‘...and the one who treats you with contempt (dishonors you), I will curse.’

Previous curses:

- Genesis 3:14 with Satan
- Genesis 4:11 with Cain
- Genesis 9:25 with Canaan

IV. God's Gracious Insurance (Provision; Gen. 12:3)

“And in you all the families of the earth will be blessed.”

A person stands on a dark rock in the foreground, looking up at a vast night sky filled with stars and the Milky Way galaxy. The text "GRACE CHURCH" is written in large, white, serif capital letters, and "WILLIAMSBURG" is written in smaller, white, serif capital letters below it.

GRACE CHURCH

WILLIAMSBURG