



PLANTED *for* PURPOSE





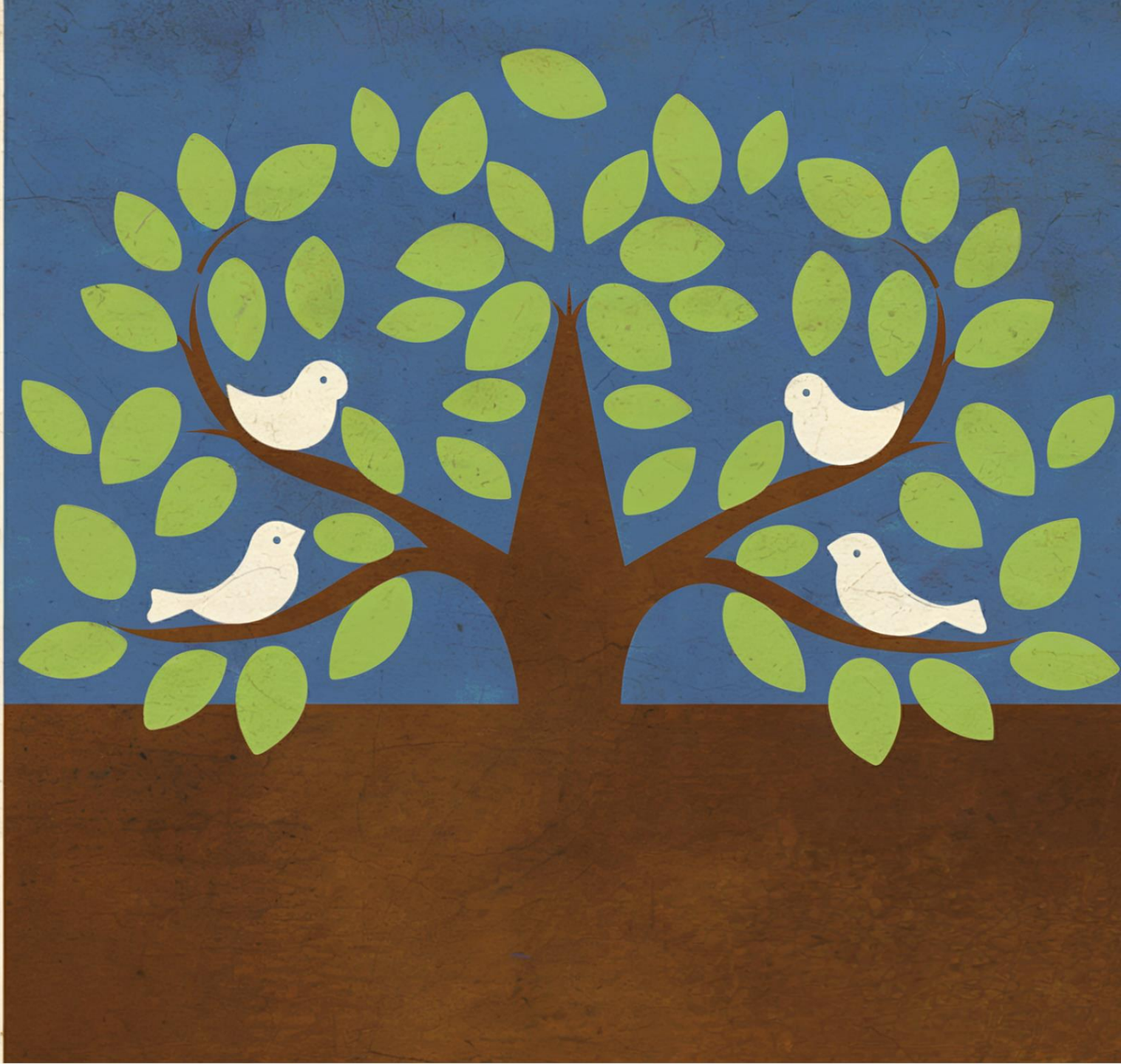
*SCRIPTURE READING:*  
**MATTHEW 13:31-32**





**PRAYER**







# **Key Symbols in the Parable:**

**The Sower = God**

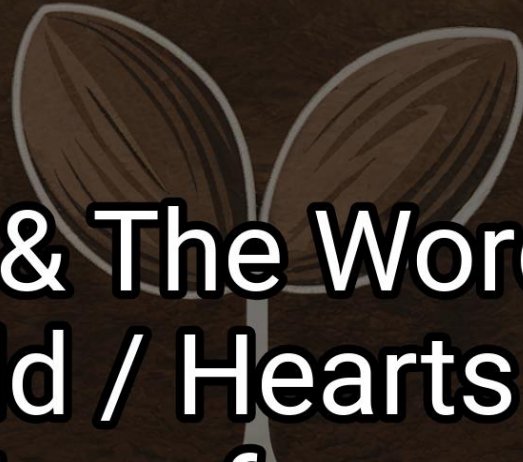
**The Seed = Jesus & The Word**

**The Garden = World / Hearts / Church**

**Growth to Tree = Transformation and Maturity**

**The Birds = People / Nations / Communities**

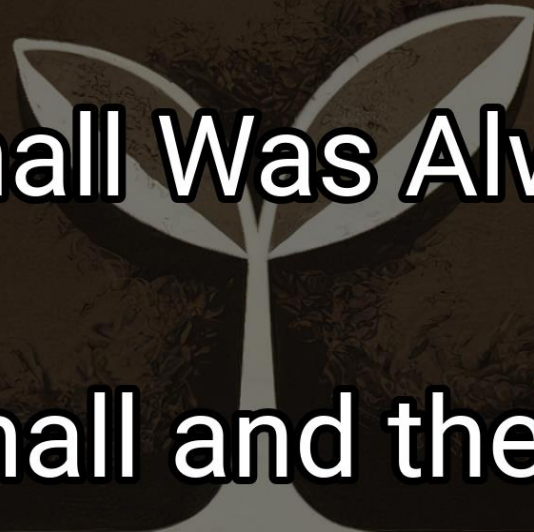
**The Branches = New Life / Fruit of Discipleship**





# **Interpretation: What can we learn (interpret) from these verses?**

- **What Started Small Was Always Meant to Expand**
- **God Uses the Small and the Unlikely for Extraordinary Purpose**
- **We Are Called to Plant, Grow, and Expand the Kingdom**





# **Application: How can I apply / live out these verses?**

- **Receive the Seed of the Word | Respond by Faith in Christ**
- **Grow in Christ and Continue in the Transformation Process**
- **Be a Sower of God's Word to Others**







**PRAYER**



BENEDICTION

